

Figure S1. Sodium dodecyl sulfate-PAGE gel images of different fractions obtained from the WPPC sample before and after calcium induced aggregation of proteins (50°C). Lane 1 = molecular weight marker (kDa); lane 2 = reconstituted WPPC before centrifugation; lanes 3 and 4= top and bottom layer of control sample (50°C, No Ca added) obtained after centrifugation; lanes 5 and 6= top and bottom layer (50°C, 8mM Ca) of sample after centrifugation; lanes 7 and 8= top and bottom layer (50°C, 30mM Ca) of sample after centrifugation. (A) Non-reducing (B) Reducing conditions.

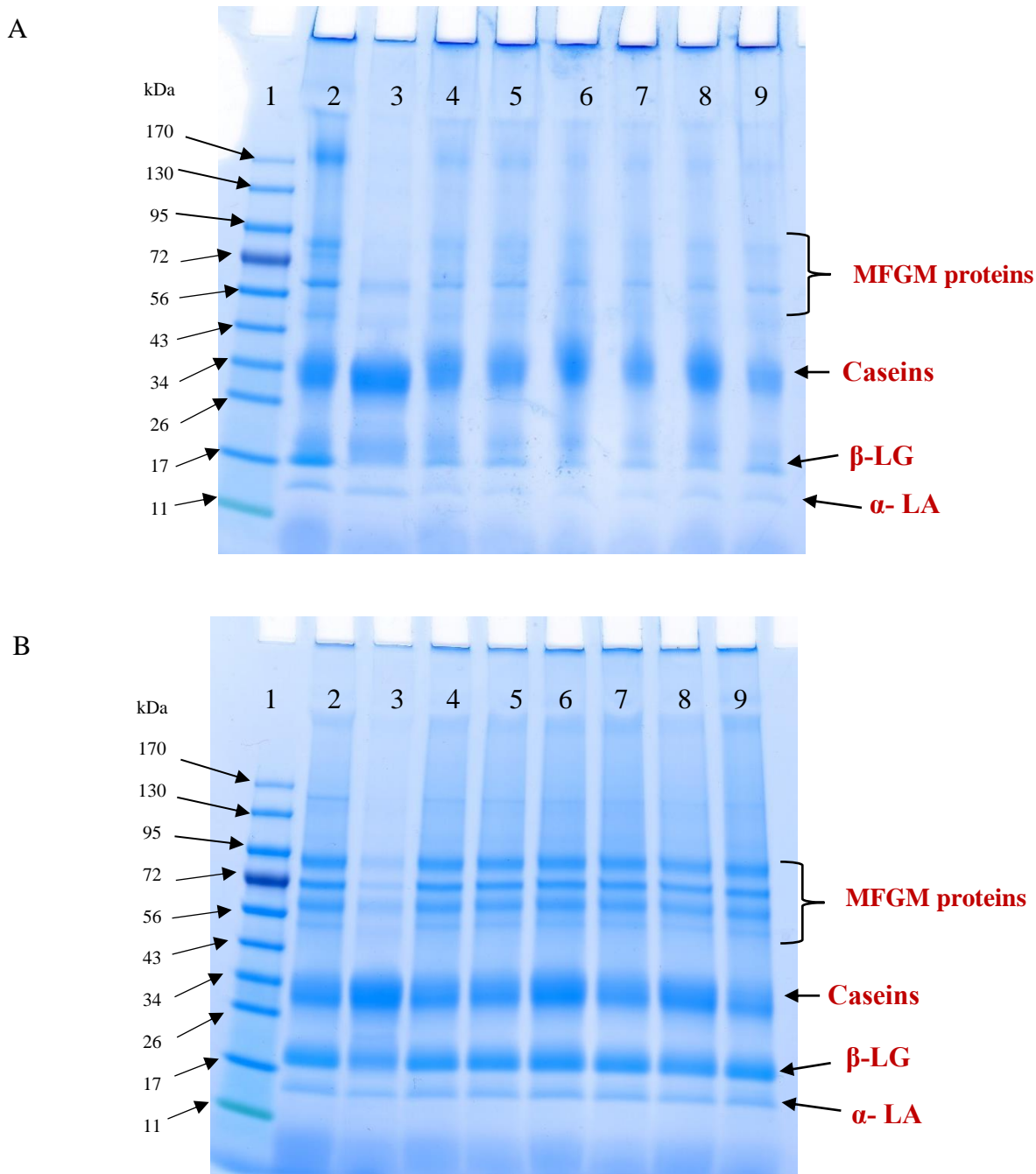


Figure S2. Sodium dodecyl sulfate-PAGE gel images of different fractions obtained from the WPPC sample before and after calcium induced aggregation of proteins (80°C). Lane 1 = molecular weight marker (kDa); lane 2 = reconstituted WPPC before centrifugation; lanes 3, 4 and 5 = top, middle, and bottom layer of control sample (80°C, No Ca added) obtained after centrifugation; lanes 6 and 7= top and bottom layer (80°C, 8mM Ca) of sample after centrifugation; lanes 8 and 9= top and bottom layer (80°C, 30mM Ca) of sample after centrifugation. (A) Non-reducing (B) Reducing conditions.