

INSIDE
THIS ISSUE:

Director's Message	1
December Grads	1
DPI Visit	1
Research Items	2
WWEC Conference	2
Closure of Professional Development Program	2
Widening the Circle: ACT 31	3
Board of Review Dates	3
Comp. Exam Dates	3
Praxis II Test Info	3
WI Research Seminar	3
Research Grants	3
GSO	4
Student WEA	4
Welcome Xiong Vang	4
UW-L in the News	5
ME-PD Office Staff	5

ME-PD On-Campus Newsletter

Initial-Certification

Early Childhood-Middle Childhood, Early Childhood-Adolescence,
Middle Childhood-Early Adolescence, Early Adolescence-Adolescence

SPRING 2009

FEBRUARY

Is It Spring Already?



Dr. Rhonda M. Rabbitt, EdD
Interim Director, ME-PD

"Be the change you wish to see in the world," Gandhi instructed.

Today Gandhi's words are even more powerful because we are amidst a time of political change, economic change, and university program change. During this change, we as individuals must strive to do our individual part so that collectively we move through the change into a stronger, better place.

I believe that life is mirrored at various levels of experience, so that while I quote from the recent inauguration speech, you can apply the meaning to your professional life, your graduate study, and your personal life:

Our challenges may be new. The instruments with which we meet them may be new. But those values upon which our success depends – hard work and honesty, courage and fair play, tolerance and curiosity, loyalty and patriotism – these things are old. These things are true. They have been the quiet force of progress throughout our history. The world has changed and we must change with it.
~President Obama

Be the change you wish to see in the world!

Rhonda

December Graduates

The ME-PD program congratulates its on-campus December 2008 graduates!

- Marie T. Kraska
- Kevin N. Paprocki
- Jennifer L. Wheeler

Spring Commencement Scheduled for Saturday May 16th



DPI Visit to the School of Education

Last fall the School of Education (SOE) had its accreditation visit from the Department of Public Instruction (DPI). DPI reviews each program in order to ensure standards are met for accreditation.

While DPI commended various departments, recommendations were given specific to DES to improve assessment of candidate proficiency. These include:

- Clearly delineated and defined measurement criteria.
- Align field experience assessment forms with Wisconsin Teacher Standards.
- Follow-up evaluations with graduates of the program, assessing how well the program prepared them for work in the profession.
- Portfolio requirements and guidelines that measure proficiency in pedagogical knowledge and teaching practice over time.
- Guidelines that clearly identify when portfolios are

to be submitted and assessed to demonstrate multiple measures over time in candidate proficiency.

The School of Education anticipates continued work to ensure its programs conform to DPI requirements in the formation of professional, globally-responsive teachers.



School of Education Conceptual Framework

Peer Tutoring Opportunities

- Are you a multicultural student?
- Do you find yourself in need of extra support in any of your classes?
- Are you aware that peer tutors are available specifically to support the success of multicultural students?

Please contact Multicultural Student Services at (608) 785-8228

Research Items

- **Grant Writing Workshops** are held each semester to learn what it takes to write a successful grant proposal, connect with faculty mentors, and learn from past recipients.
- **RSEL Grant:** Are you interested in grant money for your research? Turn in applications to the Grad Studies Office by **February 20**.
- **Annual Celebration of Student Research** at UW-L on **Friday, April 3, 2009**.
- **The 23rd National Conference on Undergraduate Research (NCUR)** will be held in **La Crosse on April 16-18**. If you are interested in attending or would like to help out during the weekend, please visit www.uwlax.edu/ncur2009/index.html

Closure of the Professional Development Program

The College of Liberal Studies, with the support of the Provost and the School of Education, has decided to close the ME-PD Professional Development (Non-Certification) Program. Further admissions to the program have been frozen while the program is being officially closed. In a letter, CLS Dean Ruth Anne Benson explained that "The intent of the closure is to strengthen the graduate programs in Special Education, ME-PD Initial Certification, and ME-PD Learning Community Programs. The program is being closed due to lack of defined areas of concentration, low enrollment, and lack of course options resulting in students unable to progress in a timely manner."

Faculty and administration are committed to working with students currently enrolled in the program to ensure completion of the degree program. Current non-certification students should work closely with the ME-PD office on a plan of study for completion of the program. If you have any questions or concerns, please contact the ME-PD office.

103rd Annual Western Wisconsin Education Conference February 20, La Crosse Center

"E=MC²:The Theory of Imagination"

Keynote Speakers:

- Katalina Groh "Leadership—An Art of Possibility Creating a Culture of Innovation and Creativity"
- Dave Skogen "Winning at Retail"

In addition, there will be three breakout periods covering a variety of topics in education, some of which will be lead by faculty and students affiliated with the ME-PD program.

For more information visit the website at: www.wweconference.com

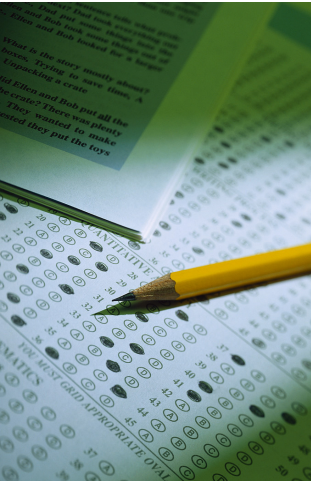
The School of Education at UW-La Crosse strives to become a leader in the preparation of globally responsive teachers through a University-wide commitment to teacher education.

Board of Review Information & Dates

Avoid having a **hold** placed on your registration! If you have, or are in the process of completing, **nine credits** of graduate study, you **must** submit a program of study proposal to the Board of Review (BoR). The BoR is an essential component of the ME-PD program, designed as a tool to guide students through their course of study and results in a record of the program of study. Failure to complete the BoR at the appropriate time **will** result in a hold put on registration.

BoR Dates Spring 2009

- **February 13:** Final BoR documents due to the ME-PD office
- **February 26:** BoR Meeting 3-6:30pm, by appointment, in 277 Morris



Widening the Circle: ACT 31

April 3 & 4, UW-La Crosse

“Helping Teachers to Teach about Wisconsin Indians’ and Hmong History and Culture, Authentic Materials, and Infuse Curriculum”

The La Crosse Native American Student Association (NASA) in conjunction with the WI Department of Public Instruction is holding a symposium Friday and Saturday at the University of Wisconsin La Crosse. The symposium is open to PK-12 educators, post secondary educators, administrators, students in all areas of study, and other interested parties.

Registration is free to UW-L students, but you **must** register. For more information please visit the website at:
www.uwlax.edu/native

Comprehensive Exam Information & Dates

The ME-PD comprehensive exam is one of three culminating project options for ME-PD students. If you are considering this option, or would like more information, please contact the ME-PD office or check the website at:

<http://www.uwlax.edu/MEPD/ic/CurrentStudents/ComprehensiveExam.html>

Comprehensive Exam Dates 2009

- **Feb. 26:** Application materials due
- **March 7:** Exam, 8:00am-12:30pm, Murphy 150
- **April 16:** Information Meeting, 6:30pm Morris 277
- **April 30:** Application materials due
- **May 30:** Exam, 8:00am-12:30pm, Murphy 150

Praxis II: Subject Assessment Tests

UW-L requires all students to pass the Praxis II **before beginning their student teaching**. Please check the Educational Testing Service’s website www.ets.org/praxis for information, including test lists, registration information, etc. When taking the test, do not forget to **designate UW-L** as your score recipient. Below are the upcoming test dates. Register early as there is limited space.

Upcoming Praxis II Test Dates & Locations

- **March 14:** Central High School
- **April 25:** UW-L



Wisconsin Research Seminar on Improving Educator Quality June 29-30 at Chula Vista Resort, Wisconsin Dells

The Wisconsin Research Seminar on Improving Educator Quality will feature presentations of studies, evaluations, and ongoing projects aimed at improving the quality of teaching, student services, and leadership in Wisconsin schools.

For more information please visit:
www.learningpt.org/greatlakeswest/witq/research2009.php

Get Involved with GSO

The Graduate Student Organization (GSO) sponsors an annual orientation for new graduate students at UW-L. It is also dedicated to improving the visibility of graduate students on campus and providing professional and social networking opportunities via travel grants, seminars, and other activities. Contact GSO at: gso@uwlax.edu or visit their Facebook page!

Important Dates to Remember

2/10 Grant Writing Workshop

2/20 Last day to submit RSEL proposals

3/2 Last day to submit abstracts for UW-L Celebration of Student Research and Creativity

TBD Poster Making Workshop

3/13 Last day to submit application for UW-L Celebration poster funding

3/13 Last day to submit applications for professional travel funds

4/3 UW-L Celebration of Student Research and Creativity

5/1 Graduate Final Report submissions due

5/15 Last day to submit applications for professional travel funds

Graduate Studies Seeks Your Voice!

The Office of Graduate Studies would like to better know who you are, and would appreciate your feedback on your graduate program experience here at UW-L. Graduate Programs, whether on campus, on-line or through learning communities are vital to the university and the community. Students' opinions are extremely important. With your help, we can improve our graduate studies programs for future generations.

Should you have any questions please feel free to contact the GSO office.

To take the survey, please go to:

<https://secure.uwlax.edu/stusurveys/TakeSurvey.aspx?SurveyID=n402662>

Student Wisconsin Education Association (WEA)

Student WEA is a pre-professional organization of college students pursuing careers as educators. Student WEA provides an additional perspective on topics in public education such as contracts, salary, PI34, and other educational issues. Membership in Student WEA provides opportunities to attend development conferences.

For more information visit the UW-L Student WEA website at:

www.uwlax.edu/studentwea/

Welcome Xiong Vang!

The ME-PD program welcomes Mr. Xiong Vang to the School of Education as a recruiter/advisor. His work is focusing on recruitment and retention of students of color and disadvantaged students. He earned his Bachelor of Science and Master of Science degrees in Physical Education from the UW-La Crosse.

Being a graduate from UW-L, he can speak from his personal experiences when talking to candidates about opportunities and support already in place to help students succeed. He brings a strong work ethic, a personal experience with teacher education, and a wealth of ideas to recruit and support students in teacher education.

Visit him in 320 Morris Hall!



In the News

UW-L listed among nation's 'Top Peace Corps' campuses

UW-L has earned a ranking in the top 25 medium colleges and universities on the annual list of 'Peace Corp Top Colleges and Universities.' UW-L ranks no. 24, with 19 undergraduate alumni and 2 graduate alumni working serving around the world as Peace Corp Volunteers.

The news was delivered in a letter from Ron Tschetter, director of the Peace Corps in Washington, noting that "With the knowledge and training acquired at the University of Wisconsin-La Crosse, these volunteers are making a positive contribution to the lives of people in 76 countries."

Since its inception in 1961, the Peace Corps has received volunteers from over 3,000 institutions across the U.S. and Puerto Rico. To learn more about the Peace Corps, visit www.peacecorps.gov.

Administrative Changes in DES and the School of Education

As of January 1st, 2009, CLS Interim Dean Ruthann Benson has taken on the additional role of Chair of the Department of Education Studies. Peg Finders remains as Director of the School of Education until June 30, 2009, at which time she will return to a role as full professor in the English Department.

Is a Master's Degree Transformative?

Research conducted with our Learning Community Program participants has shown the transformative potential in obtaining a master's degree. Findings were shared on November 8th in Chicago and will be published in an upcoming issue of *Ubiquitous Learning: An International Journal* in an article by Rhonda Rabbitt, Hal Hiebert, and Pat Markos.

ME-PD Office Staff & Fall Schedules

Margie Hylkema Dr. Patricia Markos

Assistant to the ME-PD
Director

271 Morris Hall
(608) 785-5409
8:00-4:30 Mon-Fri

Margie works directly with ME-PD Learning Community director regarding any academic LC issues.

Research & Writing
Specialist

268 Morris Hall
(608) 785-5087
8:00-4:30 Mon-Fri

Pat is currently conducting program evaluation, and research for the ME-PD Learning Community.

Janet Craig

ME-PD Program Associate
268 Morris Hall
(608) 785-8142
8:00-12:00 Mon-Fri

Janet is currently assisting in the ME-PD office primarily supporting the on-campus programs.



Scott Swedeen

ME-PD Graduate Assistant
270 Morris Hall
(608) 785-8673
Monday, Wednesday, Thursday

Scott is currently an ME-PD student, working towards licensure in middle-childhood to early adolescence. He assists the ME-PD staff.

