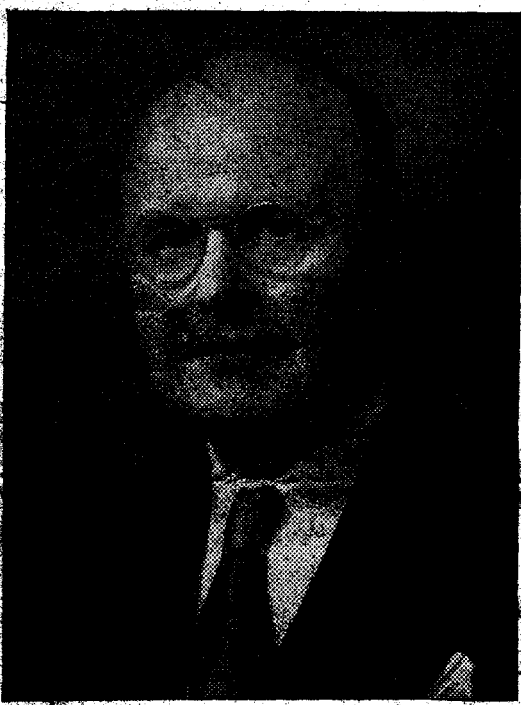


81-05

50-18

We Salute th

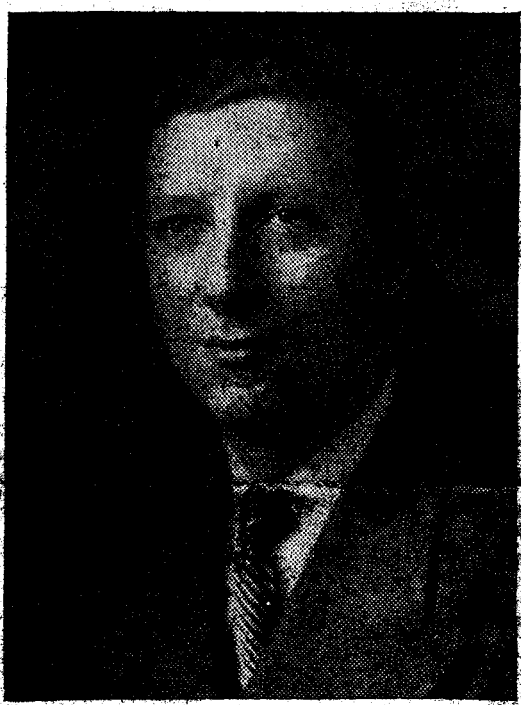


LAWRENCE DELOS MILES

Division Manager
Purchasing Department

"In recognition of his outstanding accomplishment through the establishment, organization, and development of a value analysis program which has resulted in substantial cost reductions."

1950



JOSEPH GREGOR NEULAND

Section Engineer

General Engineering and Consulting Laboratory

"For his excellent work in developing the General Electric mass spectrometer into a convenient, sensitive and accurate instrument of wide usefulness."



ROLLIN HOSMER

Section Engineer

General Engineering and Consulting

"In recognition of his outstanding work in the field of aerodynamics and his competent direction of Project..."

At 11:00 a.m. today, the General Electric Company presented its highest honor, The Coffin Award, to twelve of your friends and neighbors.

Their pictures are featured on this page . . .

Their names and their achievements will go down in the annals of the Company together with the names and accomplishments of the thirty-five other Coffin Award winners being similarly honored today in General Electric locations outside of Schenectady.

The winning of this award is, in itself, an outstanding achievement. How outstanding, becomes apparent when you realize that the forty-seven winners—twelve from Schenectady—had as their competition the whole General Electric family, now 170,000 strong.

The Coffin Award is given in memory of Charles A. Coffin, one of the founders of the General Electric Company and its first President.

As an award, it honors those whose accomplishments best reflect the qualities of initiative, perseverance, courage and foresight—which qualities were particularly characteristic of Charles A. Coffin, the country boy who fathered a great industry.

The Coffin Award is important in another way too. It helps make certain that General Electric, as a company, may never lose sight of the outstanding individual and his contribution.

We salute the winners.

GENERAL  **ELECTRIC**