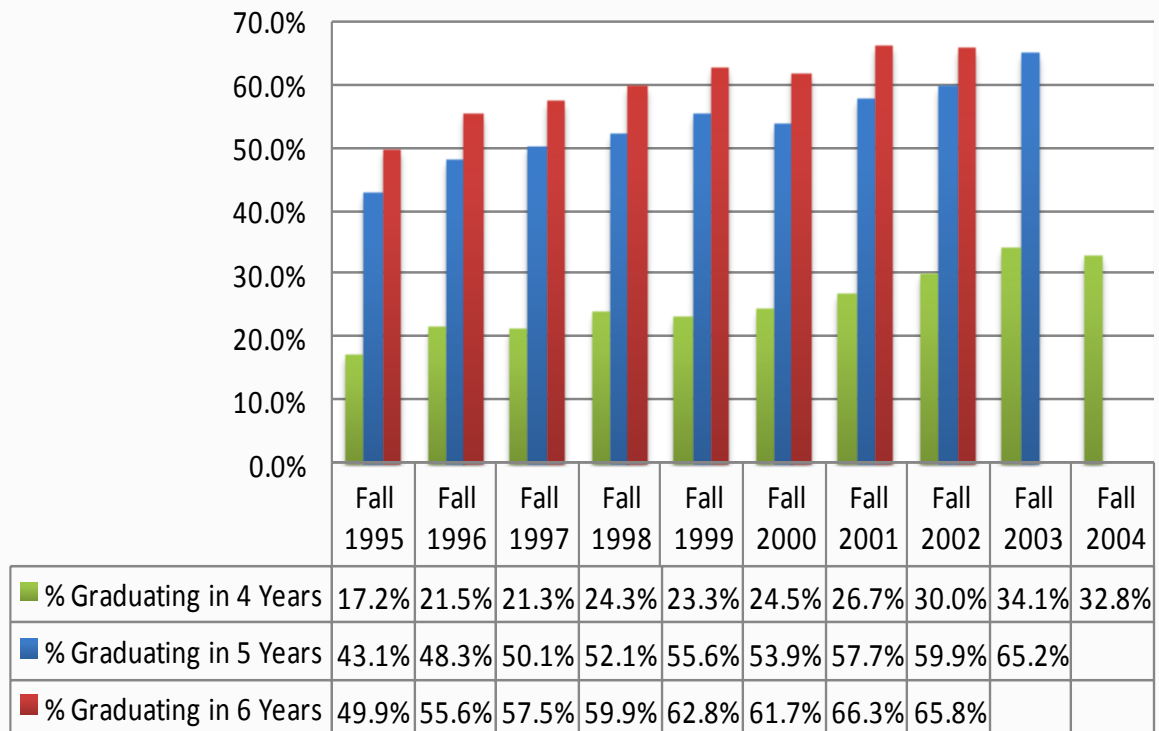


New Freshmen Graduation Rates



Data Definitions

- Cohorts include all first-time, first degree seeking new freshman; the graduation rate reflects the proportion of students in the beginning cohort who graduate within 4-, 5-, and 6-years from the time they start.
- Completions within 150% of expected time, or 6-year graduation rate, is the metric most commonly used to compare student graduation outcomes across institutions.

Points of Interest

- UW-L has the highest 6-year graduation rate of any of the UW System Comprehensive Universities.
- In Spring 2005, a group from the American Association of State Colleges and Universities (AASCU) visited UWL as part of a study of Universities demonstrating significant growth in 6-year graduation rates in an effort to identify factors contributing to improved student outcomes.

Office of Institutional Research

Office of the Provost/Vice Chancellor of Academic Affairs, 145 Graff Main Hall, University of Wisconsin—La Crosse
 1725 State Street, La Crosse, WI • Phone: (608) 785-8006, Fax: (608) 785-8046