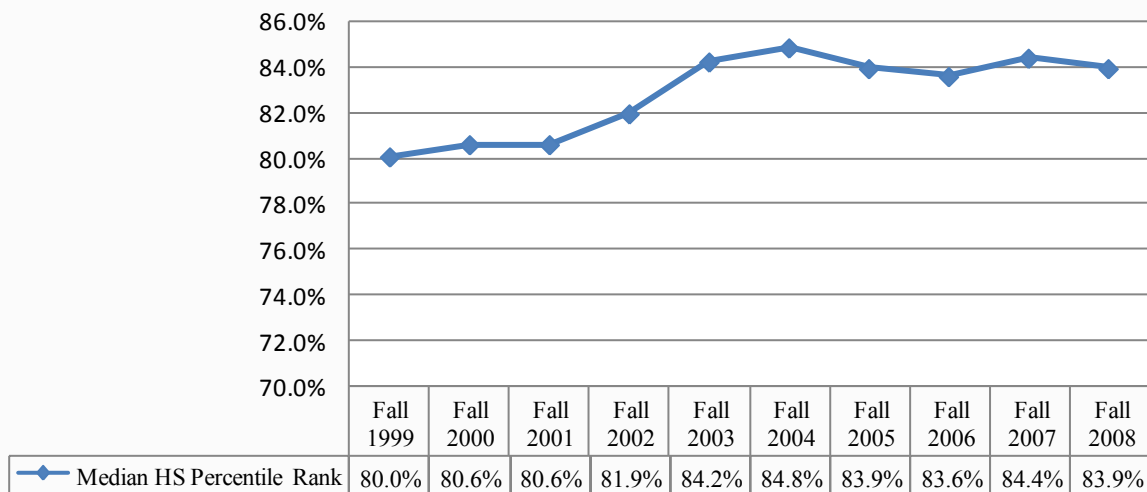
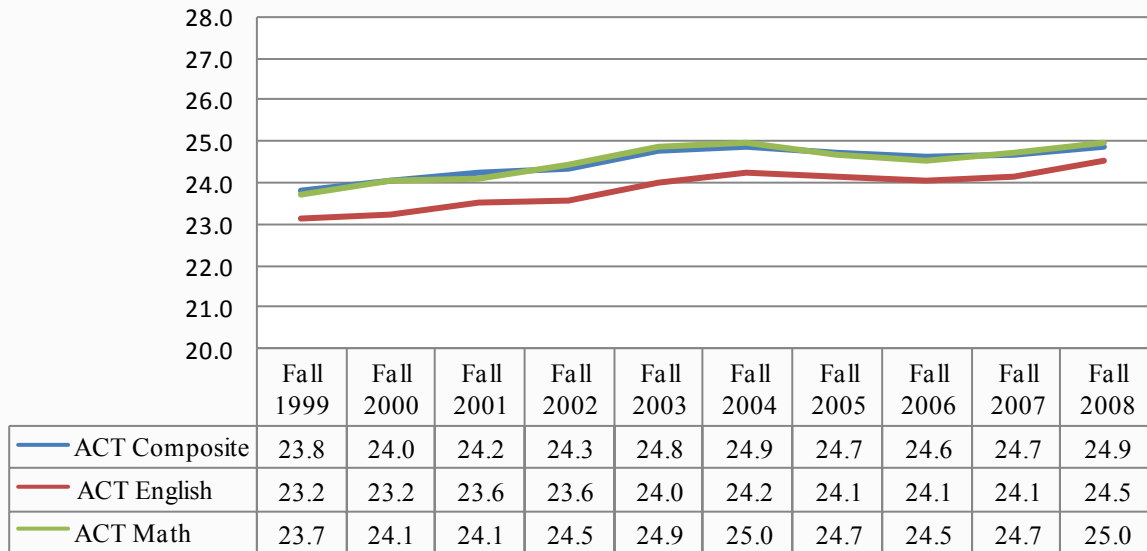


New Freshmen Academic Profile



Data Definitions

- Includes all first-time, first-degree seeking new freshmen entering in the Fall.
- Median rank and average scores exclude students who did not submit high school rank or ACT scores.

Points of Interest

- Seventy nine percent of new freshmen entering Fall 2007 were in the top 25% of their high school graduating class. Thirteen percent of new freshmen did not report a class rank.
- UW-L accepted 66.4% of new freshmen applicants for Fall 2008.
- Very few students who apply to UW-L opt to submit only SAT scores, though SAT scores are accepted. Because the number who submit these scores is comparatively small, average SAT scores are not included here.

Office of Institutional Research

Office of the Provost/Vice Chancellor of Academic Affairs, 145 Graff Main Hall, University of Wisconsin—La Crosse
1725 State Street, La Crosse, WI • Phone: (608) 785-8006, Fax: (608) 785-8046