

## NOT ALL ALUMNI

### PRACTICE LAW

#### SOME ARE JUDGES:

The relations between the Wisconsin Law School and the Wisconsin Judiciary have always been close. Early in the Law School's history, members of the Wisconsin Supreme Court served as lecturers; today Wisconsin Supreme Court Justice Nathan Heffernan offers a seminar in Appellate Practice. Some members of the Faculty have served as law clerks to Federal judges. Emeritus Professor William Gorham Rice, Jr. and Professor Willard Hurst both served as law clerks to U.S. Supreme Court Justice Louis D. Brandeis. Professor Joel Handler served as clerk to justice of the New Jersey Supreme Court; Professor William Whitford served as Motions Clerk in the U.S. Court of Appeals, Washington, D.C. Several of the new members who will join the Faculty in 1973-74 have served clerkships, one with a United States Supreme Court Justice. Each year, ten or twelve graduates accept widely sought positions as law clerks to Federal district court and federal and state court appellate judges.

The most striking indication of this close association is found in the fact that almost half of the county judges currently sitting in Wisconsin and a little more than half of the sitting Circuit Court judges are alumni of the Wisconsin Law School. We know of ten alumni who are judges in other states.

Three members of the Wisconsin Supreme Court are Law School alumni: Justices Bruce Beilfuss (1938), Connor Hansen (1937) and Nathan Heffernan (1948).



**Judge Duffy**  
(Milwaukee Sentinel Photo)



**Judge Fairchild**

Two members of the U.S. Court of Appeals for the Seventh Circuit, Judge Thomas E. Fairchild (1937) and Senior Judge F. Ryan Duffy (1912) are alumni. U.S. District Judge John W. Reynolds (1947), Milwaukee, is also an alumnus of the Wisconsin Law School.

Here are your classmates who are circuit and county judges:

1925-Circuit Judge Robert Gollmar, Baraboo;

1928-County Judge Charles Kading, Jefferson;

1929-County Judge Elliott Walstead, Milwaukee;  
Circuit Judge Lewis J. Charles, Ashland;

1930-County Judge Byron Conway, Wisconsin Rapids,  
Circuit Judge Merrill R. Farr, Eau Claire;

1931-County Judges William Bundy, Menomonie; Joseph Reidner, Durand; Circuit Judges Milton Meister, West Bend; James A. Martineau, Marinette;

1932-County Judges William O'Neil, Prairie du Chien; Harry White, Marinette; Harland Hill, Baraboo;

1933-County Judges Harry Larsen, Superior; Leonard Roraff, LaCrosse; Herbert J. Mueller, Oshkosh; Richard G. Harvey, Jr., Racine; Circuit Judge Richard Orton, Lancaster;

1934-County Judges Charles D. Madsen, Balsam Lake; William Jones, Racine; Lee C. Youngman, Barron; Circuit Judge Norris Maloney, Madison;

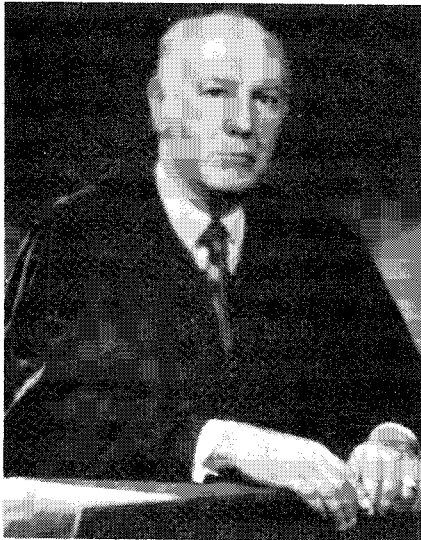
1935-County Judges Donald Schnabel, Merrill; Olga Bennett, Viroqua;

1936-County Judges Walter Cate, Ashland; Marshall Norseng, Chippewa Falls; William Buenzli, Madison; Carl E. Bjork, Phillips;

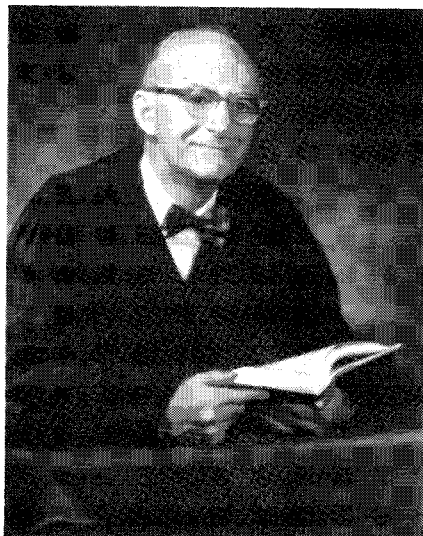
1937-County Judges Andrew Cotter, Montello; Sverre Roang, Janesville; Daniel O'Connor, Portage;

1938-County Judge Urban Van Susteren, Appleton;

1939-County Judges Eugene Toepel, LaCrosse; Albert L. Twesme, Whitehall; Joseph W. Wilkus, Sheboygan; Circuit Judge John Decker, Milwaukee;



**Justice Beilfuss**



**Justice Hansen**



**Justice Heffernan**

1940-County Judges Roger Elmer, Monroe; Erwin Zastrow, Elkhorn; David Sebor, Chilton; Circuit Judges Robert Parins, Green Bay; William C. Sachtjen, Madison;

1941-County Judges Peter J. Seidl, Medford; David Dancey, Waukesha; Nathan Wiese, Waupaca; Circuit Judges Christ Seraphim, Milwaukee; William Duffy, Green Bay; Lowell Schoengarth, Neillville;

1942-County Judge Arthur Cirilli, Superior; Circuit Judges Marvin Holz, Milwaukee; Robert Piffner, Chippewa Falls; Henry Gergen, Jr., Juneau; Arthur Luebke, Janesville;

1946-County Judges Boyd Clark, Wautoma; Ervin Bruner, Madison; Circuit Judges Peter Pappas, LaCrosse; Richard W. Bardwell, Madison;

1947-Circuit Judges Edmund Arpin, Oshkosh; Allan Kinney, Superior;

1948-County Judges John G. Buchen, Sheboygan; Warren Winton, Shell Lake; Harold Mueller, Manitowoc; Edwin Stephen, Sturgeon Bay;

1949-County Judges Edwin C. Dahlberg, Beloit; John C. Ahlgrimm, Racine; Frank W. Carter, Jr., Eagle River; Eugene McEssey, Fond du Lac; Circuit Judge Robert Landry, Milwaukee;

1950-County Judges Warren Grady, Port Washington; James W. Rice, Monroe; Leon Jones, Manitowoc; Robert Dean, Wausau;

1951-County Judges James R. Seering, Baraboo; Donald Steinmetz, Milwaukee; James Byers, Green Bay; Circuit Judges William Crane, Oshkosh; Ronald Keberle, Wausau;

1952-County Judges Mark Farnum, Beloit; John Curtin, Kewaunee; David

Willis, Green Lake; Archie Simonson, Madison; William Byrne, Madison; Joseph Schultz, Watertown;

1953-County Judge Gary Schlosstein, Alma;

1954-County Judges Harry Gundersen, Grantsburg; James M. Daley, Portage;

1955-County Judge William Reinecke, Lancaster; Circuit Judge John F. Foley, Milwaukee;

1956-County Judges Thomas Barland, Eau Claire; Joseph Kucirek, Wausau;

1957-County Judge Michael Torphy, Madison;

1962-County Judge Alvin Kelsey, Hayward;

1963-County Judge P. Charles Jones, Madison;

1966-County Judge Fred Kessler, Milwaukee;

Serving as judges in other states are:

1926-Circuit Judge George Feidler, Chicago;

1931-Circuit Judge William Atten, Wheaton, Illinois;

1933-Supreme Court Justice Kenneth J. O'Connell, Salem, Oregon;

1934-Circuit Judge Newell A. Lamb, Kentland, Indiana;

1936-Supreme Court Justice Howard Schmidt, Glendale, California;

1940-Justice David Zenoff, Supreme Court of Nevada, Carson City;

1948-County Judge Howard J. Otis, Brighton, Colorado;

1949-Judge Norman J. Putnam, Court of Appeals, Canton, Ohio;

1951-Judge Joseph J. Pernick, Court of Common Pleas, Detroit, Michigan;

1952-Circuit Judge John Warden, Coquille, Oregon;