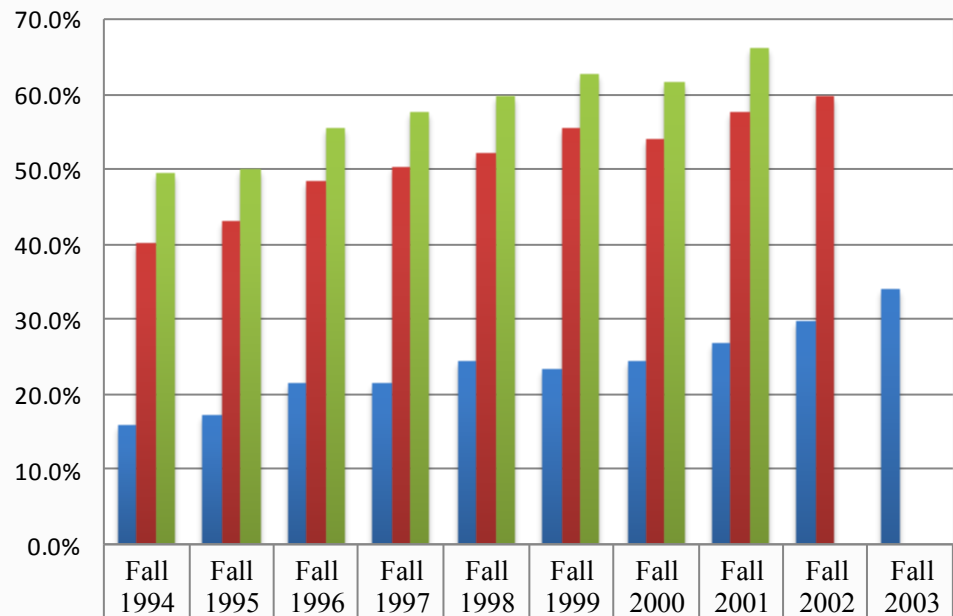


## New Freshmen Graduation Rates



■ % Graduating in 4 Years	15.8%	17.2%	21.5%	21.3%	24.3%	23.3%	24.5%	26.7%	29.6%	34.1%
■ % Graduating in 5 Years	40.0%	43.1%	48.3%	50.1%	52.1%	55.6%	53.9%	57.7%	59.9%	
■ % Graduating in 6 Years	49.5%	49.9%	55.6%	57.5%	59.9%	62.8%	61.7%	66.3%		

### Data Definitions

- Cohorts include all first-time, first degree seeking new freshman; the graduation rate reflects the proportion of students in the beginning cohort who graduate within 4-, 5-, and 6-years from the time they start.
- Completions within 150% of expected time, or 6-year graduation rate, is the metric most commonly used to compare student graduation outcomes across institutions.

### Points of Interest

- UW-L has the highest 6-year graduation rate of all UW System Comprehensive Universities.
- In Spring 2005, a group from the American Association of State Colleges and Universities (AASCU) visited UWL as part of a study of Universities demonstrating significant growth in 6-year graduation rates in an effort to identify factors contributing to improved student outcomes.

## Office of Institutional Research

Office of the Provost/Vice Chancellor of Academic Affairs, 145 Graff Main Hall, University of Wisconsin—La Crosse  
1725 State Street, La Crosse, WI • Phone: (608) 785-8006, Fax: (608) 785-8046