

# MEDICAL ALUMNI NEWSLETTER



## Council of Class Representatives

Plans for the formation of this body have been met with enthusiasm. The council should broaden the base of Alumni participation and provide a mechanism for the expression of individual and class opinion to the governing body.

The Council will meet in Madison the evening before Alumni Day, to discuss and recommend Alumni activities and policies. Past Presidents of the Association will be ex officio members of the Council of Class Representatives.

To get the show on the road, Alumni who have been active and displayed leadership in Alumni affairs have been selected. Each year the reunioning classes will be asked to select their class representatives for the succeeding year. From this group should come the future Directors of the Association.

Members who have already agreed to serve as Class Representatives are:

Class of 1927—John T. Morrison, 4804 Enfield Rd., Bethesda, Md.

Class of 1928—Robert Turell, 25 E. 83rd St., New York 28, New York

Class of 1929—Oliver E. Tjoflat, 4222 N. Grand Blvd., St. Louis 7, Missouri

Class of 1933—Melvin Hugh, 293 Fourth St., Baraboo, Wis.

Class of 1936—Marvin Steen, 421 Jefferson St., Oshkosh, Wis.

Class of 1937—Helen Dickie, University Hospitals, Madison, Wisconsin

Class of 1938—Lester Brillman, 405 Grand Avenue, Beloit, Wisconsin

Class of 1939—Florian Santini, 240 E. Aurora Ave.,



Ironwood, Michigan

Class of 1941—Harold Youngreen, 2021 Wilshire Blvd., Los Angeles 57, Calif.

Class of 1944—John Buessler, Dept. of Ophthalmology, University of Missouri, Columbia, Missouri

Class of 1946—Richard Wasserburger, Veterans Administration Hospital, 2500 Overlook Terrace, Madison, Wisconsin

Class of 1948—Ann Cinelis, 916 N. Eighth Street, Sheboygan, Wisconsin

Class of 1949—Bernard Lifson, 634 La Crosse St., Wilmette, Illinois



Class of 1950—Robert Starr, 318 South Main St., Viroqua, Wisconsin

Class of 1953—Sylvia Griem, Box 654, Ogden Dunes, Gary, Indiana

Class of 1958—Douglas Shanahan, 732 Boylston North, Seattle 2, Washington

Class of 1959—William Schoenwetter, Emerald, Wisconsin

## Open House at Medical Science

The University of Wisconsin Medical School held an Open House in its newest research addition, the Medical Science building, October 28-29. University faculty, the Board of Regents, cooperative agency representatives and the public attended the Friday afternoon ceremony and on Saturday morning university pre-medical students and Madison area high school students viewed the numerous exhibits. A tour of the six-story building, opened the first week in June, included exhibits and demonstrations of the research in progress with faculty members of the departments housed in the building available to answer questions.

## Wisconsin Medical Alumni Newsletter

published January, April, July, October  
by the

WISCONSIN MEDICAL ALUMNI  
ASSOCIATION

418 North Randall Avenue  
Madison, Wisconsin

### ALUMNI OFFICERS

*President*  
Mischa J. Lustok, M.D., '35 - Milwaukee

*President-Elect*  
Albert Martin, M.D., '35 - Milwaukee

*Directors*  
A. R. Curreri, M.D., '33 - Madison  
Ben Lawton, M.D., '46 - Marshfield  
Joseph Stone, M.D., '35 - Milwaukee  
Raymond Welbourne, M.D., '42 - Watertown

*Ex Officio*  
J. Z. Bowers, M.D., Dean  
U.W. Medical School - Madison

Einar A. Daniels, M.D., '34 - Milwaukee  
*Past-Presidents*

A. A. Quisling, M.D., '30 - Madison  
*Secretary-Treasurer*

Wm. Smiles, M.D., '42 - Ashland

*Editor*  
Robert Samp, M.D., '51

*Associate Editor*  
Mrs. Marcella Hilgers

## State Pediatricians Honor Dr. H. Kent Tenney



Dr. H. Kent Tenney, center, holds a rare volume on pediatrics presented him by State pediatricians. Looking on are Dean John Z. Bowers of the Medical School, left, and Dr. Nathan Smith, '45, right, Alfred D. Daniels Professor of Pediatrics and chairman of the department.

### Lectureship Established In His Honor

Dr. H. Kent Tenney, Clinical Professor of Pediatrics and well-known Madison pediatrician, was honored by Wisconsin pediatricians recently with the establishment of an annual H. Kent Tenney lectureship at the University of Wisconsin Medical School. Announcement of the lectureship was made at a dinner honoring Dr. Tenney at the State Medical Society. Dr. Tenney, well remembered by the Alumni for his clinical teaching in the Medical School, was honored for his many years of service not only in the practice and teaching of medicine, but for his many services to the state.

Author of a book on child care, Dr. Tenney was appropriately presented a rare volume on pediatrics, published in 1819. Dr. Charles Lobeck, Assistant Professor of pediatrics, made the presentation.

In announcing the honor, Dean John Z. Bowers, praised the 68 year old physician for "Always looking to the future" and "teaching science and service to the state."

Also paying tribute to the Madison pediatrician were former students, Dr. Nathan Smith, '45, Dr. Wallace McCrory, chairman of the department of pediatrics, University of Iowa; and Dr. L. M. Simonson, '33, Sheboygan, chairman of the medical society's division of school health.

### CORRECTION

In the last issue of the Newsletter, the pictures of Dr. J. E. Rose and Dr. Wacław Szybalski were reversed. Sorry.



## Postgraduate Education

The Medical School annually offers a series of carefully developed postgraduate programs at the Medical Center designed to attract national and international enrollments.

The remaining courses to be held on the Medical Center are as follows:

*General Practice—Current Views in Medical Practice.* Ovid O. Meyer, M.D., Director

A postgraduate course for practitioners of medicine will be presented by specialists in the Department of Medicine on four successive Thursday afternoons, 1:30-5:00 p.m. at University Hospitals.

January 19, 1961—Endocrinology and Metabolism

January 25, 1961—Hematology

February 2, 1961—Cardiology

February 9, 1961—Pulmonary Disease

*Hematologic Disorders in Pediatrics*, April 13-15, 1961 (2½ days). Nathan J. Smith, M.D., Director

Five half-day sessions will be devoted to the discussion of various disorders of the blood in infants and children. Visiting faculty members will present formal lectures, followed by selected case material and small group discussions. Emphasis will be on current and recent research activity in the diagnosis and management of blood disorders. Hemolytic disease, leukemia, bleeding disorders, reticulo-endotheliosis and anemias will be discussed.

*Pathology and Radiology of Diseases of the Chest*, May 11-13, 1961 (2½ days). D. Murray Angevine, M.D. and Lester W. Paul, M.D., Directors.

This course, offering a joint approach to the study of diseases of the chest, will consist of lectures and panel discussions covering a variety of diseases of the lungs and heart. A panel of distinguished guest speakers together with members of the University of Wisconsin Medical School Faculty will correlate the radiology and pathology of diseases of the chest.

*Neurology*, February 6 and 7, 1961 (2 days). Francis M. Forster, M.D., Director

This postgraduate course in Neurology is to be given in Milwaukee in the Senn wing staff room of the Milwaukee Hospital. The course, given by members of the Faculty of the University of Wisconsin and by distinguished invited guest speakers, presents the present day concepts of treatment of various neurological disorders encountered in the practice of medicine.

Epilepsy, Vascular Disease and Parkinsonism remain major therapeutic challenges in the neurologic field and these will be discussed extensively in the course of this program. There will be a special session on Child Neurology with demonstrations of techniques of neurological examination of infants and discussion of tests for temporal lobe function in children and the biochemical aspects of mental retardation.

The research aspects in Multiple Sclerosis will be reviewed, as will the neurologic aspects of high per-

formance aircraft flight and of space medicine.

Further information may be obtained by writing to the Coordinator of Postgraduate Medical Education, Wisconsin Center, 702 Langdon St., Madison 6, Wis.

## Freshman Class Enrollment

Ninety-one students were accepted for admittance to the Medical School this year as freshmen. A quick look at the statistics reveals the fact that 84 of the students were men and of the 7 women, only 1 is married as compared to 20 of the men. Three students were from Madison, 18 from Milwaukee, 45 from Wisconsin (cities other than Madison and Milwaukee), and 25 from practically as many states in the Union, with Ohio, New York, Michigan, Illinois and California placing more than one in the class ranks.

An international flavor is given the statistics by the fact that 5 of the students were foreign born (China, Norway, Hungary, Korea and Germany) but all received their elementary, high school or pre-med education at various year levels in the United States.

A last fact reveals that 39 freshmen had a degree upon entering, whereas 53 will receive a degree after their first year of medical training.

## Dr. William S. Middleton Granted Emeritus Status

Dr. Wm. S. Middleton, by action of the University of Wisconsin Board of Regents, was officially granted Emeritus faculty status as Dean Emeritus and Professor Emeritus of Medicine, effective July 1, 1960. The Board of Regents in granting him this honor, expressed sincere appreciation of his many years of faithful service and many contributions to medical progress.

Dr. Middleton has received many honors in his lifetime of teaching and administrative duties. In 1955, when he left the University of Wisconsin Medical School to accept a new assignment as Chief Medical Director of the Veterans' Administration, the Wisconsin State Legislature passed a resolution commending him for his many years of outstanding service to the State. He joined the Wisconsin Medical School staff in 1912 and served as Dean from 1935-55.

A veteran of two world wars, Dr. Middleton was awarded the Distinguished Service Medal and chosen a Fellow of the British Royal College of Physicians for his service during World War II, where he served as Chief Consultant of Medicine for troops in the Western Theatre and Chief Consultant for Internal Medicine in the European Theatre.

As former students, the Alumni wish to add their appreciation and congratulations to "The Dean." Wisconsin has been most fortunate to have had a man with the outstanding ability and leadership of Dr. Middleton to head the University Medical School.



## Old Wine – New Bottles

Modern medical science, along with all educational programs, has forced the old to make way for the modern. With the increased enrollments in schools, the rapidly accelerated teaching programs and the emphasis on research, physical facilities in a modern college periodically need a face-lifting. The modern stainless steel laboratories of today bear little resemblance to the old wooden bench types of a few years ago.

To keep abreast of its many new programs, the Medical Center, during the past five years, has embarked on a remodeling and building program. Two new buildings, the Medical Science building and Bardeen Laboratories, have been built with state, national and W.A.R.F. funds. By a series of remodeling projects, utilizing all available space in a more economical manner, additional teaching programs and research facilities have been added to the Medical School curriculum.

To acquaint you with a few of the many changes, some "before and after" pictures are printed below:



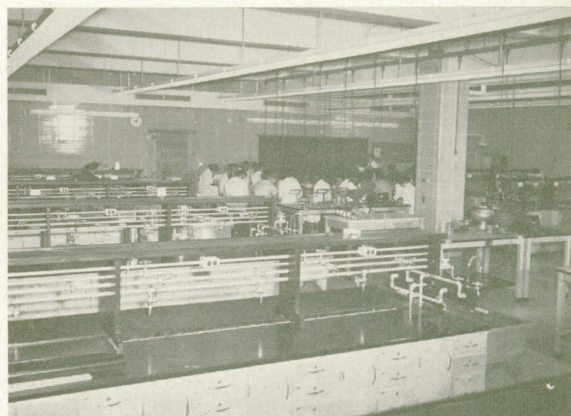
Most of you Alumni remember the Anatomy courses in Science Hall.



Compared with the new Histology Laboratory in Bardeen Laboratories—Dr. H. W. Mossman teaching.

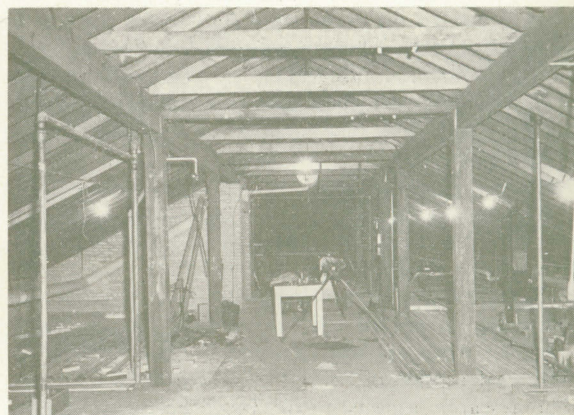


The old P. Chem. Laboratory in S.M.I., in continual use since S.M.I. was erected in 1928 until now. The benches will be replaced with tables and chairs and used as a library reading room and eventually made into a lecture room.



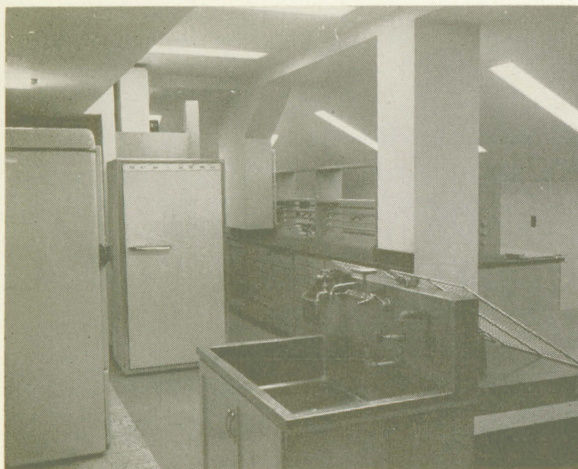
The gleaming P. Chem. Laboratory in Medical Science building.

Complete utilization of all available space is readily apparent when the fourth floor attic of the Student Infirmary is completely remodeled to house the new program of the Cancer Research Laboratories.

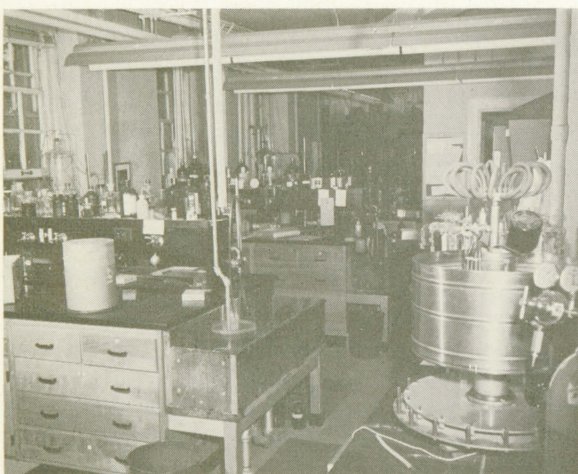


And this





Becomes this



A few changes have also been made in Bradley Memorial Hospitals, built in 1919. The basement now houses the Radioisotope research and teaching laboratory and Dr. Harry Waisman's laboratory for research on mental retardation.



A view of the limited reading quarters in the Library basement.

Other remodeling projects and changes have taken place at the Medical Center and shall continue to be necessary as more buildings and more programs are added. Funds for a new Genetics Building, which will contain space for the Medical Genetics Department, have recently been accepted by the Board of Regents; the hopes for a new McArdle Cancer Research building may soon be realized, and of course, a new library is in the offing. The last picture speaks for itself.

## Student Advisory Program

The Student Advisory Program at the University Medical School has been expanded to coordinate all student activity. Associate Dean Otto A. Mortensen, Assistant Professor Robert Coyle and Assistant Professor David Smith, representing the faculty, will work with the presidents of the four classes and WISMA, representing the student body. Faculty members will be available for consultation and discussion of any problems relating to financial, personal or academic difficulties among the entire medical student body.

## Karl Beyer Visiting Professor

Dr. Robert F. Pitts, Chairman of the Department of Physiology, Cornell University Medical School, has accepted an invitation to be the second Karl Beyer Visiting Professor. He will spend the week of February 20, 1961, at the University of Wisconsin Medical School and will present Convocation, Wednesday, February 22 at 4:00 p.m., in the Service Memorial Institutes Auditorium. Dr. Pitts has just completed a term as President of the American Physiological Society and is the author or a recently published book on "Physiological Basis of Diuretic Therapy." He is well-known for his work in renal physiology.

## Action of the Alumni Board of Directors

In addition to the action taken in the planning of Alumni events, the formation of a Council of Class Representatives and the progress of the Library Campaign, which are reported on in other articles in the Newsletter, the following decisions were made.

1. The nominating committee charged with responsibility for recommending a slate of officers for next year consist of the immediate Past President as Chairman and his two immediate predecessors.
2. The President, President Elect and the immediate Past President be designated the Executive Committee of the Board with power to act for the Board when expediency dictates immediate action.
3. The Association President speak to the Junior Class—preferably on Field Day—to acquaint them with the aims and functions of the Medical Alumni Association.



# Coming Alumni Events

A series of meetings has again been planned by the Medical Alumni Association this year. We strongly urge you to attend at least one of the meetings. Wisconsin Medical Alumni teach or practice in every one of the United States. Because of this wide geographical diversity, a meeting is planned for June, 1961, in conjunction with the A.M.A. Annual Meeting in New York City. In addition, three get-togethers are being arranged in cities other than Madison. A list of the meetings and dates follows:

\* \* \* \*

## Milwaukee Winter Meeting

Under the direction of *Dr. Al Martin*, '35, the Fourth Milwaukee session of the Medical Alumni Association will be held at the University Club on Friday, February 10.

The evening program, following cocktails and dinner at 7:00 p.m. will feature *Dr. Van Potter*, Professor of Oncology, speaking on "The Enzyme Deletion Theory of Cancer Formation."

Dean *John Z. Bowers* will report on the progress of the Medical School and President *Mischa Lustok* and Alumni officers will report on Alumni affairs.

\* \* \* \*

## Spring Up-state Meeting

*Dr. Ben Lawton*, '46, is going ahead with plans for a meeting to be held, preferably in April in one of the up-state cities, possibly in the central Wisconsin or Fox River Valley area. Specific proposals as to time and place will be announced later.

\* \* \* \*

## Milwaukee Meeting in Conjunction with State Medical Society Meetings.

As has been done the past several years, a luncheon meeting is planned in Milwaukee at the time of the State Medical Society Meetings, the first week in May. Attendance at this annual get-together has steadily increased and much interest has been expressed in this type of informal luncheon. Arrangements by *Dr. Joe Stone*, '35, have been completed for a room and catering service at the Milwaukee Arena with a guest speaker and interesting program promised.

\* \* \* \*

## Alumni Day—May 19

Because of the increased attendance and enthusiasm shown by returning Alumni for the annual Alumni reunion, a bigger and better program is being planned by *Dr. A. R. Curreri*, '33 for May 19, 1961. The program will again be held in Service Memorial Institutes, with cocktails and banquet at the East Side Businessmen's Club. Rooms will be reserved for the returning Alumni at the Holiday Inn in Madison, where the meeting of Class Representatives and Past Presidents as well as the meetings of the Reunioning Classes will be held. The evening program will again include the presentation of an Emeritus Faculty Award and the Medical Alumni Citation.

As was done last year, another Silver Anniversary Class brochure will be prepared for distribution to the Class of 1936.

\* \* \* \*

## June Luncheon Meeting

*Dr. Robert Turell*, '28, has accepted chairmanship of the meeting, held in connection with the A.M.A. Annual Meeting. He is moving ahead with arrangements for guest speakers and arrangements for the luncheon to be held as close as possible to location of the A.M.A. Scientific Program.

# Medical Center Finances

We talk blithely about Wisconsin being a "tax supported" medical school, and indeed, legislative appropriations do provide support for the basic programs. However, some interesting figures just released by the Medical School illustrate the increasing role gifts and grants play in supporting medical center programs.

In the year ending July 30, 1960, \$3,876,519 was received in gifts and grants for research and training, compared to \$2,758,094 received the previous year.

The operating budgets for all medical center programs in 1959-60 totalled \$8,352,520, exclusive of gifts and grants. Included are:

University Hospitals .....	\$5,886,714
(All income earned from patients)	
Medical School .....	1,791,089
School of Nursing .....	137,289
State Laboratory of Hygiene .....	514,321
Wisconsin Psychiatric Institute .....	23,107
Total .....	\$8,352,520

Gift and grant funds comprise nearly one-third of the Medical Center annual expenditures.

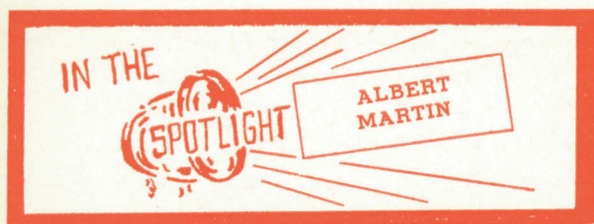
The primary sources of research funds continue to be the National Institutes of Health of the U.S. Health Service (\$2,468,856), the Voluntary Health Agencies \$615,907) and the Wisconsin Alumni Research Foundation (181,144). Legislative appropriations provided \$172,831 for research.

Increasingly, individuals, industry and foundations are supporting our Medical Center programs through scholarships, loan funds, gifts supporting faculty members and a wide variety of research programs. Over four hundred individuals contributed gifts starting at \$1.00 in support of research, mainly in cancer and cardiovascular disease.

With the accelerated rate of growth of Medical education and research your school must rely in the future even more heavily on such support.

As foundations, corporations and interested non-alumni are approached it is the degree of medical alumni support which is used as a measuring stick to gauge their contributions.





## Profile of a President-elect . . .

*Albert Martin*, an active Wisconsin Medical Alumnus from Milwaukee was elected President-Elect of the Association at the annual Alumni Day meeting. A member of the Board of Directors, the Library Building Committee, and past-director of the Industrial Campaign, Dr. Martin lives at 2669 N. Terrace St.

He and his wife, Marvel, have three children—all boys. He practices surgery and holds appointments as attending surgeon at Milwaukee County, St. Mary's and Milwaukee hospitals. In addition he teaches at Marquette Medical School where he holds an appointment as Asst. Clinical Professor of Surgery.

Dr. Martin, who attended the University of Wisconsin for his Basic Science years, transferred to Harvard where he received in M.D. degree in 1935. After an internship at Lankenau Hospital in Philadelphia, he accepted an appointment as Instructor in Surgery at the University of Pennsylvania Medical School and practiced in Philadelphia. From 1947 to the present he has lived and practiced in Milwaukee. He is an avid golfer, but finds little time for his favorite sport. His society affiliations include: Fellow, American College of Surgeons Wisconsin Surgery Society; Milwaukee Surgical Society; Milwaukee Academy of Medicine and his active participation in Wisconsin Medical Alumni activities.

## Adolf Gunderson Visiting Professors For 1961 Named

Dean John Z. Bowers has announced the selection of Drs. Maxwell Finland and Thomas F. Dougherty as the Adolf Gunderson Visiting Professors for the current academic year.

Financed by an annual gift from the Adolf Gunderson Medical Foundation of La Crosse, Wisconsin, this program enables the Medical School to bring to its campus each year two distinguished medical scientists. This represents a broadening of the program instituted by the Foundation in 1946 as a memorial lectureship. Dr. Finland, Associate Professor of Medicine, Harvard Medical School, Associate Director, Thorndike Memorial Laboratory and Physician-in-Chief, Fourth Medical Service, Boston City Hospital, will visit the medical campus the week of March 26.

Dr. Dougherty, Professor and Chairman of the Department of Anatomy, University of Utah College of Medicine will come to Madison the early part of February.

## Dr. Robin Buerki to Be Honored



Pictured above is a photograph of the oil painting of Dr. Robin Buerki to be hung in the lobby of University Hospitals.

The portrait will be presented to University President Conrad Elvehjem by Dean John Bowers at a ceremony honoring Dr. Buerki, the first Superintendent of University Hospitals, Friday, November 5, at 4:00 p.m. in Bardeen Auditorium.

Expressions of appreciation for the 18 years of faithful service to his Alma Mater and the State of Wisconsin General Hospital will be presented by former colleagues Dr. Wm. D. Stovall and Dr. Karver L. Puestow. After the ceremony, Dr. and Mrs. Buerki will be guests at a dinner and social hour planned by their Madison friends.

An Alumnus of the University of Wisconsin, B.S. in 1915, Dr. Buerki received his M.D. degree at the University of Pennsylvania. Following service in World War I, he held an appointment at the University of Pennsylvania School of Medicine and later practiced in Idaho and Oregon before returning to Wisconsin in 1923 to head the University Hospitals, then under construction. Dr. Buerki stayed on as Superintendent until 1941 when he left to head the Graduate School of Medicine at the University of Pennsylvania, and to direct its University Hospital.

Dr. Buerki, at present, is Director of Henry Ford Hospital in Detroit, Michigan.



## Library Fund Total? Not Enough to Build!

The question most often asked of Mischa Lustok and members of the Library Campaign Committee is "Will we build in 1961?" They're asking the wrong source, only you can provide the answer.

The fund total is nearing the one-half million dollar level but a total of \$600,000 is needed if we are to begin construction in 1961.

You can insure that we will break ground on Alumni Day, May, 1961 by sending your checks and pledges now. Our friends in industry will also contribute but the obligation of leadership is ours.

### Reunioning Classes Take Note

The class of '51, led by *John Allen*, has gotten the jump on all reunioning classes with their campaign for a class gift to the library fund in full swing. Aimed at 100% participation, their results already are impressive.

Adorning the office walls of several hundred Alumni are the autographed pictures of Dr. Middleton and the certificates of recognition sent to library fund contributors in the various categories as their pledges are fulfilled. If you qualify, your picture and certificate will reach you shortly.

You receive cumulative credit for all gifts. Upgrade your contribution, extend your pledge for an additional period and qualify for these symbols of recognition.

### THE TOP TEN TOTALS

1935 .....	\$12,547
1933 .....	11,810
1932 .....	10,020
1934 .....	9,192
1930 .....	8,500
1936 .....	8,235
1943 (March) .....	8,080
1929 .....	7,128
1937 .....	6,820
1942 .....	6,000

### CHARTER MEMBERS

#### Bronze Plaque Alumnus

Eugene & Dorothy Betlach	Roland Jacobson
Harold Bishop	C. V. Kierzkowski
P. B. Blanchard	William Konnak
Alexander Braze	Robert Krohn
Benjamin Brindley	Jules Levin & Mrs.
Henry Brosin	Norman Lindquist
C. Christenson	Albert Martin
Paul Collopy	Ovid Meyer
A. R. Curreri	Edward Mielke
Einar Daniels	Irving Moskowitz
Helen Dickie	Jerome Paulson
Richard Dickman	Herbert Pohle
C. R. Dix	Karver Puestow
Adam Earney	Hans Reese
Hubert H. Hamel	M. Richardson
Frances Hellebrandt	Edward P. Roemer
Melvin Huth	Roy Rounds

Wm. Shanahan  
Florian Santini  
Melvin Stuessy  
Marion Swigart  
E. E. Tennant  
Oliver Tjoflat  
Robert Turell

Lucy Vernetti  
Ray Welbourne  
Marvin Wells  
Anton Wellstein  
Frank Weston  
Edward R. White, Jr.  
Herman Wirka

### In Memory of:

Joseph H. & Christine Brown (Harwin J. Brown)  
T. H. Bast  
Robert Gavin, M.D.  
F. J. Gaenslen, M.D. (Mrs. Clara Gaenslen)  
Jack Geisenfeld, M.D.  
John W. Gilmore, M.D.  
Frank E. Huston (Drs. John Huston, Erwin Huston & John Huston, Jr.)  
Maurice J. Ansfield and Mrs. Hazel M. Price  
Carl E. Lee (Howard Lee)  
George Lemmer, M.D. (Kenneth Lemmer)  
Jean Louise Mayer (Dr. & Mrs. Hano Mayer)  
Christina Cameron Murray  
Gunnar Quisling, M.D. (A. A. Quisling)  
Wm. J. and Clara Shapiro (Herman Shapiro)  
Edward D. Stanton, M.D. (Mrs. E. D. Stanton)  
David and Gussie Zizmor (Judah Zizmor)

### In Honor of:

W. J. Meek

### Middleton Brown Derby Alumnus

John Adametz	Morris I. Gerner	Stevens Martin
Herb & Katherine Aitken	Jay S. Goodman	F. O. Meister
Jeanne Andrews	Paul Goodman	John Miller
Vernon Bass	Emily M. Gray	John Morrison
Roland Benson	Carl Greenstein	David W. Ovitt
Laura Bickel	Elizabeth Grim	Edith Parkhill
Roy Blehn	Oscar Hanson	Melvin G. Peterson
James Bingham	Philip W. Hardie	Ethan Pfefferkorn
Edward Birge	John Harris	Wilson Phillips
Norman Birkeck	Frederick G. Hidde	Walter Rein
David Boyce	Wm. Horowitz	James Russell
Sam Boyer	Adolph Hutter	R. W. Schroeder
Robin Buerki	Robert Hyslop	David Schuele
Ralph E. Campbell	Everett Johnson	Delbert L. Secrist
K. K. Chen	Gordon Kaske	J. L. Sims
Philip Christiansen	Ervin C. Kaye	William L. Sprague
Harold & Mary Coon	Robert A. Kebbekus	Gilbert Stannard
Brad Crandell	Martin Kein	Gordon Stewler
Harry Culver	Charles Kempthorne	Robert M. Sutton
Eugene Dallwig	Leslie Kindschi	Philip Svec
W. F. Donlin	Martin H. Klein	Wm. J. Swansbro
Paul Edwards	Homer Kohler	H. J. Tausend
Stanley Edwards	Emil Kuhe	Archie Tax
O. M. Elkins	Chester Kurtz	Alban Tessier
Silas M. Evans	Frank Leitz	Caroline Thompson
Victor Falk	T. A. Leonard	Charles Trush
H. Fishbain	Leonard Lovshin	Robert Waffle
Edward Foss	William Luetke	Thomas Walsh
Ann Fred	Mischa Lustok	Sidney Wynn
Fred Gaenslen	Frederick Madison	Wm. P. Young
	Florence Mahoney	Harold Youngreen

### Middleton Medical Alumnus

Emmett Ackerman	Irvin Becker	Lester Brillman
Eugene Adashek	George Behnke	Warner Bump
Robin Allin	Sam Behr	R. C. Bunts
Alton Anderson	Joseph Behrend	E. C. Burgess
Henry Anderson	John Bell	Meredith F. Campbell
D. Murray Angevine	Douglas Bell	Marie Carns
Fred Ansfield	Herbert Benn	Homer Carter
John Armbruster	Robert Benson	Sam Chapman
Mark J. Bach	John Berger	Howard Christensen
Max Bachhuber	W. J. Berwanger	Norman Clausen
Raymond Baldwin	I. R. Birnbaum	Patrick M. Cmeyla
Herbert Bandell	Phillips Bland	Vernon L. Cofer, Jr.
Paul Bassewitz	Samuel S. Blankstein	Royden Collins
S. R. Beatty	Peggy Bond	John E. Conway
Dean Becker, Jr.	Charles R. Brillman	Garrett A. Cooper



Howard Correll  
William Crowley  
John Curtis

R. J. Dancy  
F. J. Davis  
Mathew Davis  
Harold F. Deutsch  
C. M. Dobson  
Margaret Doer-  
Muendel  
Capt. C. T. Doudna  
Della Drips  
Peter Duehr

Burnell Eckardt  
Wilmer Edwards  
Herman Eisenberg  
James Evans  
Richard Evans  
Norman Fein  
Selmer Feld  
George Fiedler  
George Finer  
Milton Finn  
Albert Fisher  
Edward Fisher  
Martin Fleigel  
Hugh Fogo  
Ruth & Mark Poster  
William Fox  
Norman Franken  
F. M. Frechette  
Meyer Friedman  
Leland E. Friedrich  
Oscar Friske  
John Frost  
Nancy Furstenberg

Everett Gage  
Richard W. Garrity  
Herbert Gasser  
Alvin Gay  
Morris Gerner  
Herbert Giller  
Robert Gilman  
Benjamin Glover  
Thomas Goeke  
Morris Gold  
Farrell Golden  
Peter Golden  
David Goldstein  
Marvin N. Golper  
J. H. Goodlad  
Edgar S. Gordon  
Norvan Gordon  
Joseph A. Gosman  
Claude Grant  
Gerald Greder  
James Green  
Marvin Greiber  
Erwin Grossman  
Thorolf Gunderson  
James Gunn

Horace Hansen  
Ray Hansen  
Harold L. Harris  
Donald Hastings  
Thomas Haug  
Theodore Heller  
Ann Henschel  
Aaron Herschfus  
C. Hugh Hickey  
Nels Hill  
Cliff. Hogenson  
Frances Holford  
David Howell  
Everett Humke  
Kenneth Humke  
Sidney Hurwitz  
Volney Hyslop  
Wallace Irwin  
Sture Johnson  
Merritt Jones  
Charlotte Jordan  
Milton H. Joyce  
John A. Juhl  
A. Jurishica

Louis Kagen  
Solomon Kann  
Samuel Katz  
J. E. Kaufman  
S. Harvard Kaufman  
Donald Kaump  
Neal Kirkpatrick  
John L. Keeley  
Ralph Kennedy  
A. C. Kissling  
Roger Kjenvet  
Walter Klunpell

Irving Klitsner  
John Koepsell  
John Kreher  
Raymond Kuhn  
Palmer R. Kundert

Joseph J. Lalich  
Bert Lambrecht  
Francis Larne  
Harry Larson  
Frank Larson  
Roger Laubenheimer  
Max Laven  
Ben Lawton  
Eleanor Leslie

Roland R. Liebenow  
Leo Lifschutz  
Harold Lubing  
Donald W. Maas  
John MacGregor  
Leslie MacNaughton  
Ernest MacVicar  
George Magnin  
Andrew R. Mailer  
Harry Mannis  
Ben Mannis  
Kenneth Manz  
Charles Martin  
Arpad Masley  
Robert Mason  
William B. Mautz  
Frank D. McCarthy  
Michael McCarty  
James McIntosh  
C. W. McMoran  
Dermont Melick  
John Mendenhall  
William Merkow  
Meryl Miles  
Albert Miller  
Robert Miller  
Theodore Millman  
Selby Mills  
Paul W. Moen  
Frederic Mohs  
John H. Morton  
Otto Mortenson  
Gilbert Mueller  
Martin Mueller  
Arno Mundt  
Earl Muntz

Robert Natelson  
James Nellen  
William A. Nielsen  
Eugene Nordby  
William Oatway  
Henry Okagaki  
May Davies O'Neil  
Carroll Osgood  
R. S. Overton  
Wilbert Parker  
John Parks  
Hansi R. Patience  
Ross Paul  
Ben M. Peckham  
Gordon Perisho  
Frank Perlman  
Gordon W. Peterson  
Jack Peterson  
Edward Phillips  
L. M. Pippin  
Jerome Pizer  
Dean Plazak  
L. Pomainville  
Rolf Poser  
Sidney Posner  
Charles Puestow

Ray Quandt  
Robert Quinn  
Rolf Quisling  
Sverre Quisling  
Milton Radenwan  
Robert Ramlow  
A. Frederick  
Rasmussen  
N. G. Rasmussen  
Harvey Raszkowski  
Herbert Raube  
Thomas J. Rice  
Shafik Richany  
Michael Rice  
Leonard Robbins  
Robert Roessler  
Sion Rogers  
Arlan Lee  
Rosenbloom  
Madeline Roueche

George Rowe  
Sidney Rubin  
Ray R. Rueckert  
William Russell  
Lester Salinsky  
Robert K. Salter  
Edwin Schalmo  
Frank Scheible  
Charles E. Schmidt  
Herbert Schmidt  
Kenneth Schmidt  
Henry Schmitz  
R. C. Schmitz  
A. Schoenenberger  
Ray Schrank  
Morris Schroeder  
Isadore Schultz  
Bernard Schwamm  
Maurice Seever  
Elvira Seno  
Lynn Seward  
Bessey Heald  
Shebesta  
Michael Shutkin  
Emil Shebesta  
June Shafer  
William Sheehan  
Joseph Shimpia  
Net Shutkin  
Carl Sibilsky  
Eber Simpson  
William Smiles  
Alex Spooner  
J. C. Springberg  
Joseph Springer  
Karl Stahmer  
George Stebbins  
Marcella Steel  
Marvin Steen  
Norman Steiner  
John Steinhaus  
Ralph Stevens  
Clyde Stevenson  
Berenice I. Stone  
Joseph Stone  
Walter Sullivan  
Aaron Sweed  
Samuel Sweet

John Talbot  
Leslie Tasche  
Joel Taxman  
Ivan Taylor  
William Taylor  
Raymond Ten Pas  
Oscar Thoeny  
Madeline Thornton  
L. Thurwachter  
C. Tomlinson  
Thomas Tormey  
Robert Towle  
Norbert Trauba  
Frank Treskow  
Perry Triggs  
James Tuura  
J. Kent Tweeten  
Bernice H. Tyner

Eugene Usow  
Wm. F. Vaudreuil  
William Wagner  
Raymond Waisman  
Willard Wall  
Alfred Wallner  
Judith Walton  
Willia Warner  
W. L. Washburn  
Robert Watson  
Alice Watts  
John B. Wear  
John B. Wear, Jr.  
Marie B. Webster  
Frank Weeks  
George H. Wegmann  
Benjamin Wein  
Arvin Weinstein  
J. D. Weinstein  
David Welton  
Harold Wenger  
Joseph Wepfer  
Donald L. Werner  
Ralph Whaley  
Raymond Whitsitt  
Rodney Wichman  
James Wilkie  
D. L. Williams  
J. H. Wishart  
Margaret C. Winston  
King Woodward

## Other Generous Contributors by Classes

**Class of 1913**  
Franklin Nuzum

**Class of 1914**  
Harry R. Foerster  
Anders Weigen

**Class of 1915**  
H. C. Bumpus, Jr.  
Frank B. Marek

**Class of 1916**  
Nordahl O.  
Gunderson  
Dexter H. Witte

**Class of 1917**  
Alfred L. Mayfield  
Edward J. Van Lier

**Class of 1918**  
Leland S. McKittrick

**Class of 1919**  
Fred J. Hodges  
Harold D. Kerr  
Leslie L. McCoy  
John Skavlem  
Hartwick M. Stang

**Class of 1921**  
Norton J. Eversoll  
Elmer Severinghaus

**Class of 1922**  
John W. Connell  
Robert D. Millard  
Robert B.  
Montgomery  
Carl J. Weber  
Cleveland J. White

**Class of 1923**  
R. H. Frederick  
Norman Laske  
Robert H. Smuckler

**Class of 1924**  
Anthony Bianco  
Margaret Craighill  
Arne Gorder  
Frances V. Herwig-  
Kupper  
James S. Hess  
Roland Jacobson  
Homer D. Kesten  
Albert E. Meinert  
A. L. Newcombe  
C. K. Schubert  
Irwin Schulz

**Class of 1925**  
Mary R. Eleston  
L. W. Gregory  
Lyle G. Phillips  
Charles B. Puestow

**Class of 1926**  
Clarence O. Heimdal  
Robert Holcombe  
Elizabeth Kundert  
Mark E. Nesbit  
Fred G. Prehn  
Henry Romberg  
Elizabeth Rose  
Lazare M. Shapiro

**Class of 1927**  
Myra E. Burke  
John Crab  
Margarete Hatfield  
Gorton Ritchie  
O. A. Sander  
Roland J. Schacht  
Milton Senn  
Arthur C. Taylor

**Class of 1928**  
Janet Barnes  
Mead Burke  
Milton Erickson  
Frederic W. Haigh  
Maurice Hargrove  
Paul Hemphill

John B. Hitz  
Adolph C. Kammer  
Ferdinand Kojis  
William H. Lipman  
M. O. Lundt  
Raymond R.  
Richards

**Class of 1929**  
David J. Ansfield  
K. W. Emanuel  
Ralph W. Garens  
Arthur Hansen  
Sam L. Henke  
Robert G. Hinckley  
Ralph Jones  
Joseph H. Marks  
Dwight J. Moiser  
Theodore W. Opper  
Edwin L. Prien

**Class of 1930**  
D. C. Beebe  
M. O. Boundry  
Merlyn G. Henry  
Harold L. Miller  
Traugott H.  
Nammacher  
M. J. Pescor  
David D. Ruehlman  
Clifford Wiswell

**Class of 1931**  
F. G. Bachhuber  
Thomas Burdon  
William Clark  
Adolph Dasler  
Ely Epstein  
Harry Feldman  
Meyer S. Fox  
Edgar W. Huth  
Leif H. Lokvam  
J. Stuart Moffatt  
Carol M. Rice  
Isaac J. Sarfatty  
Donald S. Schuster  
A. M. Schwittay

**Class of 1932**  
Alois M. Bachhuber  
Benjamin H.  
Brunkow  
Lawrence L. Garner  
Howard L. Hauge  
Earl V. Hicks  
Katherine Jackson  
John McCarter  
F. H. McGovern  
Cecil A. Morrow  
Norman W. Paul  
C. Richard Smith

**Class of 1933**  
E. W. Brott  
Lucile Eising  
Frederick Joachim\*  
Arno Lesin  
Max W. Livingston  
Lloyd Simonson  
Edwin S. Sinalko  
L. F. Webster  
David J. Zubatsky

**Class of 1934**  
Norbert Barwasser  
Stella Burdette  
I. I. Cash  
Bernard Friedman  
Hance F. Haney  
Jack J. Levin  
Sam J. Lipkin  
Moreton Magid  
Norbert A. McGreane  
Walter O. Paulson  
Harold O. Schneider  
John R. Smith

**Class of 1935**  
Ben J. Axel  
Sidney G. Babbitz  
H. R. Benson  
Lawrence W.  
Kaufman  
Hurbert D. Krieger

Herbert C. Lee  
Curtis J. Lund  
H. G. E. Mallow  
Thomas J. Mathews  
R. B. Pelkey  
Albert Stahmer  
Betsy Owen Steele  
Gilbert C. Tomskey  
Carlton Wirthwein  
Robert D. Wright

**Class of 1936**  
Louis L. Bensman  
Donald S. Bolstad  
Eleanor P. Cheydleur  
William R. Ferguson  
George H. Hess  
Charles O. Olson  
Joseph Weber  
Royal J. Westcott

**Class of 1937**  
Edward Bachhuber  
Harry Berland  
Ruth E. Church  
J. W. Doolittle  
E. G. Glenn  
Frank F. Gollin  
Nathan Jacobs  
Ralph Landes  
James V. Lowry  
Joseph Mufson  
Emanuel M. Oxman  
Harry K. Purcell  
Jackman Pyre  
Arthur Reinardy  
Albert A. Sames  
Walter J. Schact

**Class of 1938**  
O. A. Ellingson  
James H. Ewing  
Nathan M. Grossman  
Walter F. Kammer  
Michael M. Karl  
Charles S. Kipen  
Milton Lozoff  
Hector C. Marsh  
Harry R. Maytum  
James Miller  
Daniel N. Pickar  
Robert W. Schneider  
Mildred M. Stone\*  
Milton Zemlyn

**Class of 1939**  
C. M. Carney  
Dann B. Claudon  
Harvey Cooperman  
Hervey Dietrich  
William Hildebrand  
Roy A. Hulse  
George W. Marbray  
Philip H. Seefeld  
Nathan Steinberg  
Frederick J.  
Stoddard  
George R. Thuerer  
Samuel G. Weisfeld  
Harold Werbel

**Class of 1940**  
G. J. Bachhuber  
Jack S. Chudnoff  
Elmer F. Franseen  
John Halbert  
Gregory P.  
Langenfeld  
Theodore G. Lathrop  
Menelaus P. Peters  
Mary Rohr

**Class of 1941**  
Simon Cherkasky  
Bernard Hulbert  
Sidney Z. Hulbert  
Grace C. Kammer  
Kenneth P.  
Knutson  
Edward L. Perry  
Donald Prasser  
Robert Randolph  
Frederick Stare  
Eleanor A. Waskow  
Clayton Wheeler



**Class of 1942**  
B. E. Douglass  
Russel S. Pelton

**Class of 1943**  
(March 2)  
Howard A. Bronson  
E. D. Detjen  
A. A. Drescher  
Ralph C. Frank  
John Fulton  
Francis E. Gehin  
Norman M. Hankin  
Carl E. Johnsen, Jr.  
Walter Luedtke  
Laird McNeel  
E. J. Netzwow  
Burton M.  
Zimmerman

**Class of 1943**  
(Nov. 20)  
Barney B. Becker  
Clarence P. Chrest  
R. P. Embick  
Richard J. Hennen  
Keith Keane  
Arthur Levens  
Aaron Mannis  
Richard Rowe  
Ruben Schmidt

**Class of 1944**  
G. F. Crikelair  
Farrington Daniels,  
Jr.  
J. L. Daniels  
Larry H. Hogan  
William J. Little  
Robert Lotz  
Wallace McCrory  
William Randolph  
Max M. Smith\*  
Charles H. Willison  
Robert G. Wochos  
Marshall L. Weber

**Class of 1945**  
Homer P. Baker  
David Bradley  
D. A. Cohen  
Dean A. Emanuel  
Thomas Fountaine  
Avery C. Halberg  
Gilman E. Heggstad  
John M. Irvin  
Edward H. Kass  
Jean S. LePoidevin  
LeRoy Misuraca  
Henry A. Peters\*  
Ralph J. Schlaeger  
Calvin F. Settlage  
David J. Sievers  
Keith B. Witte

**Class of 1946**  
Julian E. Abrams  
Melvin G. Apell  
David S. Arvold  
George Benish  
Alan B. Fidler  
Herman P. Gladston  
Eldred F. Hardtke  
Wells F. Harvey  
J. Richard Johnson\*  
John Keefrey  
Alfred E. Leiser  
Albert Liebman  
Tim H. McDonell  
Robert M. Schuyler  
Paul E. Stange  
Ervin Teplin  
Burton A. Waisbren  
Richard H.  
Wasserburger\*

**Class of 1947**  
Gerald Baum  
Hans Hartenstein  
George R. Kennedy  
Merlin J. Olson  
Royal Rottor\*  
Sigurd E. Sivertson  
Donald Watzke

**Class of 1948**  
Wilbur M. Benson  
W. S. Ketrichson  
Roswell H. Fine  
Richard B. Foe  
Horace W. Gerarde  
Robert O. Johnson\*  
Donald R. Korst  
Morris M. Meister  
Marvin W. Nelson  
John N. Richards  
Chester Waits

**Class of 1949**  
Harry D.  
Baernstein  
Greta Camel  
Robert W. Cranston  
June A. Dvorak  
Fred P. Krumenacher  
Sherman R. Lee  
A. S. Lieberthal  
Bernard I. Lifson  
Gilbert A. Reese  
Charles J. Ryan

**Class of 1950**  
Jeanne Anderson  
Donald A. Franklin  
Evan L. Frederickson  
Gerald T. Jansen  
Virginia Payne  
Walter C. Southcott  
Anna Marie Travis  
Walter Thiede  
James Veum  
Gregory C. Smith

**Class of 1951**  
John Allen  
Paul Ambro  
Edgar H. Auerswald  
John Baier  
Duane L. Block  
John F. Brown  
Lloyd Calvy  
Laurence T. Giles  
Helen Gruhl  
T. E. Henney  
Harold F. Ibach  
Don R. Janicek  
W. Donald Janney  
Alan H. Leong  
Alice McPherson  
Rita Grant Newman  
Robert J. Samp\*  
L. Smythe  
Charlotte Cohen  
Stern  
Harry E. Thimke  
John Thompson  
Herman Uhley

**Class of 1952**  
John A. Arkins  
Donald Lieberman  
Baldwin E. Lloyd  
John Rennebohm  
George W. Savage  
Benjamin Schuster  
Gwendolyn Smythe

**Class of 1953**  
Gene Armstrong  
Nathan Cohen  
Florence Johnson  
Eid

Maurice C. Farrar  
Melvin Griem  
Sylvia F. Griem  
Frederick H. Goetsch  
Richard E. Hunter  
Lyle L. Olson  
Forrest Fred  
Schroeder  
Roland H.  
Shamburek  
William J. Smollen  
Jack Spector  
Gerhard W. Tank  
Harry J. Watson, Jr.

**Class of 1954**  
E. B. Eastwood  
Charles H. Eid  
Richard Franklin  
Rhoda E. Johnson  
Leah Hiller  
Lowenstein  
Rudolf W. Matzke  
Marvin Poll  
Marvin Roesler  
Mark W. Shulkin

**Class of 1955**  
Glenn Baumbblatt  
Robert O. Brown  
Robert F. Douglas  
Armin Fuhlbrigg  
Donald M. Monson  
John B. Rockey  
Calvin E. Schorer  
R. E. Skupniewicz  
George G. Stebbins,  
Jr.  
Eugene L. Watson

**Class of 1956**  
Joseph Baer  
Robert Edland  
LaVern Herman  
John A. Koepke  
Milford S. Ofstun  
Carl F. Schmidt

**Class of 1957**  
Jack Edson  
Theodore Fox  
Leslie Langolis  
Sanford Mallin  
William H.  
Nicholaus  
Ethan D. Pfefferkorn  
John F. Simpson  
E. Robert Taske

**Class of 1958**  
Dorothy Marie Barbo  
Herbert M. Gahr  
Gordon Grossman  
H. Douglas Jameson  
Kenneth Lerdaahl  
Gordon Lee McComb  
P. O. McCormick  
John Mielke  
Roger D. Niehoff  
Gerald E. Porter  
Henry C. Rahr  
Robert D. Schmidt  
Raymond Stecker  
James W. Tanner  
David Westring

**Class of 1959**  
Michael J.  
Baumbblatt  
Charles J. Johnson  
Frederick Melms  
Leroy Rhein  
Mona Kaufman  
Stern

William S. Haynes  
William A. Hilger  
Frank M. Hilpert  
Glen S. Hogle  
Norton R. Humphrey  
Calvin L. Hunt  
Walter A. Huttner  
T. L. Hyde  
Arnold Iglaue  
Ferdinand C.  
Jacobson  
William P. Keiss, Jr.  
David C. Lane  
William E. Leede  
Nicholas Lentini  
Jose E. Lopez  
John M. Lynch  
John P. Lynch  
Laurence K.  
MacDaniels  
James W. Manier

E. Wayne Martz, Jr.  
Mabel G. Masten  
John McAreny  
Carolyn Moore  
McCue  
Forde A. McIver  
Peter Midelfart  
L. J. Midelfort  
Dwain Mings  
William W. Moir  
Donald E. Olson  
Cyrus Partington  
Charles M. Polan  
Reno R. Porter  
Henry H. Reed  
Maurice R. Ritchter  
Hunter H. Romaine  
Alexander T. Ross  
Everett N.  
Rottenberg  
Paul F. Sader

Harry Salzer  
Ursula Sanders  
L. L. Shamburger  
Adolph Shor  
Leo Smyth  
Samuel S. Spicer, Jr.  
Stonewall B.  
Stickney  
James Thompson  
Jean E. Toneray  
Vernon C. Turner  
Gilman Tyler  
Victor M. Vaughan  
James E. C. Walker  
C. P. Wangeman  
Francis S. Williams  
John M. Wilson  
Isabel J. Wolfstein  
Robert B. Woodhull  
Blandina Worcester

## Faculty

Edwin C. Albright  
Maxine Bennett  
Raymond R. Brown  
George Calden  
Paul Clark  
Helen Crawford  
Seymour B. Crepea  
Anita Ergang  
Alfonso Falcone  
William F. Fey  
Sally Gane  
David T. Graham  
Joseph M. Green

Norman S. Greenfield  
Henrik Hartman  
Charles Heidelberger  
R. C. Herrin  
Manucher J. Javid  
J. D. Kabler  
Maragret Kohli  
Eleanor M. Larson  
William C. Lewis  
F. Gilbert McMahon  
Elizabeth C. Miller  
James A. Miller  
John F. Morrissey

Leslie A. Osborn  
Charles Seastone  
Henry Suckler  
Benton Taylor  
Horace K. Tenney  
M. C. Thomas  
Hartwell G.  
Thompson  
Alice A. Thorngate  
Halvor Vermund  
Durad Walker

## University Hospitals Experience Increased Occupancy

The 1959-60 fiscal year which ended June 30, 1960, witnessed a steady increase of patients at University Hospitals. The number of admissions to the hospital (14,916) represented an increase of 2.6% over the previous fiscal year and is the highest number of annual admissions since 1955. A total of 196,435 patient days of care were rendered in University Hospitals during the past year. This figure is a 2.9% increase over the previous fiscal year. A total of 97,977 out-patient visits during 1959-60 represented a 9.5% increase. Commenting on these comparative statistics, Mr. Edward J. Connors, Superintendent of the Hospital, indicated: "The increased utilization of University Hospitals is an encouraging sign; coupled with the new rate structure which was instituted in January, 1960, this increased occupancy has provided a stabilized financial situation. It is hoped that this will allow the hospital to move ahead on much needed patient care furnishings and equipment."

The remodeling program which was inaugurated by the appropriation of \$100,000 during the 1959-60 legislative session is progressing. The architectural firm of John J. Flad and Associates has been selected to plan and design the remodeling of the old units of University Hospitals.

Mr. Connors has also announced the appointment of John Russell as an Assistant Superintendent of University Hospital. Mr. Russell has been an Assistant at Evanston Hospital, Evanston, Ill., and will move to Madison early in December.

## Former Interns & Residents

George Ablin  
Rovelle H. Allen  
Robert W. Bedinger  
Robert Beyer  
Sue Hadley Biberman  
Walter Blount  
Alan B. Bond  
Elmer I. Bruce

E. Murray Burns  
Miriam W.  
Carmichael  
E. G. Clahassy  
Phillip M. Cornwell  
Marcus E. Cox  
F. G. Drischel  
Dan S. Ellis

Merritt W. Foster  
N. A. Gelfman  
John A. Gius  
Edward E. Haddock  
Merel H. Harmel  
Herbert Hatem  
Gordon R. Harrod  
Robert Hayes



**HERMAN WOLF**, '34, who has been a staff psychiatrist in the out-patient department of the Eastern Pennsylvania Psychiatric Institute at Philadelphia, is now the head of the follow-up clinic. In addition to his regular duties, he will supervise the psychiatrists assigned to the clinic, as well as the resident staff and the psychiatric social worker. He also has an appointment as instructor in Psychiatry at the Woman's Medical College in Philadelphia.

**CAPT. AND MRS. NACHEFF (NATHANIEL AND REGENE)**, '59, proudly announce the birth of their second child, Maurina on Aug. 27. The baby weighed in at 6 lbs. 15 oz. The Nacheffs are now making their home in Mill Valley, Calif.

**JOHN A. BUESSELER**, '44, stepped into the Alumni Office when in Madison on a vacation. He is Chief of Ophthalmology, at the University Medical Center in Columbia, Missouri, and at present Acting Chairman in Surgery. Missouri is in the process of erecting a 35 acre Medical Center with \$15 million worth of buildings.

From a publicity release stating that Dr. H. Wm. Harris has been named Professor and Chairman of the Department of Medicine, The Woman's Medical College of Pennsylvania, we learned that **MRS. HARRIS**, the former Margaret Ann Roberts, '46, is now living in Merion, Pennsylvania. The Harris family consists of three young sons. They formerly lived in Salt Lake City, Utah, where the male Dr. Harris was with the University of Utah and the V.A. Hospital in that City.

**GEORGE H. KAKASKA**, '53, and family enjoyed a vacation in Jamaica this summer. Dr. Kakaska mentions that skin diving for coral is a favorite pastime, but he doesn't say whether he participated. However, they did enjoy a raft trip down a tropical river. Jamaica, with a year-round temperature of 72° sounds like an ideal vacation spot.

**MARY (COENEN) CHAMBERLIN**, '44, was a summer visitor in

Madison. She reports her husband is with Merck, Sharpe and Dohme and they are living at 2028 Hilltop Road, Westfield, New Jersey. She reports six children, ages, 10, 9, 6, 5, 2 and 1 and an interest in returning to the practice of medicine.

Since graduating in 1956, **LEE COHN** has completed a one-year internship at Charity Hospital in New Orleans and a three-year residency in psychiatry at the Shepard and Enoch Pratt Hospital in Towson, Maryland, where he is now on the staff.

**CHARLES SCHOENWETTER**, '57, who recently accepted an appointment as Clinical Instructor in Pediatrics at University Hospitals, is apparently sold on the city of Madison. After graduation, he interned at Madison General Hospital, took a two year residency in Pediatrics at University Hospitals and is now in the practice of pediatrics with **Dr. Richard Anderson**, '47, in Madison. Incidentally he also married a Madison girl.

**CLARENCE J. KLUCK**, '51, recently finished a residency in Internal Medicine Ohio State Medical School and is planning to enter group practice in Detroit. Dr. Kluck who lives at 28811 Lathrop Blvd., Lathrop, Michigan, has two children, a boy, 4 and a girl, 2½.

One of Uncle Sam's boys, **DONALD M. MONSON**, '55, is currently stationed at Ft. Jackson, South Carolina, and is interested in contacting Wisconsin graduates in the area. The welcome mat is out to all. His address is 4757 Reamer St., Columbia, South Carolina. Prior to joining the armed forces he had completed a residency in Radiology at the Harper Hospital in Detroit and had been certified by the American Board of Radiology.

Congratulations are in order for **JAMES D. WHIFFEN**, '55. Announcement was recently made of his engagement to Arlis Edgington, of Los Angeles, Calif. Dr. Whiffen, who interned at Ohio State Hospital, is now a resident in surgery at University Hospitals. He served as a lieutenant in the Navy Medical Corps for two years as a surgeon

on the USS Philippine Sea in the Pacific.

Hot where you are? **R. G. EDMONDSON**, '54, tells of the hottest day since 1874 in Utah—temperatures reached 107°, but the humidity was only 20%. Dr. Edmondson is spending a year in hematology with Maxwell Wintrobe as a Fellow, and enjoying it very much. He plans to practice next year, location still not clear.

**WM. A. OLSON**, '32, who has delivered more than 4,000 babies since he established his medical practice at Greenwood, Wisconsin, over a quarter of a century ago, was recently honored by more than 400 persons at a ceremony in his honor. A letter from Governor Gaylord Nelson praising Dr. Olson for his many years of services as a general practitioner was read at the ceremony attended by the first baby he delivered, the first set of twins delivered and by the parents of the 4000th child.

**GEORGE C. NITZ, Jr.**, '54, has been appointed a resident in Ophthalmology at the Presbyterian Medical Center in San Francisco, Calif. The Presbyterian Medical Center took over the former San Francisco Stanford Hospital and all of its facilities and plans to build around the former Stanford medical staff.

**CHARLES FINN**, '43, of Milwaukee, was one of a team of 36 surgeons from the United States who took part in a postgraduate course in "reconstruction Surgery of the Nasal Septum and External Pyramid" at the Universidad Nacional Autonoma de Mexico this past July.

**MARTIN L. JANSSEN**, '59, has joined his father-in-law in practice at the Roche-a-Cri Clinic at Adams, Wisconsin, after finishing his internship at St. Luke's Methodist Hospital in Cedar Rapids, Iowa.

**B. KENNETH LOVELL**, '36, is now associated with the McAllen Radiological Clinic in McAllen, Texas. Dr. Lovell, who received his residency training in Radiology at University Hospitals where he also served as instructor has been as-

(Continued on Page 12)



sociated with the Southwestern Medical School of the University of Texas for the past several years.

**GEORGE MAGNIN**, '46, a preceptor with the Wisconsin Medical Center at the Marshfield Clinic, became a Fellow of the American College of Physicians at a meeting of the group at San Francisco in May.

**BERNARD L. KLIONSKY**, a former intern at University Hospitals is now associated with the University of Kansas Medical Center as Assoc. Prof. of Pathology. Extremely active in research, he invented a new cryostat to be used on the application of the refrigerated microtome in surgical pathology. Dr. Klionsky is now the father of four children.

**PAUL H. REITMAN**, '40, moved from Chicago to Michiana Shores, New Buffalo, Michigan, but we have no details about the move.

A loyal Alumnus from California sent us the following two news clippings from San Francisco newspapers. Thanks!—whoever you are.

A 1951 graduate, **HERMAN UHLEY**, was recently honored by the California State Junior Chamber of Commerce as one of five outstanding young men of the year. He was cited for his original research into the causes and treatment of heart disease. A specialist in cardiology and internal medicine, he is on the staffs of Mt. Sinai Hospital, San Francisco General Hospital and San Francisco State College and has contributed much to studies of electrophysiology of the heart. He is married and has three daughters. He and his family live at 116 Jordan St.

**CAROL BAHCALL**, '51, may at this time, be running a leprosarium

in the Indonesian tropics—one of many projects set up by the staff of the SS Hope. Dr. Bahcall, a Berkeley, California, dermatologist, is one of four women among the fifteen physicians to sail in September from San Francisco on the mercy ship. The newspaper clipping reporting on Dr. Bahcall is a wonderful tribute to a woman with ideals which make her relinquish a thriving practice and sign up with Hope. Part of her internship was spent at Louisiana's Carville leper colony. Alumni congratulations to Dr. Bahcall in her efforts to help others to help themselves.

**JOHN B. YOUMANS**, a 1915 graduate of the University with a B.A., a M.S. in 1916, and an M.D. from Johns Hopkins in 1919, was recently appointed Scientific Director of the American Medical Association.

\* \* \*

#### FACULTY IN THE NEWS

**BEN PECKHAM**, '41, Professor and Chairman, Gynecology and Obstetrics, has been appointed Chairman of the National Board Test Committee for Obstetrics and Gynecology.

**HAROLD RUSCH**, '33, Chairman and Professor of Oncology, attended a meeting of the International Union Against Cancer in Japan in October. He is one of the representatives from the United States on the International Commission of Cancer Research. Following this meeting he attended a conference on cancer in Bombay, India.

**NATHAN J. SMITH**, '45, presented a paper on "Metabolic Studies of Tryptophan in Patients with Congenital Hypoplastic Anemia and other Refractory Anemias in Childhood" at the VIII interna-

tional Congress of Hematology, held in Tokyo, Japan in September.

**CLINTON N. WOOLSEY**, Professor of Neurophysiology, participated in two European International Symposia on the nervous system during the month of October. He represented neurophysiology and discussed research on the limbic cortex at an Interdisciplinary meeting at UNESCO House in Paris, and attended the second meeting of the International Brain Research Organization (UNESCO). He also took part in a symposium on the cerebral cortex at the first scientific meeting of the World Federation of Neurology in Lisbon, Portugal.

**CHARLES W. STOOPS, Jr.**, '42, Clinical Instructor in Medicine, took office October 1 as President of the Dane County Medical Society.

**VAN POTTER**, Professor of Oncology, in the author of a recently published book, entitled "Nucleic Acid Outlines," Vol. 1, on the chemistry and metabolism of nucleic acid.

At the invitation of Evans Ltd. of Liverpool and London, England, **O. O. MEYER**, '26, Chairman of Department of Medicine, will take part in a Symposium on Anticoagulants on November 18 and 19 at the Royal Society of Medicine in London. He will preside as Chairman of one of the one-half day sessions of the two-day symposium and will summarize the discussions of that period.

The University of Wisconsin Press recently announced that **PAUL CLARK**, Emeritus Professor of Medical Microbiology, has written a book on "Pioneer Microbiologists of America" which should be off the press sometime in January, 1961.

#### *Wisconsin Medical Alumni Assn.*

University of Wisconsin Medical School  
418 North Randall Avenue  
Madison 6, Wisconsin

Non-Profit Organ.  
U. S. POSTAGE

**PAID**

Madison, Wisconsin  
Permit No. 658