

MEDICAL ALUMNI NEWSLETTER

Reunioning Classes

The City of Madison welcomes you! The University of Wisconsin welcomes you! And certainly the Medical Alumni Association welcomes you.

The City of Madison would like to show you what a cosmopolitan city it has become—the University of Wisconsin would like to show you its tremendous growth in size, both in personnel and buildings—and the Alumni Association would like to show you the Library site.

The program arranged we think will interest you. It combines three guest speakers of national repute, faculty presentations, short talks by class representatives with a bit of reminiscing with Dr. Paul Clark. The evening program of social hour and dinner dance will feature the awarding of the Medical Alumni Citation and the Emeritus Faculty Awards.

Below is listed a complete program for the day, but in addition we would like to call a few pertinent facts to your attention.

Arrangements will be made to clear an area for parking in the parking lot on Randall Ave.

The site of the Library building will be staked out with a sketch of the building and a map of the Medical Center showing the Library's proximity to the hospital exhibited on the porch at 418 N. Randall Ave. (Right next to the parking lot.) Time will be allowed during the day for your visit to the site.

Senior medical students and their wives will be the guests of the Alumni Assoc. at the evening social hour and dinner dance.



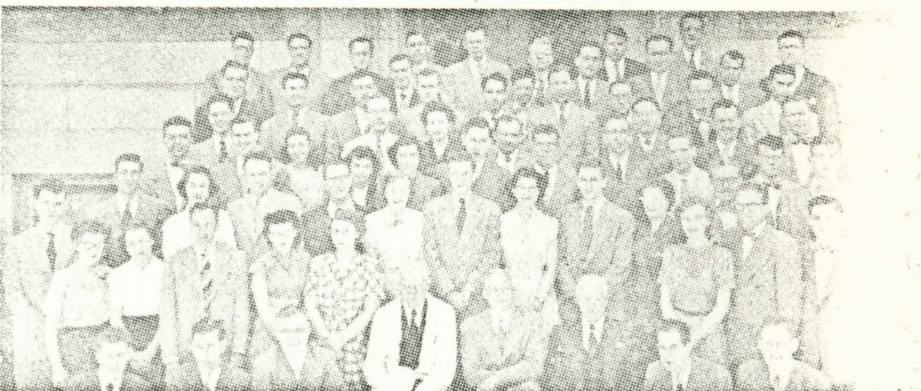
Class of 1930



Class of 1935



Class of 1940



Class of 1950

GUEST SPEAKERS

for

ALUMNI DAY



Dr. Richard W. TeLinde



Dr. Robert D. Wright

Dr. Richard TeLinde, who has been Professor in Gynecology at Johns Hopkins University and Gynecologist-in-Chief at Johns Hopkins Hospital since 1939, will be the guest speaker at the John Harris Lecture at the morning session. He will speak on "The Endometriosis Story."

The afternoon program will include talks by **Dr. J. Garrett Allen**, Professor and Chairman of Surgery at Stanford University, Palo Alto, Calif. and **Dr. Robert D. Wright**, Asst. Medical Director, Office of Vocational Rehabilitation, Washington, D. C. Dr. Wright was graduated with honors from the University of Wisconsin with a B.A. and Masters degree in Medical Science. He holds an M.D. degree from Washington University and a degree as Master of Public Health from Johns Hopkins. He will report on his work in the nation-wide development of policies and programs in health and medical areas of the state-federal program of vocational rehabilitation.

Dr. Allen, who accepted the position as Professor and Executive of the Surgery Dept. at Stanford within the past year or two, is a graduate of Harvard Medical School. He will speak on "Advances and End Results in Treatment of Cancer of the Breast."

The title of **Dr. Paul Clark's** talk will be "Our Attic Medical School."

TIME: Friday, May 20, 1960

PLACE: S.M.I. Auditorium

Registration

9:00 a.m.—210, S.M.I.

Morning Program

Dr. Robert Schilling, Assoc. Prof. Medicine

Dr. O. O. Meyer, Prof. and Chairman, Dept. of Medicine

Dr. R. W. TeLinde, Prof. of Gynecology, Johns Hopkins Univ.

Dr. Paul Clark, Emeritus Prof., Medical Microbiology

Dr. Charles Heidelberger, Prof., Oncology

Business Meeting

LUNCHEON

Afternoon Program

Dr. J. Garrett Allen, Prof. and Chairman, Surgery, Stanford University

Dr. Robert Wright, Asst. Medical Director, Office of Vocational Rehabilitation

Class Representatives—Reunioning Classes of 1930, 1935, 1940 and 1950

SOCIAL HOUR AND DINNER DANCE—6:00 p.m.

Place: East Side Businessmen's Club

Program will feature the awarding of the Medical Alumni Citation, and the Emeritus Faculty Award.

Wisconsin Medical Alumni Newsletter

published January, April, July and October by the

WISCONSIN MEDICAL ALUMNI ASSOCIATION, INC.

418 North Randall Avenue
Madison, Wisconsin

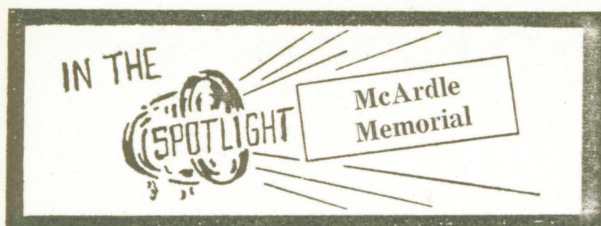
ALUMNI OFFICERS

A. A. Quisling, M.D., '34	<i>President</i> Madison
Mischa J. Lustok, M.D., '35	<i>President-Elect</i> Milwaukee
Albert Martin, M.D., '35	<i>Directors</i> Milwaukee
A. R. Curreri, M.D., '33	Madison
Eugene Nordby, M.D., '43	Madison
Wm. B. Hildebrand, M.D., '39	Menasha
J. Z. Bowers, M.D., Dean U. W. Medical School	<i>Ex Officio</i> Madison
Einar R. Daniels, M.D., '34	<i>Past-President</i> Milwaukee
Robert C. Parkin, M.D., '43	<i>Secretary-Treasurer</i> Madison

Editor
Robert Samp, M.D., '51
Associate Editor
Mrs. Marcella Hilgers

Alumni dues \$5.00 per year.

(Your dues make this publication possible—
Have we received your check?)



In 1935, Michael W. McArdle, an alumnus of the University of Wisconsin Law School and prominent Chicago financier, died of cancer. He named the University of Wisconsin one of the beneficiaries in his will, with the stipulation that the money be used for the study of cancer. The total McArdle bequest, which amounted to more than \$100,000, together with a federal PWA grant, enabled the Medical School to build the McArdle Memorial Laboratory.

When the laboratory was first erected in 1940, its staff included Dr. Harold P. Rusch, Dr. Carl A. Baumann, Dr. Van R. Potter, and five research fellows and assistants. It was one of the first laboratories set up in this country for the specific purpose of studying cancer. Today this laboratory is recognized throughout the world for its contributions in cancer research and in the training of scientists for medical research in cancer and allied fields. The present staff, under the direction of Dr. Rusch, includes 8 senior medical scientists, 20 postdoctoral fellows, 19 graduate students studying toward the Ph.D. degree, and laboratory technicians and other personnel to bring the total staff to about 95. More graduate students (25) have received the Ph.D. degree at the McArdle Memorial Laboratory since its beginning than have been graduated from any other cancer research laboratory in the country. Two of these have remained at Wisconsin, as members of our senior staff, but all the rest have accepted responsible positions elsewhere.

Various aspects of cancer research have been studied intensively at McArdle—carcinogenesis, chemotherapy, metabolism of cancerous tissues, etc. Recent valuable findings include the discovery of the tumor-inhibiting fluorinated pyrimidines, the observation of a new metabolite formed during the genesis of hepatic cancer, factors affecting the growth of cells in tissue culture, and basic studies on growth and differentiation in a simple organism. In addition, the McArdle staff plans to initiate research programs in two further promising areas—the genetics of cancer and the association of viruses with some cancers.

The McArdle Memorial Laboratory was originally established as the result of a gift, supplemented by a federal grant. The present

financial support of this laboratory, which now amounts to nearly half a million dollars a year, also comes primarily from various gifts and grants. All these funds and the energies of the entire staff are directed toward speeding up the eventual solution of the cancer problem.

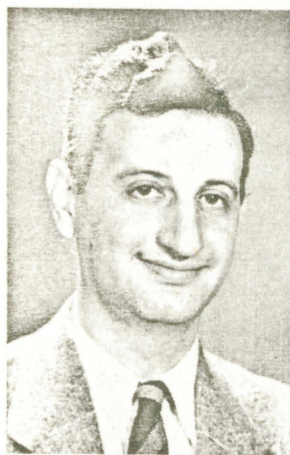
New Cancer Research Center

Funds for construction of a new cancer center at the University of Wisconsin—at an estimated cost of \$2 million—may be realized from an amendment included in the House of Representatives appropriation bill for the fiscal year of 1961. The amendment offered by Rep. Melvin R. Laird of Marshfield, Wis., a member of the appropriations subcommittee, earmarks \$5 million for emergency construction of facilities for cancer research.

The \$2 million which may be allotted to the University will cover the entire cost of the structure. The bill recently passed the House of Representatives and should experience no difficulty in passing the Senate, Rep. Laird said.

DR. CHARLES HEIDELBERGER

Receives Lifetime Grant of \$388,334



Dr. Charles Heidelberg, a U. W. Medical School scientist, was recently given a \$388,334 lifetime grant by the American Cancer Society to continue his research into the causes and cures of cancer. The Society's award permits Dr. Heidelberg to continue to devote his major effort to cancer research until retirement age. He is the eighth scientist to be selected for an American Cancer Society professorship in research and the second from the University of Wisconsin, the only University to be so honored. Dr. James M. Price, who is working on the problem of bladder cancer received a similar award in 1957.

Dr. Heidelberg is an internationally-known expert on the chemical therapy approach to treatment of cancer. Working in conjunction with Dr. Robert Duschinsky of Hoffman-La Roche, Inc., he synthesized 5-fluorouracil, hailed as a major breakthrough in cancer drugs. The drug is designed to inter-

fere with the vital nucleic-acid manufacturing system of growing cells on the theory that these might be more vulnerable in cancer than in normal cells. Research in the McArdle Laboratories with radioactive tracers has proved the theory.

Clinical testing of the drug under the direction of **Dr. Anthony Curreri** and the staff of the Cancer Research Division at University Hospitals has shown that certain tumors of some patients respond favorably to these drugs while others appear unresponsive.

Dr. Heidelberger joined the staff of McArdle Laboratories in 1948. He previously had served as research chemist in the radiation laboratory at the University of California. He completed his B.S., M.A. and Ph.D. degrees at Harvard.

Medical Alumni Citation and Emeritus Faculty Award

Two awards, one honoring an internationally known gynecologist and one a highly respected faculty member, will be presented to the recipients at the evening program on Alumni Day, May 20. **Dr. Richard W. TeLinde** of Johns Hopkins Medical School will receive the second Medical Alumni Citation and **Dr. Walter Sullivan**, Emeritus Professor of Anatomy at the University of Wisconsin will be given the Emeritus Faculty Award. Both are being honored for their many contributions to medical education and research.

Dr. TeLinde, a 1917 graduate of the University of Wisconsin who transferred to Johns Hopkins where he received a degree in Medicine in 1920, is one of the outstanding gynecologists in the country. His present title is Professor in Gynecology at Johns Hopkins University and Gynecologist-in-Chief at Johns Hopkins Hospital. Well-known as a teacher and author, his publications include a number of excellent articles on cancer, particularly early uterine cancer and he is the author of the textbook used in the teaching of gynecology. He holds membership in many organizations, both honorary and professional, and was President of the American Gynecological Society in 1953. He will also present one of the principal lectures on the Alumni Day program.

Dr. Walter Sullivan will be remembered by the majority of the Alumni for his many years in the Department of Anatomy, which department he headed until his retirement in 1955. **Dr. Sullivan** came to the University of Wisconsin in 1920, along with **Dr. Theodore**

Bast and **Dr. Frederick Geist**, at a time of great expansion in the department. **Dr. Sullivan**, who now lives in Claremont, California, recently replied to our request for information about his activities and reports on them in another article in this magazine.

Alumni Day Class Representatives Chosen

Dr. Robert Samp reports that the reunioning classes of 1930 and 1935 have chosen two brothers as their class speakers while the classes of 1940 and 1950 have not yet definitely decided on a speaker. That decision will be made within a few days, but unfortunately too late for inclusion in the Newsletter.

Pictures of the reunioning classes taken at the time of graduation are shown on another page. You might like to make a few "Now and Then" comparisons—the fellow next to you probably looks a bit older.



Dr. Howard Lee, in accepting for the class of 1930 promises to offer a few pearls on allergic reactions to drugs and says "... Perhaps a broad title of 'Drug Hypersensitivity' might be used and certainly one can do little but sensitize in fifteen minutes. I want to thank the Class of '30 for contributing to my early morning insomnia until May 20." **Dr. Lee** has been practicing in Milwaukee since 1947. He is in internal medicine.



Dr. Herbert C. Lee, representing the Class of '35, has been with the Department of Surgery at the Medical College of Virginia Hospital since interning there in 1936-37. He promises an interesting fifteen minute talk on "Twenty-five Years of Progress." **Dr. Lee** raises orchids and children — four of them — and collects stamps for a hobby.

And Then -

Being rather inquisitive by nature we got to wondering one day what happens when one phase of a man's life is finished and suddenly he finds himself on the retired list. We thought that anyone who had offered so much in the way of teaching and research would not be content to merely spend the rest of his life in a well-deserved rest. To find the answer we simply asked some of our Emeritus Faculty their views on the subject and found the answers very interesting.

Dr. Harold Bradley, who with Mrs. Bradley moved back to his old home in Berkeley, Calif. after retirement from the Physiological Chemistry faculty in 1948, entered a field that had always been very important in his life—the preservation of our Scenic Resources in the Forestry Service Wilderness Area and in our National Parks. “The Sierra Club—founded by John Muir, whom I knew as a boy—was the oldest and the most active along this line. I have been very busy with the problems it undertakes, ever since. I am a Director, and have recently completed a two-year term as President. More important, it offers the opportunity to work with others dedicated to the proposition that some souvenirs of America the Beautiful must be handed on unspoiled to our oncoming generations.”

Dr. and Mrs. Bradley have recently returned from a short trip to Thailand—where his grandfather Dr. Dan Bradley worked as a medical missionary from 1835 to 1874. He was asked to go to Bangkok to help the Thai government determine whether or not to develop a National Parks system. They spent a month and a half in Thailand and the trip ended most excitedly with a delightful audience with their majesties, the King and Queen. He ends his letter “with best regards to the Dean—and to the continued success of the Medical School. Warm greetings also to all my friends and colleagues who remain at Wisconsin.”

Instead of “retirement” it seems the **Walter Sullivans** have taken up “wandering” since leaving the Department of Anatomy and Madison in 1955. Dr. Sullivan reports that they had planned to go directly to California to join three of their children, but it was not to be. Dr. Buchanan of Colorado wanted to take a leave of two years and asked him to work with his staff during his absence. “In 1957 the Army Medical Service School at Fort Sam Houston asked me to develop further the laboratory facilities in anatomy so we detoured to San Antonio. Here we were of the army but not in the army, which is a very advantageous position.

Last spring I decided it was time to sharpen up my golf game and to get the most out of a fine set of clubs that the Class of '58 had given me, so we came to California, and settled in Claremont, a city of about 11,000 with six colleges. The instructors in Zoology at Pomona College have made me feel at home in their laboratories and I spend some time there.

“There are many Wisconsin Alumni in this area. Some we have seen and the others we shall see. We hope many of you will visit California and the Sullivans in the near future.”

We had a very charming letter from **Mrs. J. A. E. Eyster** in answer to our inquiry about Dr. Eyster's work with the measuring of tides in the Florida area. Dr. Eyster, who retired in 1952 from the Department of Physiology, became interested in the tides in the vicinity of Ft. Myers, Florida, where he and Mrs. Eyster have lived until his death last March 5. The Weather Bureau was very interested in his report on rainfall and the measuring of tides and has since set up a system for reporting them, so Dr. Eyster seems to have started something.

Dr. Eyster, who was on the faculty of the Medical School for nearly 41 years, is well-remembered for his inspired graduate and medical teaching and for his devotion to the advancement of medicine through animal research.

Dr. Ralph Waters, who retired in 1949 from the Department of Anesthesiology, reports in from Orlando, Florida. “As to our ‘retired’ state Mrs. Waters and I are as busy as we were in Madison—only the activities are different. Much cutting of fireplace fuel, picking enough citrus fruit for our daily needs, reading books which didn't get read in days gone by, or re-reading books which we liked but never had time to go back too.” Several retired faculty members from the U. W. are regular attendants at an afternoon pow-wow several times a week and there is a fine University Club in Winter Park where they occasionally attend meetings. “We can only say that we are happy here and all for ‘retirement,’ and recommend it to any prospects who are so disposed. With best wishes to the Newsletter and to the Alumni Association.”

Of course, **Dr. Paul Clark** who officially retired in 1952 from the Department of Medical Microbiology, has maintained his Madison residence and remains as active as ever. His book, “Chronicles of Early American Microbiology” will be published by the U. W. Press towards the end of 1960.

Progress Report

Inspection of the site, elevations of the building and preliminary plans are not all we had hoped to show you on Alumni Day. But we can go no further without an additional \$125,000. We need \$550,000 to begin construction. \$425,000 is at hand in gifts and pledges. There is still time to reach the goal by Alumni Day—May 20.

Pledges are payable over three years and gifts to the Library Fund are tax deductible. Make your pledge in whatever amount you can afford now. Every year of delay in building adds 5% to the cost.

The reunioning classes, 1930, 1940, 1950 and the Silver Anniversary class of 1935, have issued a challenge. By Alumni Day they plan to be the pace setters in total amount contributed and in percentage of class contributors. Any takers?

Howard Correll, '35, has made an initial contribution in memory of his classmate, William Nosik, and urges the '35 class members to designate their contributions similarly.

You may wish to honor other classmates, teachers or relatives; for example F. T. H' Doubler, '48, has taken leadership in having class contributions designated in memory of Bill Bleckwenn. Friends and classmates of Bob Gavin, '43, have designated contributions in his memory. Former students of Dr. Walter Meek have begun a fund in his honor and the friends, family and former students of Dr. T. H. Bast are making library contributions in his memory.

Do your part now and by Alumni Day we can give the "go ahead" for the final plans and cost estimates.

If you have given and can upgrade your contribution it is vitally needed. If you have not given join your classmates in repaying your debt to your school and in providing a vital facility for future classes.

"Books are the lifestream of the Medical School and the Library is its heart."

Wm. S. Middleton, M.D.

THE TOP TEN TOTALS

Faculty (including Alumni members)	\$22,170
1933	11,190
1943	10,480
1935	10,122
1932	9,095
1936	8,385
1934	8,270
1930	6,875
1929	6,498
1937	5,950

CHARTER MEMBERS

Bronze Plaque Alumnus

Harold Bishop	Melvin Huth	Maurice Richardson
D. B. Blanchard	Roland Jacobson	Ed. P. Roemer
Alexander Braze	C. V. Kierzkowski	Florian Santini
Benj. Brindley	William Konnak	William Shanahan
Henry Brosin	Robert Krohn	Melvin Stuessy
Harwin Brown	Howard Lee	Marion Swigart
Charles Christenson	Mr. & Mrs. J. Levin	E. E. Tennant
Paul Collopy	Norman Lindquist	Oliver Tjoflat
A. R. Curreri	Albert Martin	Robert Turell
Einat Daniels	Ovid Meyer	Lucy Vernetti
Frederick Davis	Edward Mielke	Ray Welbourne
Helen Dickie	Irving Moskowitz	Marvin Wells
Richard Dickman	Jerome Paulson	Anton Wellstein
C. R. Dix	Herbert Pohle	Frank Weston
Adam Earney	Karver Puestow	Cleveland White
Frances Hellebrandt	Hans Reese	Edward R. White
In memory of Robert Gavin, M.D.		Herman Wirka
In memory of Jack Geisenfeld, M. D.		
In memory of John W. Gilmore, M.D. (Wm. Gilmore)		
In memory of Maurice J. Ansfield and Mrs. Hazel M. Price		
In memory of Carl E. Lee (Howard Lee)		
In memory of George Lemmer, M.D. (Kenneth Lemmer)		
In memory of Jean Louise Mayer (Dr. & Mrs. Hanno Mayer)		
In memory of Gunnar Quisling, M.D. (Abe. Quisling)		
In memory of Wm. J. and Clara Shapiro (Herman Shapiro)		
In memory of Edward D. Stanton M.D. (Mrs. E. D. Stanton)		
In memory of David & Gussie Zizmor (Judah Zismor)		
In honor of W. J. Meek		

Middleton Brown Derby Alumnus

John Adametz	Fred Gaenslen	John Morrison
Herb. & Katherine Aitken	Morris I. Gerner	David W. Ovitt
Jeanne Andrews	Jay S. Goodman	Edith Parkhill
Vernon Bass	Paul Goodman	Melvin G. Peterson
Roland Benson	Emily M. Gray	Ethan Pfefferkorn
E. & D. Betlach	Carl Greenstein	Wilson Phillips
Laura Bickel	Elizabeth Grim	Walter Rein
Roy Biehn	Oscar Hanson	James Russell
James Bingham	Philip W. Hardie	R. W. Schroeder
Edward Birge	John Harris	David Schuele
Norman Birkbeck	William Horowitz	Delbert L. Secrist
David Boyce	Adolph Hutter	Wm. L. Sprague
Sam Boyer	Robert Hyslop	Gilbert Stannard
Robin Buerki	Everett Johnson	Gordon Strewler
Ralph E. Campbell	Ervin C. Kaye	Robt. M. Sutton
K. K. Chen	Robert A. Kebbekus	Phillip Svec
Philip Christiansen	Martin Kein	Wm. J. Swansbro
Paul Clark	Charles Kempthorne	H. J. Tausend
Harold & Mary Coon	Martin H. Klein	Alban Tessier
Bradford Crandell	Homer Kohler	Caroline Thompson
Harry Culver	Chester Kurtz	Charles Trush
Eugene Dallwig	Frank Leitz	Robert Waffle
Adam Earney	Leonard Lovshin	Thomas Walsh
Stanley Edwards	Wm. Luetke	Anton Wellstein
O. M. Elkins	Mischa Lustok	Sidney Wynn
Silas M. Evans	Frederick Madison	William P. Young
Victor Falk	Florence Mahoney	Harold Youngreen
Harold Fishbain	Stevens Martin	
Ann Fred	F. O. Meister	
	John Miller	

Middleton Medical Alumnus

Emmett Ackerman	George Behnke	Peggy Bond
Eugene Adashek	Sam Behr	Charles R. Brillman
Alton Anderson	Joseph Behrend	Warner Bump
Henry Anderson	John Bell	R. C. Bunts
D. Murray Angevine	Douglas Bell	E. C. Burgess
Fred Ansfield	Herbert Benn	Marie Carns
John Armbruster	Robert Benson	Homer Carter
Mark J. Bach	John Berger	Sam Chapman
Raymond Baldwin	W. J. Berwanger	Howard Christensen
Herbert Bandell	E. C. Betlach	Norman Clausen
Paul Bassewitz	Harold Bishop	Patrick M. Cmeyla
S. R. Beatty	Phillips Bland	Vernon L. Cofer, Jr.
Irvin M. Becker	S. S. Blankstein	Royden Collins

John E. Conway
Harold Coon
Howard Correll
Wm. Crowley
John Curtis
R. J. Dancy
Adolph Dasler
F. J. Davis
Mathew Davis
Capt. C. T. Doudna
Harold F. Deutsch
C. M. Dobson
Marg. Doer-Muendel
Della Drips
Peter Duehr
Burnell Eckardt
Paul Edwards
Wilmer Edwards
Herman Eisenberg
James Evans
Richard Evans
Norman Fein
Selmer Feld
George Fiedler
George Finer
Milton Finn
Albert Fisher
Edward Fisher
Martin Fleigel
Hugh Fogo
Edward Foss
Ruth & Mark Foster
William Fox
Norman Franken
Meyer Friedman
Oscar Friske
John Frost
Everett Gage
Richard W. Garrity
Herbert Gasser
Alvin Gay
Morris Gerner
Herbert Giller
Robert Gilman
Benjamin Glover
Thomas Gocke
Morris Gold
Farrell Golden
Peter Golden
David Goldstein
Marvin N. Golper
J. H. Goodlad
Edgar S. Gordon
Norvan Gordan
Joseph A. Gosman
Gerald Gredler
James Green
Marvin Greiber
Erwin Grossman
Thorolf Gunderson
James Gunn
Horace Hansen
Ray Hansen
Harold L. Harris
Donald Hastings
Theodore Heller
Ann Henschel
Aaron Herschfus
Nels Hill
Clifford Hogenson
David Howell
Everett Humke
Kenneth Humke
Sidney Hurwitz
Volney Hyslop
Wallace Irwin
Sture Johnson
Merritt Jones
Charlotte Jordan
Milton H. Joyce

John A. Juhl
August Jurishka
Louis Kagen
Samuel Katz
J. E. Kaufman
S. Harvard Kaufman
Donald Kaump
John L. Keeley
Ralph Kennedy
Leslie Kindschi
A. C. Kissling
Roger Kjenvet
Walter Kleinpell
Irving Klitsner
John Koepsell
John Kreher
Raymond Kuhn
Palmer Kundert
Bert Lambrecht
Francis Larme
Harry Larson
Frank Larson
Roger Laubenheimer
Max Laven
Ben Lawton
Thomas Leonard
Roland R. Liebenow
Leo Lifschutz
Harold Lubing
Donald W. Maas
John MacGregor
Leslie MacNaughton
Ernest MacVicar
George Magnin
Harry Mannis
Ben Mannis
Arpad Masley
Charles Martin
Wm. B. Mautz
Michael McGarty
James McIntosh
C. W. McMoran
Dermont Melick
John Mendenhall
Wm. Merkow
Meryl Miles
Albert Miller
Robert Miller
Theodore Millman
Selby Mills
Paul W. Moen
Frederic Mohs
John H. Morton
Otto Mortensen
Gilbert Mueller
Martin Mueller
Arno Mundt
Earl Muntz
Robert Natelson
James Nellen
William A. Nielsen
Eugene Nordby
William Oatway
Henry Okagaki
May Davies O'Neil
Caroll Osgood
R. S. Overton
Wilbert Parker
John Parks
Ross Paul
Ben M. Peckham
Gordon Perisho
Frank Perlman
M. S. Peterson
Edward Phillips
Jerome Pizer
Dean Plazak
L. Pomainville
Rolf Poser
Sidney Posner

Charles Puestow
Ray Quandt
Robert Quinn
Rolf Quisling
Sverre Quisling
Milton Radenwan
Robert Ramlow
N. G. Rasmussen
Harvey Raszkowski
Herbert Raube
Thomas J. Rice
Shafik Richany
Michael Ries
Leonard Robbins
Robert Roessler
Sion Rogers
A. L. Rosenbloom
Madeline Roueche
George Rowe
Sidney Rubin
Ray. R. Rueckert
William Russell
Lester Salinsky
Robert K. Salter
Edwin Schalmo
Frank Scheible
Chas. E. Schmidt
Herbert Schmidt
Kenneth Schmidt
Henry Schmitz
R. C. Schmitz
Anton Schoenenberger
Raymond Schrank
Morris Schroeder
Isadore Schultz
Bernard Schwam
Maurice Seever
Elvira Seno
Lynn Seward
June Shafer
Betsey H. Shebesta
Emil Shebesta
William Sheehan
Joseph Shimp
Ned Shutkin
Carl Sibilsy
Eber Simpson
Wm. Smiles
Alexander Spooner
George Stebbins
Marvin Steen
Norman Steiner
John Steinhaus
Ralph Stevens
Clyde Stevenson
Berenice I. Stone
Joseph Stone
Aaron Sweed
John Talbot
Leslie Tasche
Joel Taxman
William Taylor
Ivan Taylor
Oscar Thoency
Madeline Thornton
Loron Thurwachter
Thomas Tormey
Robert Towle
Norbert Trauba
Frank Treskow
Perry Triggs
James Tuura
J. Kent Twetten
Bernice H. Tyner
Eugene Usov
Wm. F. Vaudrevil
William Wagner
Raymond Waisman
Willard Wall
Alfred Wallner

Judith Walton
W. L. Washburn
Robert W. Watson
Alice Watts
John Wear
John B. Wear, Jr.
Marie B. Webster

Frank Weeks
G. H. Wegmann
Arvin Weinstein
J. D. Weinstein
David Welton
Harold Wenger
Joseph Wepfer

Ralph Whaley
Raymond Whitsitt
Rodney Wichman
James Wilkie
D. L. Williams
J. H. Wishart
King Woodward

Other Generous Contributors by Classes

1910

Dexter H. Witte

1912

Harry R. Foerster
Franklin Nuzum
Anders Weigen

1913

H. C. Bumpus, Jr.
Nordahl O. Gunderson

1914

Frank B. Marek

1915

Alfred L. Mayfield
Leland S. McKittrick

1916

Harold D. Kerr

1917

Fred J. Hodges
Leslie L. McCoy
Hartwick M. Stang
Edward J. Van Liere

1918

Norton J. Eversoll
Elmer Severinghaus

1919

John W. Connell
Robert B. Montgomery
John Skavlem
Carl J. Weber
Cleveland J. White

1920

Arne Gorder
Roland Jacobson
Robert D. Millard
Robert H. Smuckler

1921

Margaret Craighill
Frances V. Herwig-Kupper
Norman Laske
A. L. Newcombe
C. K. Schubert
Eleanor I. Leslie

1922

Anthony Bianco
L. W. Gregory
James S. Hess
Homer D. Kesten
Albert E. Meinert
Lyle G. Phillips

1923

Mary R. Eleston
Clarence O. Heimdal
Robert L. Holcombe
Elizabeth Kundert
Fred C. Prehn
Charles B. Puestow

1924

Mark E. Nesbit
Gorton Ritchie
Elizabeth Rose
Roland J. Schacht
Henry L. Schmitz
Lazare M. Shapiro
Richard C. Smith

1925

Mead Burke
William H. Lipman
Edwin L. Prien
Raymond R. Richards
O. A. Sander

1926

M. O. Boundry
Ralph W. Garens
Merlyn G. Henry
Adolph C. Kammer
Joseph H. Marks
Dwight J. Moiser
Henry A. Romberg

1927

Myra E. Burke
John Crab
Margarete Hatfield
Harold L. Miller
Milton Senn
Arthur C. Taylor

1928

Milton Erickson
Frederic W. Haigh
Maurice Hardgrove
Paul H. Hemphill
John B. Hintz
M. O. Lundt
Traugott H. Nammacher

1929

David J. Ansfield
K. W. Emanuel
Hance F. Haney
Arthur Hansen
Sam L. Henke
Robert G. Hinckley
Theodore W. Oppel
David D. Ruehlman

1930

D. C. Beebe
Meyer S. Fox
Clifford Wiswell

1931

Thomas Burdon
William Clark
Harry Feldman
Edgar W. Huth
Leif H. Lokvam
Frank D. McCarthy
J. Stuart Moffat
Cecil A. Morrow
Carol M. Rice
Isaac J. Sarfatty
A. M. Schwittay

1932

Alois M. Bachhuber
Benjamin H. Brunkow
Lawrence L. Garner
Howard L. Hauge
Earl V. Hicks
Katherine Jackson
Lawrence W. Kaufman
John McCarter
Norman W. Paul

1933

E. W. Brott
Frank F. Gollin
Frederick Joachim*
Arno Leshin
Max W. Livingston
Edwin S. Sinaiko
L. F. Webster
David J. Zubatsky

1934

Norbert Barwasser
Stella I. Burdette
I. I. Cash
James H. Ewing
Bernard Friedman
Michael M. Karl
Jack J. Levin
Sam J. Lipkin
Norbert A. McGreane
Walter O. Paulson
Harold O. Schneider
John R. Smith
Albert Stahmer

1935

Ben J. Axel
Sidney G. Babbitz
H. R. Benson
Hubert D. Krieger
Curtis J. Lund
H. G. E. Mallow
Thomas J. Mathews
Betsy Owen Steele
Gilbert C. Tomskey
Joseph Weber
Robert D. Wright

1936

Louis L. Bensman

*Faculty

Donald S. Bolstad
Eleanor P. Cheydleur
William R. Ferguson
George H. Hess
Nathan Jacobs
Gregory P.
Langenfeld
Charles O. Olson
Emanuel M. Oxman
Walter J. Schact
Royal J. Westcott

1937

Ruth E. Church
J. W. Doolittle
E. G. Glenn
Nathan M. Grossman
Ralph Landes
James V. Lowry
Joseph Mufson
Harry K. Purcell
Jackman Pyre
Albert A. Sames

1938

O. A. Ellingson
Walter F. Kammer
Charles S. Kipen
Milton Lozoff
Hector C. Marsh
Harry R. Maytum
James Miller
Daniel N. Pickar
Robert W. Schneider
Mildred M. Stone*
Milton Zemlyn

1939

Harry Berland
C. M. Carney
Simon Cherkasky
Dann B. Claudon
Harvey Cooperman
Hervey Dietrich
Elmer F. Franseen
John Halbert
Roy A. Hulse
George W. Marbry
Philip H. Seefeld
Karl H. Stahmer
Nathan Steinberg
Frederick J. Stoddard
George R. Thuerer
Samuel G. Weisfeld
Harold J. Werbel

1940

G. J. Bachhuber
Jack S. Chudnoff
Theodore G. Lathrop
Menelaus P. Peters
Mary Rohr

1941

Bernard Hulbert
Sidney Z. Hulbert
Grace C. Kammer
Kenneth P. Knudtson
Edward L. Perry
Robert Randolph
Frederick Stare
Eleanor A. Waskow
Clayton Wheeler

1942

B. E. Douglass
Russel S. Pelton

Marvin F. Wells

1943

Barney B. Becker
Howard A. Bronson
Clarence P. Chrest
E. D. Detjen
A. A. Drescher
R. P. Embick
Ralph C. Frank
John Fulton
Francis E. Gehin
Norman M. Hankin
Richard J. Hennen
Carl E. Johnson, Jr.
Walter Luedtke
E. J. Netzow
Richard J. Rowe
Ruben Schmidt
Burton M.
Zimmerman

1944

G. F. Crikelair
Farrington Daniels,
Jr.
J. L. Daniels
Larry H. Hogan
William J. Little
Robert Lotz
William Randolph
Max M. Smith*
Charles H. Willison
Robert G. Wochos
Marshall L. Weber

1945

Homer P. Baker
David Bradley
Dean A. Emanuel
Avery C. Halberg
Gilman E. Heggstad
John M. Irvin
Edward Kass
Jean S. LePoidevin
LeRoy Misuraca
Henry A. Peters*
Ralph J. Schlaeger
Calvin F. Settlege
David J. Sievers
Keith B. Witte

1946

Julian E. Abrams
Melvin G. Apell
David S. Arvold
Alan B. Fidler
Herman P. Gladstone
Eldred F. Hardtke
Wells F. Harvey
J. Richard Johnson*
Alfred E. Leiser
Albert Liebman
Tim H. McDonell
Robert M. Schuyler
Paul E. Stange
Burton A. Waisbren
Ervin Teplin
Richard H.
Wasserburger*

1947

Hans Hartenstein
Thomas M. Haug
Soloman Kahn
George R. Kennedy
Merlin J. Olson

Royal Rotter*
Sigurd E. Sivertson
Donald Watzke

1948

W. S. Dietrichson
Roswell H. Fine
Richard B. Foe
Horace W. Gerarde
Clement H. Hickey,
Jr.
Donald R. Korst
Morris M. Meister
Marvin W. Nelson
John N. Richards
Chester Waits

1949

Harry D. Baernstein
Greta Camel
June A. Dvorak
Fred P. Krumenacher
Sherman R. Lee
A. S. Lieberthal
Bernard I. Lifson
Gilbert A. Reese
Charles J. Ryan

1950

Jeanne Anderson
Donald A. Franklin
Evan L. Frederickson
Gerald T. Jansen
Virginia Payne
Gregory C. Smith
Walter C. Southcott
Walter H. Thiede
James S. Veum

1951

John Allen
Paul Ambro
Edgar H. Auerswald
Duane L. Block
John F. Brown
Laurence T. Giles
Helen Gruhl
T. E. Henney
Harold F. Ibach
Don R. Janicek
Alan H. Leong
Rita Grant Newman
Robert J. Samp*
L. Smythe
Harry E. Thimke

1952

John A. Arkins
D. J. Freeman
Donald Lieberman
Baldwin E. Lloyd
George W. Savage
Benjamin Schuster
Gwendolyn Smythe

1953

F. Johnson-Eid
Maurice C. Farrar
Frederick H. Goetsch
Melvin Griem
Sylvia F. Griem
Richard E. Hunter
Forrest Fred
Schroeder
Roland H. Shamburek
William J. Smollen

Jack Spector
Gerhard W. Tank
Harry J. Watson, Jr.

1954

Gene F. Armstrong
Charles H. Eid
Marvin Poll
Marvin Roesler
Mark W. Shulkin

1955

Glenn Baumblatt
Robert O. Brown
Robert F. Douglas

Donald M. Monson
John B. Rockey
Calvin E. Schorer
R. E. Skupniewicz
George G. Stebbins,
Jr.

1956

Joseph Baer
LaVern Herman
Milford S. Ofstun

1957

William H. Nicholaus
Ethan D. Pfefferkorn
John F. Simpson

E. Robert Taake

1958

Dorothy Marie Barbo
Herbert M. Gahr
Gordon Grossman
H. Douglas Jameson
Kenneth Lerdahl
Gordon Lee McComb
P. O. McCormick
John Mielke
Roger D. Niehoff
Gerald E. Porter
Henry C. Rahr
Robert D. Schmidt
Raymond Stecker

Former Interns & Residents

George Ablin
Rovelle H. Allen
William Beyer
Robert W. Bedinger
Sue Hadley Biberman
Walter Blount
Alan B. Bond
E. Murray Burns
Miriam W.
Carmichael
E. G. Clahassey
Phillip M. Cornwell
Marcus E. Cox
Dan S. Ellis
Merritt W. Foster
John A. Gius
Edward E. Haddock
Merel H. Harmel
Gordon R. Harrod
Robert Hayes
William S. Haynes
William A. Hilger
Frank M. Hilpert
Glen S. Hogle
Norton R. Humphrey
Calvin L. Hunt

Walter A. Huttner
T. L. Hyde
Arnold Iglauer
Ferdinand C.
Jacobson
William P. Keiss, Jr.
David C. Lane
Nicholas Lentini
Jose E. Lopez
John M. Lynch
John P. Lynch
Laurence K.
MacDaniels
James W. Manier
E. Wayne Martz, Jr.
Mabel G. Masten
John McAreny
Carolyn Moore
McCue
Forde A. McIver
F. Gilbert McMahon
Peter Midelfart
L. J. Midelfort
Dwain Mings
William W. Moir
Donald E. Olson
Charles M. Polan

Reno R. Porter
Henry H. Reed
Maurice R. Richter
Hunter H. Romaine
Alexander T. Ross
Everett N.
Rottenberg
Paul F. Sader
Harry Salzer
Ursula Sanders
L. L. Shamburger
Adolph Shor
Samuel S. Spicer, Jr.
Stonewall B. Stickney
James Thompson
Jean E. Toncray
Vernon C. Turner
Gilman Tyler
Victor M. Vaughan
James E. C. Walker
C. P. Wangeman
Francis S. Williams
John M. Wilson
Isabel J. Wolfstein
Robert B. Woodhull
Blandina Worcester

Faculty

Edwin C. Albright
Raymond R. Brown
George Calden
Paul Clark
Helen Crawford
Seymour B. Crepea
Harold F. Deutsch
Anita Ergang
Alfonso Falcone
William F. Fey

Sally Gane
David T. Graham
Norman S. Greenfield
Henrik Hartmann
Charles Heidelberger
Sture A. M. Johnson
J. D. Kabler
Eleanor M. Larson
F. Gilbert McMahon
Elizabeth C. Miller

James A. Miller
John F. Morrissey
Leslie A. Osborn
Charles V. Seastone
Henry Suckle
Horace K. Tenney
M. C. Thomas
Alice A. Thorngate
Halvor Vermund
Duard Walker

New Head of University Hospitals Appointed



The appointment of **Edward J. Connors** as Superintendent of University Hospitals to replace Lloyd L. Hughes, who will leave the University for a position as Deputy Director of Rhode Island Hospital in Providence was approved by the University Regents at a recent meeting.

Mr. Connors will come to Wisconsin June 1 from the University of Michigan where he has been Assistant Professor in the Bureau of Hospital Administration. A native of Sioux City, Iowa and a graduate of the University of South Dakota, he has been at the University of Michigan since receiving his master's degree in hospital administration from the University of Minnesota in 1955.

In recommending the appointment of Mr. Connors to the post, Dean John Z. Bowers pointed out that he is a recognized leader in medical school hospital administration and has a special background in development of short courses for hospital personnel. Mr. Connors is married and has two children.

ALUMNI LUNCHEON In Miami Beach

As in past years the Medical Alumni will hold a luncheon meeting in connection with the annual A.M.A. Meetings, which are to be held in Miami Beach this year. Arrangements have been made with The Sea Isle Hotel, on the ocean, 30th to 31st St. for cocktails and luncheon to be served on June 14 at 12:00 noon.

An interesting program is being planned and all Alumni and wives, former faculty members, former interns and residents are invited to attend.

A surprising number of alumni from many parts of the United States attended last year's meeting and expressed an interest in this type of informal get-together. Because of the necessary arrangements to be made, advance registration is desirable. A charge of \$5.00 will be asked and tickets are available from the Wisconsin Medical Alumni Office, 418 N. Randall Ave., Madison, Wis.

Changes in Admission Policy

The University of Wisconsin Medical School is equipped and staffed to accept up to 100 students per freshman year. At a recent meeting of the Board of Regents the Medical School was authorized to give additional well-qualified students from out of state an opportunity for medical education when Wisconsin residents do not apply for admission in sufficient numbers to complete the class quota.

(Use this form if you have lost your pledge card or can upgrade your contribution)

WILLIAM S. MIDDLETON LIBRARY FUND

I hereby (Give) support in the category indicated.
(Pledge)

_____ (\$200) Middleton Medical Alumnus
_____ (\$500) Middleton Brown Derby Alumnus
_____ (\$1,000) Bronze Plaque Alumnus.
_____ (\$) Other
Ent. Amt.

Make checks payable to Wm. S. Middleton
Library Fund and send to 418 N. Randall
Ave., Madison, Wis.

_____ Extend my annual pledge of _____ for _____ additional years.
_____ Increase my pledge by \$ _____ which will qualify me for inclusion in the _____
_____ category.

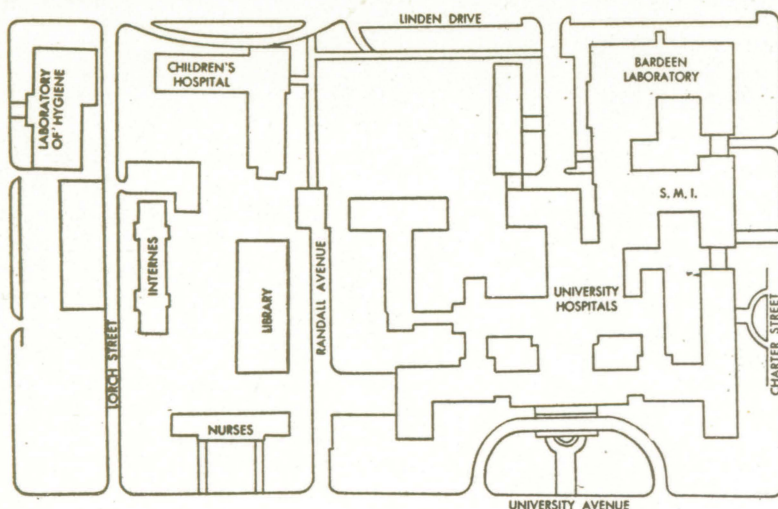
Name _____ Class _____

Address _____

City _____ State _____

I wish my pledge to be payable in _____one year _____two years _____three years

This pledge will not be considered binding on me or my family in case of my serious illness or death.



LIBRARY SITE APPROVED

Pictured is the location of the Wm. S. Middleton Medical Library. Located in the central portion of the Medical Center, it is easily accessible to the hospitals, laboratories and various buildings that comprise the Medical Center.

Class Representative Participation in Alumni Affairs

At a meeting of the Executive Committee of the Alumni Association held March 24, it was agreed that a recommendation be made at the Business Meeting on Alumni Day for more and broader participation in Alumni affairs by elected personnel. It was suggested that a group of class representatives, consisting of the presidents elected by each class, meet with the Executive Committee either the evening before Alumni Day or at a luncheon meeting on that day, to discuss Alumni affairs. The group would officially be known as the "Board of Class Representatives." You will be asked to vote on this recommendation at the Business Meeting May 20 and if agreed to the classes would be asked to elect a representative during the course of the coming year, and the first meeting of this type would be held at a luncheon on Alumni Day in 1961.

THANKS

The following statement recently appeared in an editorial of the Madison Capital Times, "The Capital Times has reported in great detail the remarkable progress at the University Medical School in the past several years. This institution now stands as one of the finest in the nation in pursuing its three-fold mission of teaching, research and service."

CORRECTION

Some incorrect information was included in the January 1960 Newsletter in reporting the 100th "open-heart" surgical procedure using a pump-oxygenator at our University Medical Center in October 1959.

The patient's ages actually ranged from 8 months to 65 years. We thought it well to present here the correct spread of ages to help those who might be planning surgery for their patients. At present every effort is made to carry patients medically until they are one year old if their surgery is to be done with the use of the pump-oxygenator. It is planned to correct most congenital intra-cardiac defects before the patients are of school age, but soon after one year of age if they have pulmonary hypertension. Aortic stenosis, however, is usually corrected during school age. Acquired lesions are, of course, corrected when they develop to the point that altered hemodynamics requires surgery.

ALUMNI MEETING—May 3

A state-wide Alumni meeting will be held during the annual State Medical Society Meetings in Milwaukee, May 3, 4 and 5. Mr. George Lanphear, Director of Sports Information at the University, will discuss "Wisconsin Football Prospects for 1960" at the noon luncheon meeting planned for Tuesday, May 3, at 12:00 noon in Juneau Hall of the Milwaukee Auditorium. Silas Evans '36 and Joseph Stone, '35 are co-chairmen of the meeting.

Alumni Capsules

Wisconsin Medical Alumni were well represented at the recent Olympic games at Squaw Valley. **James Hanson**, '56, a resident in orthopedic surgery at University Hospitals served as team physician for the American ski jump team. While there he ran into **David Bradley**, '44, and his father, **Dr. Harold C. Bradley**. David's official title was manager of the American ski jump and cross country team. In addition to this duty we heard that David is a member of the New Hampshire legislature. **Dr. Harold Bradley**, for many years a member of the Physiological Chemistry department, retired in 1948. He now lives in California but is well remembered in Madison not only for his academic work but also for his interest in skiing.

Speaking of games and sports, **Marvin Roesler**, '54, won a National Sailing Regatta for Class "C" sailboats last fall at Kansas City. Janesville's proximity to Lake Delavan probably accounts for his settling in that Wisconsin area.

We understand another type of sports—racing—holds the interest of one of our most loyal members of the Executive Sub-Committee, **Wm. Smiles**, '48. He makes better time coming from the tip of northern Wisconsin to Madison for meetings than do the members from Milwaukee. Seems to think he's still at the helm of his P.T. boat, dodging Japanese shells.

A 1946 Alumnus, **Herman P. Gladstone**, has returned to the University of Wisconsin as Asst. Prof. of Psychiatry at the Medical Center. From 1953 to the present, he has combined private practice in New York City with clinical

teaching at New York University. Dr. Gladstone's duties will consist of teaching, research, supervision of medical students and residents and Director of Student Health Section of the Dept. of Psychiatry.

Frances A. Hellebrandt, '29, also returned to the Medical Center to head the Motor Learning Research Laboratory, where University coeds strain their muscles with weight lifting to prove Dr. Hellebrandt's theory that if one set of muscles cannot be effectively exercised (as after paralytic polio, when one limb or one side of the body is affected), it can nevertheless be built up by exercising health muscles near by, or the corresponding set on the opposite side.

After surviving a couple of Wisconsin winters, **Philip Waldestad**, '54, wonders why he ever left California to settle in Fredonia, Wis.

Roy W. Zimmer, Jr., '53, recently completed postgraduate studies in general and thoracic surgery at the Mayo Clinic, Rochester, Minnesota and has opened an office in Madison. Prior to this Dr. Zimmer was on active duty in the Air Force. He attended the School of Aviation Medicine at San Antonio, Texas, and served as flight surgeon in the Air Force.

Eldred F. Hardtke, '46, psychiatrist at Indiana University, Bloomington, Indiana, is President of his county medical society after serving two years as Secretary; and President-Elect of the Indiana Neuropsychiatric Assoc. (Comprising psychiatrists, neurologists and neurosurgeons.)

Kind words from **George Woodington**, '53, tells us he enjoys the Alumni Newsletter and will be finishing his residency in surgery at Mayo Clinic in July. He plans to join the Beloit Clinic where he will be doing general and thoracic surgery. His family at present consists of three children, 2 girls and one boy.

In December, **John Allen**, '51, resigned as corporation medical director of Oscar Mayer and Co., Madison, to assume direction of all medical care programs for the State Office Department of Public Welfare, Division of Public Assistance. This new position was created to more effectively correlate medical efforts between county, state and federal medical agencies, rehabilitation agencies and education institutions.

A letter from Indiana informs us that **Marvin N. Golper**, '44, his wife Jean (Becker—Wis. '42) and three sons greatly enjoy their life in Kokomo where he has been practicing in Radiology since 1951. Dr. Golper, who is Director of Radiology at St. Joseph's Hospital, has recently taken office as President of the Howard County Medical Society.

Don W. Maas, '43, remains with the Veterans Administration as Chief, Anesthesia Section, V.A. Hospital, but has moved from Dallas, Texas to Long Beach 4, Calif.

Dick Goodman, '54, still a bachelor, recently completed a two-year tour of duty with the Air Force in Casablanca, Morocco, and is now taking a dermatology residency at University of Chicago Clinics.

Two graduates of the '57 class were recently married in Milwaukee, **Margaret Hoek-**

stra and Warren D. Davidson. They are still in Philadelphia, Pa. where Dr. Warren is a resident physician in internal medicine at Philadelphia General Hospital and Dr. Margaret has been practicing medicine both as a pediatrician and a research associate at Children's Hospital.

C. Weir Horswill, '52, who completed a residency in Gynec. at Wisconsin General Hospital this past July, has accepted a position as clinical instructor in that department and will specialize in gynecological surgery and pediatrics in Madison. Dr. and Mrs. Horswill have three children, Craig, Susan and Mary Jo.

James K. Gray, '36, a Colonel in the U.S.A.F. recently moved to 712 Wolcott Ave., Syracuse, N.Y. after spending a year in Korea.

Friends of George M. Kroncke, '54 tell us he is now the proud father of a five-months old daughter. Dr. Kroncke, who was also a surgical resident at Wisconsin General Hospital, plans to finish two years as naval surgeon. His present address is 1335 S. Sherwood Drive, Charleston, S. Car.

Archie H. Tax, '32, was recently elected Secretary of the Milwaukee Academy of General Practice. Lloyd Fifrick, '38 was elected a director of the same group.

The mayor of Kenosha ap-

pointed Margaret Hatfield, '27, of Elkhorn as the city's health director. Dr. Hatfield, who has been district health officer for the State Board of Health, replaced E. E. Bertolaet, '31, who is now practicing in West Bend. She was in private practice for a brief period before entering the public health with which she has been connected for 20 years.

Edward N. Vig, '45, Viroqua, is a new member of the Medical Care Section of the American Public Health Association.

Dr. and Mrs. Lawrence Gregory, '25, were guests at a dinner given just prior to the opening of Dr. Gregory's office in Lannon, Wisconsin last December. More than 90 Lannon residents attended the affair honoring the village's first practicing resident physician. Dr. Gregory had practiced 20 years in Manitowoc, three years in the armed services and four years in Sarasota, Florida, before coming to Lannon.

Faculty in the News

Dr. H. F. Deutsch, Prof. of Physiological Chemistry, has been granted an eight months' leave of absence, five months of which will be spent abroad. Under a George Ives Haight Travelling Scholarship he will spend three months at the Rockefeller Institute in New

York City, followed by five months at the Max Planck Institut Biochemie, Munich, Germany. Dr. Deutsch will engage in the study of new research methodologies in organic chemistry as applied to the structure of protein.

Dr. D. Murray Angevine, Chairman of Pathology Dept., has been reappointed to the Editorial Board of the Archives of Pathology by the Board of Trustees of the A.M.A.

The Swiss Academy of Medical Science, Basle, Switzerland, announced recently that Dr. Konrad Akert, Assoc. Prof. of Anatomy of the University of Wisconsin had been elected to share the Robert Bing Award in the neurological sciences with Prof. P. Buser of Paris. This award is given annually for distinguished research. Dr. Akert will go to Basle in June to deliver a lecture and to receive the approximately \$4,000 cash prize.

Dr. George W. Brown, Jr., instructor in Physiological Chemistry since 1958 has been named the recipient of a Lederle Medical Faculty Award. The award, given by the Lederle Laboratories, is designed to provide support for continued development of a promising teacher and investigator in fields of medicine and human biology. His research interests lie in problems dealing with the basic aspects of morphogenesis, enzyme induction, differentiation and growth.

Wisconsin Medical Alumni Assn.

Univ. of Wisconsin Medical School
418 N. Randall Ave.
Madison 6, Wis.

Non-Profit Organ.

U. S. POSTAGE

PAID

Madison, Wisconsin
Permit No. 658

DR DONALD R. KORST
1214 FOXONA ROAD
ANN ARBOR, MICH.