



JANUARY, 1959

VOL. 11, No. 6

UNIVERSITY of WISCONSIN  
MEDICAL  
SCHOOL

## Dates to Remember

# MEDICAL ALUMNI NEWSLETTER

## ALUMNI MEETINGS

The Wisconsin Medical Alumni Association, with the cooperation of the Medical Center, has planned a series of alumni area meetings in an attempt to re-establish relationships and acquaint the alumni with current happenings in the Medical Center. Because of the many advances in medicine, the rapid growth of hospitals and a change in the economic picture, Medical Schools must also change with the times. Indicative of this are faculty changes at all levels, new programs in teaching, research and patient care and major physical and organizational changes at the hospital.

**Dr. Robert C. Parkin, '43**, Assistant to the Dean and Secretary-Treasurer of the Medical Alumni Association has scheduled a trip to the West Coast for a two week period, beginning January 5. Plans have been made for him to meet with local alumni groups and present a progress report of activities within the school.

Dr. Parkin will meet with four of these local groups in Washington, Oregon and California. A list of the dates and the local area chairmen is as follows:

*(continued on next page)*



## Wisconsin Medical Alumni Newsletter

published January, April, July and  
October by the

### WISCONSIN MEDICAL ALUMNI ASSOCIATION

418 North Randall Avenue  
Madison, Wisconsin

#### ALUMNI OFFICERS

Einar R. Daniels, M.D., '34	<i>President</i> Milwaukee
A. A. Quisling, M.D., '30	<i>President-Elect</i> Madison
E. J. Nordby, M.D., '43	<i>Vice-Presidents</i> Madison
Adolph Hutter, M.D., '30	Fond du Lac
Robert Samp, M.D., '51	Madison
Albert Martin, M.D., '35	Milwaukee
Robert C. Parkin, M.D., '43	<i>Secretary-Treasurer</i> Madison
	<i>Editor</i> Robert Samp, M.D.,
	<i>Associate Editor</i> Mrs. Marcella Hilgers

#### WISCONSIN MEDICAL ALUMNI ASSOCIATION

Full membership in the Association is open to the following groups:

1. Graduates of the University of Wisconsin Medical School with an M.D. degree.
2. Those who completed the two-year course formerly given at Wisconsin, although they received their M.D. degree elsewhere.
3. Members of the faculty who are not graduates of the U.W. Medical School.
4. Any physician who has served a period as intern and/or resident at University Hospitals.

Annual Dues, July 1-June 30—\$5.00.

#### ALUMNI MEETINGS (Cont.)

January 5—Dr. C. A. Stevenson, 407 W. Riverside Avenue, Spokane, Wash.

January 7—Dr. Frank Perlman, 406 Medical-Dental Bldg., Portland, Ore.

January 8—Dr. Robert Salter, 1045 N. California St., Stockton, Calif.

January 12—Dr. Stanley Edwards, 1930 Wilshire Blvd., Los Angeles, Calif.

Local area meetings have also been planned for Wisconsin, in Milwaukee and Wausau, as well as the annual meeting in Milwaukee in conjunction with the State Medical Society meeting on May 5-7. **Dr. Einar Daniels** is arranging the Milwaukee meeting, to be held January 14 at the University Club in Milwaukee. It will begin with cocktails at 6:00 p.m., dinner at 7:00, followed by a short program. **Dr. Roy Larsen** will handle the Wausau arrangements. The meeting will be held either February 25 or 26. Each program will feature Dr. Francis Forster, Chairman of Neurology, currently heading a scientific mission to Russia, and a report on the Library Fund Campaign by Dr. Mischa Lustok, Chairman of the campaign. Tentative plans are for a meeting in Fond du Lac later in the Spring. Dr. Adolph Hutter will handle the arrangements.

On May 5, a state-wide alumni meeting will be held in connection with the State Medical Society meetings in Milwaukee. Dr. Robert C. Parkin will be responsible for arrangements at this meeting at which Associate Dean Otto Mortensen will speak on "Medical Education in Peru".

The Loraine Hotel in Madison has been selected for the site of the 1959 Annual Alumni Day meeting on May 15. The reunion classes of '29, '39 and '49 will be particularly honored at this year's festivities. These classes have been requested to choose their class representatives and speakers. We should have a more definite program ready for the next issue of the Newsletter.

The Alumni meeting held in San Francisco last year in connection with the A.M.A. Meetings was so thoroughly enjoyed by all participants that we plan to duplicate the experiment. The A.M.A. meetings will be held in Atlantic City in June and volunteers or nominations for a local chairman to plan the event will be warmly welcomed.

We would like to stress that all Alumni and their wives are invited to these get-togethers. Why not plan to attend one or more of them?





## Postgraduate Courses Setting New Records

Attendance at the three postgraduate courses given this semester at the Medical Center has doubled over last year's corresponding enrollment, and registrations from a wider geographical area have been noted. A doctor's life is a busy life and consideration must be given to the loss of time spent in travel, consequently postgraduate courses are chosen, first, for their subject matter, and second, for their proximity to home. To this extent, attendance at the courses is predominately made up of doctors from Wisconsin and bordering states. However, interested doctors from such widely divergent areas as Alaska and Pennsylvania have responded.

Wisconsin leads in attendance, with about 40 % of the total enrollment; next in line is Illinois with 20 %; Michigan has a slight lead over Minnesota and Iowa—these three accounting for approximately 30 %; Indiana, Nebraska and occasional visitors for each course from more remote states accounting for the remaining 10 %. The course in General Practice commanded the largest attendance—it also has the honor of two doctors travelling the longest distance to attend, Dr. Charles St. John of Anchorage representing the new state of Alaska, and Dr. Donald W. Stechschulte of Pittsburgh, Pennsylvania, who dropped in without an advance registration.

A one-day course on RECENT ADVANCES IN THERAPEUTICS has been added to the original list of postgraduate course. This course will be given in the new Wisconsin Center Building.

Titles and dates of four remaining courses are listed below. Programs have been arranged for the next four courses scheduled. Supplementary material describing each course will be sent out six weeks before the course. Requests for additional information should be sent to: Dr. Robert C. Parkin, Coordinator of Graduate Medical Education, 418 N. Randall Ave., Madison, Wis.

### RECENT ADVANCES IN THERAPEUTICS

February 19, 1959

Frederick E. Shideman, M.D., Ph.D.  
Chairman, Dept. of Pharmacology and Toxicology

This course will cover four areas of therapy which are either new developments or about which there have been frequent questions. Both lecture presentations and discussions will be aimed for the benefit of the physician in practice. Guest faculty include: Rachmiel Levine, M.D., Chairman, Dept. of Medicine and Director, Medical Education, Michael Reese Hos-

pital, Chicago, Ill. and David H. P. Streeten, M.D., Asst. Prof. of Internal Medicine, Ann Arbor, Mich.

### HEMATOLOGY AND HYPERTENSION

March 19, 20 and 21, 1959

O. O. Meyer, M.D., Chairman, Dept. of Medicine

This course will devote one and a half days to concentrated study of hematologic subjects and the final two half days to discussion of hypertension in its various aspects. The section on hypertension will include the natural history of the disease, the clinical evaluation of the hypertensive patient, the personality pattern of the hypertensive patient, and the complications of this disease. Guest speakers include: Dr. George E. Wakerlin, Medical Director, American Heart Assn., New York City and Dr. Scott Swisher, Assoc. Prof. of Medicine, Rochester School of Medicine, Rochester, N.Y.

### PROBLEMS OF THE NEWBORN PERIOD

April 2, 3 and 4, 1959

Nathan J. Smith, M.D., Chairman, Dept. of Pediatrics

This two and one-half day meeting is being presented for pediatricians and those with a special interest in pediatrics. The meeting will feature five nationally recognized pediatricians as guest lecturers: Richard Day, M.D., State University of New York, Downstate Medical Center, Brooklyn, N.Y.; Heinz F. Eichenwald, M.D., Cornell University Medical College, New York, N.Y.; Edward L. Pratt, M.D., Southwestern Medical School, Dallas, Texas; Julius B. Richmond, M.D., State University of New York, Upstate Medical Center, Syracuse, N.Y.; and Clement A. Smith, M.D., Harvard Medical School, Boston, Mass.

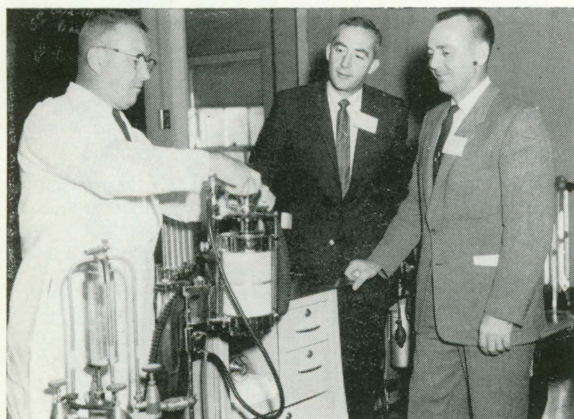
### THE PATHOLOGY AND RADIOLOGY OF THE SKELETAL SYSTEM

May 21, 22 and 23, 1959

D. Murray Angevine, M.D., Chairman, Dept. of Pathology

Lester W. Paul, M.D., Chairman, Dept. of Radiology

The course is designed primarily for specialists in Radiology and Pathology but is open to any interested physician. Stress will be placed on the correlation of pathological and roentgenological findings in diseases affecting the skeletal system. It will consist of lectures and round table discussions. There will be a visiting faculty composed of men with national recognition in the field of skeletal disease.



Carl Siebecker, Dept. of Anesthesiology, is shown demonstrating modern anesthesia equipment at the postgraduate course on "Advances in Anesthesia and Resuscitation."



Paul C. Hodges, M.D., Prof. of Radiology, University of Chicago, and Charles L. Dunham, M.D., Director, Division of Biology and Medicine, U.S. Atomic Energy Commission, Germantown, Maryland, were guest lecturers at a recent symposium on Hazards in the Medical Uses of Radiation and Methods of Protection.



## Evolution of a Building

Ground was broken May 2, 1958 on the University of Wisconsin campus for the second addition to the Service Memorial Institutes Building of the U.W. Medical School. The new six-story structure, located at Charter Street and Linden Drive, will complete the Medical School's quadrangle at that location. The more than \$2-million project is being financed with \$1,005,000 from the U. S. Public Health Service, \$750,000 from the Wisconsin Alumni Research Foundation, and \$255,000 from the state. Medical departments tentatively scheduled to occupy space in the addition include physiological chemistry, pathology, pharmacology, neuropsychology, preventive medicine and medical genetics.

We did a little research on the historical background of the two buildings razed to make room for the addition, in hopes that we could find some medical association. Unfortunately, while the buildings were occupied by personnel of the university, none of them were medical men. The house on the corner was owned by an Emeritus Professor in Astronomy and the second house by a one-time Chairman of the Department of Dairy Husbandry in 1920, the time of purchase. Charter Street was originally Mary Street. Linden Drive didn't exist, but there was a dirt road adjacent to the corner house. That road was King Street (an extension of State Street) and was later named Morris Street. At one time we had both a Morris Street and a Linden Drive.

In the first picture, Drs. Wm. D. Stovall, Erwin R. Schmidt and T. H. Bast are pictured in front of the buildings that were razed. The buildings face Charter Street. In the second picture Wilbur N. Renk, Sun Prairie, President of the University Regents, is shown breaking ground for the new research wing. In the background are (L. to R.) University President Conrad A. Elvehjem; Ward Ross, Managing Director of WARF; Thomas E. Brittingham, Jr., President of the Board of Trustees, WARF; University President Emeritus E. B. Fred; Walter A. Frautschi, Trustee of WARF; Edwin O. Rosten, Operations Director of WARF; and John Z. Bowers, Dean of the U.W. Medical School, holding a picture of the completed quadrangle. Picture No. 3 shows the progress made on the construction of the building on December, 1958. If all goes according to schedule, it should be completed sometime in the Fall of 1959.



## Medical School Gets Gavel

from Muir Locust

A cherished University of Wisconsin tradition was kept alive recently when University Regents accepted, for the Medical School, a gavel and sounding board presented by Dr. R. G. Arveson, Frederic.

The gavel is one turned by Prof. Walter A. Rowlands, Director of the Branch Experiment Stations, from the wood of the Muir Locust, the campus tree credited with inspiring John Muir to take the road that led him to world fame as a naturalist. Dr. Muir is remembered for his work in forest conservation, work which earned for him the title of "father of our national park system."

With constant care, the University managed to keep the tree alive until 1953, and when it died, saved the wood. From some of it, Prof. Rowlands turned a set of gavels which were presented to conservation and state leaders. Dr. Arveson, past president and chairman of the Council of the State Medical Society and a member for eight years of the University Board of Regents, received one of the gavels and, in turn, returned it to the University and the Medical School in which he took a great interest as a regent. He accompanied the gavel with a special cradle and sounding board, which he made of birch.

The gavel and sounding board will be used, in the future, to call meetings of the University Medical School faculty into session.



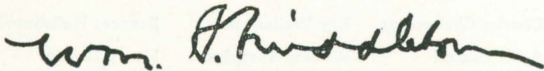
## Greetings From 'The Dean'

*Professional Children and Friends of the  
University of Wisconsin Medical School:*

*My operatives work everywhere! From many sources I have learned of the remarkable success attending the Library Fund Drive.*

*As you doubtless know, I am the physical type. For forty-three years, I quarterbacked Wisconsin teams—much to the discomfiture of friends on the same bench—in old and new Camp Randall. Over the years, there were certain teams that moved the ball well up to the fifty-yard line, only to lose maneuverability and momentum when they got in the enemy's territory. Other teams have maintained their drive and pushed the ball over by careful strategy and main force.*

*The leadership in the Library Fund Drive is splendid and the teamworkers in the field have manifested a spirit and energy that cannot be denied. The progress to date is the brief for the worthiness of the cause. With your sustaining support, let us push the drive over the top in 1959!*



WILLIAM S. MIDDLETON, M.D.

## Nobel Prize Winners

## Medical School Professor and Alumnus Honored

Dr. Joshua Lederberg, Chairman of the Department of Medical Genetics, and Dr. Edward L. Tatum, who received his Ph.D. degree in Biochemistry at the University of Wisconsin in 1934 and is now at Rockefeller Institute of New York, joined a third American scientist Dr. George W. Beadle, California Institute of Technology as the 1958 winners of the Nobel Prize in Medicine and Physiology. The trio won the coveted prize for solving some of the basic riddles of heredity. Their discoveries were credited with opening new avenues in cancer research. Dr. Lederberg's one-half share of the prize was awarded "for his discoveries concerning genetic recombination and the organization of genetic material of bacteria." The other half of the prize will be equally shared by Drs. Beadle and Tatum "for their discovery that genes act by regulating specific chemical processes." Dr. Tatum is the son of the late Dr. Arthur L. Tatum, University of Wisconsin Professor of Pharmacology. Dr. Lederberg is scheduled to leave Wisconsin in February to take a similar post at Stanford University, Palo Alto, California.

## Distinguished Visitors

## To the Medical Center

The Medical Center has been extremely fortunate during the past few months in having a number of internationally known scientists visit its various departments. Dr. Tadao Toda, Professor of Bacteriology, Kyushu University Medical School, Japan, visited the Medical Center in November under the auspices of the China Medical Board of New York, Inc. Dr. Toda is Advisor to the Ministry of Education in Japan and was anxious to observe developments in the education of teachers for the basic medical sciences and the training of interns and residents.

Medical faculty were very much interested in a lecture on "The Role of Uridine Nucleotides in Metabolism" given recently by Luis F. Leloir, Director, Instituto de Investigaciones Bioquímicas, Fundación Campomar, Buenos Aires, Argentina.

Dr. Stephen Fazekas of the Australian National University, Department of Microbiology met with members of the Departments of Genetics, Medical Genetics and Bacteriology and lectured on "Mechanism of Neutralization of Animal Viruses by Antibodies" at the State Laboratory of Hygiene.

As a special guest of the Medical Education for National Defense program, Dr. Lorentz Eldjarn of the Norwegian Radium Hospital in Oslo, Norway, lectured on "Radiation Protection". The lecture, which dealt with chemical compounds showing experimental promise, was of particular interest to Radiologists.

The Department of Neurology was host to Dr. Komei Ueki, Professor of Neurological Surgery at Miigata University School of Medicine, Japan. Dr. Ueki is particularly interested in spastic children and infantile hemiplegia.

Dr. David Carlsson of the Department of Pharmacology of the University of Lund, Sweden, visited the Medical Center in October. He presented a lecture on "The Occurrence, Distribution and Physiological Role of Catecholamines in the Nervous System."



Dr. Tadao Toda, Professor of Bacteriology, Kyushu University Medical School, is pictured above on a recent visit with Dr. John Z. Bowers, Dean of the Medical Center and Lloyd Hughes, Superintendent of University Hospitals.



# Library Fund — PROGRESS REPORT

As we go to press the Library Fund has exceeded the \$170,000 level and shows no signs of abating. But we cannot yet rest on our oars. The goal is still distant and the maximum support from each Alumnus will be necessary if we are to be successful. If you have already given and can afford more, it is needed. **You will receive cumulative credit for all contributions to the Library Fund, past and future.** If you have not given let us hear from you soon. As Stanley Edwards, area Chairman for Northern California, has so aptly expressed it, "This is not a charity but an obligation to the school that has given us our medical education and to which we owe our current status."

A number of contributions have been in the form of shares of stock transferred to the Library Fund. The tax advantage of such a gift is significant. The stock may have appreciated greatly over its original purchase price. You receive full credit for the value of the stock as of the time it is transferred and do not have to treat it as a capital gain. A handsome gift of this nature particularly worthy of mention is that of Dr. William Shanahan. Go to the head of the class, Bill!

Many are earmarking their gifts for memorials to admired former teachers, relatives, or classmates. Dr. F. T. H'Doubler, Jr., '48, is heading a campaign among his classmates to raise funds for a memorial room for Bill Bleckwenn, President of his class, who died following a cerebral vascular accident.

Former patients, friends and associates of Dr. Middleton in the Veterans Administration have indicated their desire to participate in the campaign.

Some excellent contributions have been received from clinics in Wisconsin who utilize the Medical Library and feel a close tie to the Medical Center. Foremost among these have been those of the Jackson Clinic of Madison and the Pember-Nuzum Clinic of Janesville, Wis.

As you can see we are progressing well but are still in the initial stages. Many of your fellow Alumni are giving unselfishly of themselves to make the drive a success. To give due credit to all of the Area Chairmen and their Lieutenants would require much more space than we have. The most gratifying thanks all of us associated with the campaign can receive is in the wholehearted response from the entire Alumni body.

Each contribution brings us closer to our goal since every dollar collected goes to the Library Building Fund. None is used for expenses of the campaign.

## THE TOP TEN TOTALS—Our Vintage Years

Totals and years subject to change at the flourish of a check book—the flash of a pen!

Faculty—(Including Alumni Members) .....	\$6,970
1936 .....	4,885
1935 .....	4,610
1943 .....	4,558
1933 .....	3,925
1932 .....	3,860
1930 .....	3,775
1929 .....	2,898
1934 .....	2,360
1939 .....	2,320

## CHARTER MEMBERS

### Bronze Plaque Alumnus

Marian Swigart	Howard Lee	Abe Quisling
Maurice Richardson	Herbert Pohle	Frederick Davis
Oliver Tjoflat	Roland Jacobson	Frank Weston
Robert Turell	Alexander Braze	Helen Dickie
Charles Christenson	Ray Welbourne	Frances Hellebrandt
A. R. Curreri	William Shanahan	Henry Brosin
William Konnak	Richard Dickman	Edward Mielke
Herman Shapiro	Ovid Meyer	

In memory of George Lemmer, M.D.

In memory of John W. Gilmore, M.D.

### Middleton Brown Derby Alumnus

Harry Culver	John Miller	John Harris
K. K. Chen	Bradford Crandell	Adam Earney
Elizabeth Grim	Martin Kein	Wilson Phillips
Walter Rein	Jeanne Andrews	Gilbert Stannard
Chester Kurtz	Sam Boyer	Adolph Hutter
Everett Johnson	Jay Goodman	Roy Biehn
William Horowitz	Stanley Edwards	William P. Young
Ann Fred	Sidney Wynn	Philip Christiansen
Mischa Lustok	Stevens Martin	Frank Leitz
Melvin Stuessy	Edith Parkhill	Fred Gaenslen
Robert Waffle	Harwin Brown	Gordon Strewler
Norman Birkbeck	Harold Fishbain	Oscar Hanson
James Bingham	Charles Trush	Ethan Pfefferkorn
Alban Tessier	David Schuele	Carl Greenstein
Victor Falk	Leonard Lovshin	Caroline Thompson

### Middleton Medical Alumnus

Ross Paull	Charles Martin	Madeline Roueche
Roland Benson	Samuel Katz	Norman Franken
R. C. Bunts	Robert Gilman	E. H. Betlach

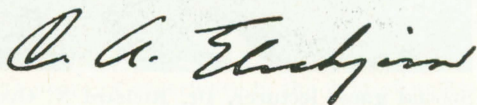


Harold Coon	David Goldstein	Walter Kleinpell	Max Laven	Meyer Friedman	Aaron Herschfus
Leo Lifschutz	William Luetke	James McIntosh	June Shafer	John Parks	Phillips Bland
Caroll Osgood	Leland Pomainville	Robert Ramlow	M. S. Peterson	Joseph Wepfer	Frank Perlman
Frank Scheible	Raymond Schrank	Morrison Schroeder	Marvin Greiber	Albert Miller	Thomas Leonard
Lynn Seward	Alexander Spooner	William Wagner	Anton Schoenenberger	Herbert Giller	Peter Duehr
Frank Treskow	Herbert Raube	Rodney Wichman	Edward Phillips	James Wilkie	Robert Natelson
Herbert Benn	Albert Fisher	William Sheehan	F. J. Davis	John Steinhaus	Roger Kjentvet
Harry Mannis	August Jurishka	John Berger	Frederic Mohs	Theodore Millman	Erwin Grossman
George Fiedler	Sidney Rubin	King Woodward	Gerald Gredler	Wm. VaudRevil	Alice Watts
Ernest MacVicar	Ned Shutkin	Oscar Thoeny	Morris Gold	Robert Roessler	Everett Humke
Clifford Hogenson	Loron Thurwachter	Leslie Kindschi	Shaffk Richany	Joseph Shimpa	Norman Steiner
S. R. Beatty	Joseph Springer	Herbert Gasser	Norvan Gordon	Louis Kagen	John Koepsell
Raymond Baldwin	Walter Meek	Alfred Wallner	D. L. William	William Russell	William Oatway
James Green	Michael McGarty	Ann Henschel	Arvin Weinstein	Leslie Tasche	Janet Whitmore
Clyde Stevenson	Judith Walton	Ralph Kennedy	J. Kent Twetten	David Welton	Isadoro Schultz
R. J. Dancey	Carl Sibilsky	Sam Chapman	Fred Ansfield	Elvir Seno	E. C. Burgess
Martin Mueller	Willard Wall	E. E. Tennant	Joseph Gosman	Allan Gay	Kenneth Humke
Royden Collins	Thomas Gocke	Earl Muntz	Dean Plazak	Madeline Thornton	D. Murray Angevine
Francis Larme	Raymond Kuhn	James Tuura	Joel Taxman	Irvin Belker	Ray Quandt
Eugene Usov	Della Drips	Peggy Bond	Erwin Grossman	Joseph Behrend	Eugene Adashek
Eugene Nordby	Alex Scott	Harvey Raszkowski	John Frost	Horace Hansen	Paul Edwards
Arpad Masley	Thorolf Gunderson	Norman Clausen	George Behnke	Robert Quinn	

## Open Letter from President Elvehjem

*On behalf of the University I wish to commend our Medical alumni in their campaign to raise funds for the Medical Library. In providing this needed facility, you are honoring one who has become synonymous with Medical science at the University—Dr. William S. Middleton. Your loyal support is essential to the continued well-being of our Medical School.*

*Sincerely yours,*



C. A. ELVEHJEM, President  
University of Wisconsin

## A Visit To Russia

Two University of Wisconsin scientists recently visited the U.S.S.R. on a tour of nerve research centers, as members of a six-man delegation of American Scientists of Physiology and Pharmacology of the Nervous System.

Dr. Francis M. Forster, Chairman of the Department of Neurology and Dr. Clinton N. Woolsey, Professor of Neurophysiology, spent a month in Russia, under the auspices of the United States Public Health Service.

Dr. Forster, who was Chairman of the group, stated: "The Delegation spent a profitable month visiting the research institutes in Moscow, Leningrad, Kiev, Tbilisin and Sukumi. We were graciously received by our Soviet Colleagues with a free exchange of scientific ideas between the two groups of scientists. A similar delegation of Soviet Scientists will be visiting the United States in January and February of this year, and are expected here at the University of Wisconsin during their visit in the United States. The American Delegation was pleased with the opportunity to visit the Soviet Laboratories and to be with their colleagues and discuss mutual scientific problems. The hopes for peace were as strongly expressed by the Soviet Scientists as they were by the American Scientists."

The mission, first in the field of Neurology, was made possible by an agreement signed with Russia in January, 1958, to permit such exchange visits in various fields. Negotiations were handled by Mr. Lacey of our State Department and Mr. Zaroubin at the time he was Ambassador of the Soviet Union to the United States. Other members of the group included: Dr. Carl Frank, United States Public Health Service, Dr. Lewis Goodman, University of Utah; Dr. Henry Woltman of the Mayo Clinic and Dr. Paul Yakovlev of Harvard.



## Honor For Dr. Robert Schilling

### To Study Abroad

Dr. Robert Schilling, '43, discoverer of the Schilling Test, is the recipient of a Commonwealth Fund Fellowship, enabling him to spend six months abroad doing research in the field in which he has won world-wide recognition. He will leave March 1, 1959, for England where he will study developments in the immunological field. Travel expenses will be paid by a grant from the University Research Committee.

Dr. Schilling is a Wisconsin product, receiving an M.D. degree in 1943. After graduation he entered Military Service, serving as Assistant and Battalion Surgeon with an Infantry Battalion in 3rd Marine Division at Guadalcanal, Guam, and Iwo Jima. While he was a resident in internal medicine here at the University, he received a Research Fellowship at the Harvard Medical School where he worked with Dr. Wm. B. Castle, who discovered the intrinsic factor missing from the stomach of patients suffering from pernicious anemia. After his return to Wisconsin, Dr. Schilling did research into blood diseases and developed the Schilling Test, which is known and used throughout the world for the diagnosis of pernicious anemia.

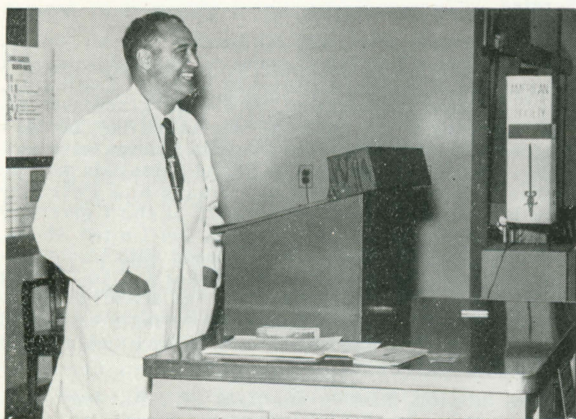
Last year Dr. Schilling was one of the leading speakers at the Congress of Scientists in Hamburg, Germany. At the present time he is engaged in important work in the study of Leukemia and the investigation of the metabolism of Vitamin B12.

## Christmas — 1958



The Medical School and University Hospitals held its annual Christmas Party, Tuesday, December 16, 1958, in the Hospital cafeteria. Many retired faculty and members of the staffs returned for an enjoyable afternoon. Shown above are Drs. Kenneth Lemmer, Erwin Schmidt and Hans Reese with Santa Claus extending Holiday Greetings to all.

## Fall Cancer Symposium



Anthony R. Curreri, '33, Director of Cancer Research Section of University Hospitals, is shown above addressing a group of Alumni and interested doctors at its October 11 meeting. The Wisconsin Medical Alumni Association held its annual Fall get-together in conjunction with the FALL CANCER SYMPOSIUM, co-sponsored by the Wisconsin Division of the American Cancer Society and the Cancer Research Section of University Hospitals.



Special guest lecturer, Dr. Richard N. Overholt, an eminent chest surgeon and Chief of Surgery at New England Deaconess Hospital, Boston Tufts Medical College, is shown above, second from the left, enjoying luncheon with l. to r. Paul Wochos, '50, Chicago, Ill., Walter Ben Washburn, '49, of Madison, Wis., Mrs. Washburn and Mrs. Wochos.





In 1926 the Wisconsin Medical School pioneered in the establishment of the preceptorial program as a means of providing students with increased contact with acute illness and ambulatory patients. Beginning in 1888, the University of Wisconsin offered certain courses preparatory to the study of medicine. Under such teachers as Edwin A. Birge, William Snow Miller and William S. Marshall the foundations for the medical curriculum were laid. In 1907, with Dr. Charles R. Bardeen as Dean, the first two years of the medical course were offered. The delay in the establishment of the complete medical course at Madison afforded the opportunity for the exploration and planning of its content and objectives. With the construction of the State of Wisconsin General Hospital on the University campus, clinical facilities became available for the acceptance of the first class to the third year of medicine in September, 1925. Dean Bardeen early perceived the advantages of the preceptorial system and was exceedingly fortunate in enlisting the enthusiastic support of medical leaders throughout the state. In 1926 the preceptorial plan was instituted by the assignment of senior students to six centers throughout the state. Of these six original centers, located at Marshfield, La Crosse, Eau Claire, Wausau, Oshkosh and Ashland, all but Oshkosh are still active in the clinical teaching program at the Medical School. In the intervening years, however, the number of preceptorships has been increased to fifteen located at Milwaukee, Westby, Eau Claire, Ladysmith, Monroe, Ashland, Rhinelander, Sheboygan and Marshfield; with the addition of two each at Janesville, La Crosse and Wausau. A roster of present-day preceptors includes many names that were familiar in the days of its inception—names like Gundersen, Midelfart, McGarty, Jones and Weeks. Adolf and Alf Gundersen were two original preceptors at La Crosse, now Gunnar is Preceptor there; Christian U. Midelfart was an original preceptor at Eau Claire, where his son Peter A. is now. Two of the original preceptors are still on active duty—Merritt L. Jones at Wausau and Matthew A. McGarty at La Crosse. Others like Dr. F. D. Weeks worked with the original preceptor, Dr. Dodd at Ashland, and have now taken over as preceptors.

After 31 years of experience in the field of undergraduate medical preceptorial teaching, the Wisconsin verdict is in favor of its continuance. The preceptorship is definitely not intended to duplicate the school experience but rather to complement it and provide students with the opportunity for a close

teaching relationship with a physician who is active in practice in his community. Under such a preceptorial regime, a student gets to see how medicine is practiced at the grass roots, away from the large medical center where his study has been concentrated. He gets to know first hand the responsibilities of a physician in community life, learns the economics of medical practice, and develops appreciation for at least some of the problems the general practitioner faces when he completes medical school and internship.

Every Fall a day and a half clinic for the preceptors is arranged at the Medical Center. Short papers covering recent advances in medicine are offered by members of the medical faculty, with particular emphasis upon the preclinical sciences, new faculty members are introduced and mutual problems dealing with the education of medical students are discussed. The 1958 Annual Preceptor Day was held November 21 and 22 at the University Medical Center. Friday afternoon and Saturday morning, technical sessions were held. The State Medical Society was host to the preceptors Friday evening, and Saturday they attended the Wisconsin-Minnesota football game. Some of the present-day preceptors are shown on the accompanying picture.



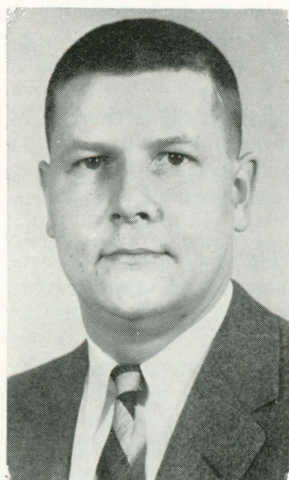
Standing, Dr. Phillips T. Bland, Westby; 1st row, Dr. Leslie G. Kindschi, Monroe; Dr. Matthew A. McGarty, La Crosse; Dr. Warner S. Bump, Rhinelander; Dr. Walter T. Becker, Wausau. 2nd Row, Dr. George F. Magnin, Marshfield; Dr. Merritt L. Jones, Wausau; Dr. M. L. Whalen, Bruce and Dr. Peter A. Midelfart, Eau Claire.

**Your cooperation is requested.** Send news of your activities and changes of address to:

Wisconsin Medical Alumni Assn.  
418 N. Randall Avenue  
Madison, Wis.



## Introducing Leigh M. Roberts, M.D.



son, Psychiatric Consultant at the Wisconsin Child Center in Sparta and has been in private practice in Madison.

Dr. Roberts' primary reason for returning to an academic setting is the opportunity to do research. Consequently one semester each year will remain relatively free from teaching and service responsibilities to allow him time to conduct research. His particular field of interest is the effects of tranquilizing drugs on psychopathology. During the remaining half-year Dr. Roberts will be administratively responsible for in-patient services at University Hospitals. His teaching role will be in relation to third year medical clerks and first year psychiatric residents on in-patient service.

Dr. Roberts was born and educated in the State of Illinois, receiving his M.D. degree at the University of Illinois in 1947. His internship was spent at St. Francis Hospital in Peoria and two years were spent in General Practice in Macomb, Illinois before serving three years as medical officer and flight surgeon with Marine and Naval units in the United States, Japan and Korea. Dr. Roberts is married and has four children.

## Foreign Visitors

### In Training At The Medical Center

The University of Wisconsin Medical School has at different times had students from practically all areas of the world visiting its laboratories under world-wide exchange programs sponsored by various organizations. Many of these organizations, like the U.S.P.H.S., sponsor highly qualified scientists from outside the United States to work in medical laboratories in this country. Some are here to get specialized training in a specified problem, others to study under a highly qualified investigator in their particular field of interest. These students may spend anywhere from six months to a year or two under one of these grants.

A partial list of these advanced training students shows that Europe, Asia and South America are currently represented at the University.

Seven foreign students are engaged in active cancer research at McArdle Memorial Laboratories. Asia is represented by three students: Yoshio Aizawa from Japan; Pandurang N. Joshi and Kanai L. Muk-

herjee from India. Four countries in Europe have each sent one student to Madison: Hans H. Adam from Germany; Carl Henrie de Verdier from Sweden; Robert Logan from Scotland; and Alfredo Margreth from Italy.

The Department of Pharmacology and Toxicology has two students. Homero Campos of Lima, Peru, is engaged in problems relating to Catecholamines and Gerardo De Leon of Rizal, Philippine Islands, engaged in the study of drug metabolism.

Thailand, particularly Bangkok, sends two students: Amara Kitiyakara, doing research in cytochemistry of striated muscles in the Dept. of Pathology and Poonsri Amaragetu, who received his M.D. degree from Siriraj Medical School in Bangkok, and is now doing research in the Anatomy Dept.

Korea and China are each represented by one student. Chin S. Chung from Seoul, Korea, received his M.S. and Ph.D. degrees at the University of Wisconsin and is now working in the Department of Medical Genetics. He is currently in Hawaii with Newton Morton, working on research on the genetics of interracial crosses. Ging-Hsi Wang, whose home address is Taipei, Taiwan, China, is a Research Associate in Neurophysiology.

## Committee To Study Needs Of The Medical School

From time to time it is desirable to review existing programs and to take a look at future needs in the Medical School. During the past few years many additions to the faculty and a number of new programs have been initiated. In some instances existing programs have diminished while others have expanded. A Committee on Long Range Planning has been appointed at the Medical Center to set forth a program for the next five years. The Committee will consider such problems as: the adequacy of the existing research program and new research programs which should be initiated; the adequacy of the current educational program and new areas in medical education that should be developed; the desirable organization and size of the Faculty; the relationship of the Medical School with the Graduate School and other programs across the University. In addition the relationship with the physicians of the State and other health programs and the integration of Madison hospitals into the educational program must be considered.

The Committee will submit a report of their recommendations within six months.

## Expanded Student Health Program

Beginning February 1, 1959, a program to offer comprehensive medical care for the spouse and dependents of undergraduate students at a reasonable cost and without the traditional referral procedures will be instituted. Medical care for adults will be offered through the Student Health Department under the supervision of Assoc. Prof. John H. Flinn. Full obstetrical care will be available, as well as pediatric care, including well-child conferences.

This program was developed through harmonious discussions with the State Medical Society, including the Dane County Medical Society. The objective is to make available a greater diversity and volume of teaching material.



# Alumni Capsules

**Ken Lemmer**, '30, Dept. of Surgery at University of Wisconsin and past President of the Wisconsin Medical Alumni Association, reports on a number of Badgers, ex-Wisconsinites, Wisconsin Alumni and friends of the school whom he met on last summer's Arizona trip. The list includes—**Dr. and Mrs. Delbert Secrist**, '34, and their talented swimming family. **Dr. and Mrs. Selby Mills**, '33, who is in Internal Medicine in Phoenix. **Dr. and Mrs. Maurice Richter** (and their recently acquired Desert Ranch Home). Maurice studied his Radiology at University Hospitals. **Dr. and Mrs. Dermond Melich**—whom many will remember was in the Department of Surgery here during World War II. **Dr. and Mrs. Jackman Pyre**, internist, and all girl family 'revue'. **Dr. and Mrs. Dave Welton**, '35, really of North Carolina, visiting Arizona on research mission and study program.

**Capt. G. L. Calvy**, Chief of Medical Service at the U. S. Naval Hospital, St. Albans, Long Island, N. Y. won the Edward Rhodes Stitt Award for 1958. The award is made annually by the Association of Military Surgeons for the "Most outstanding contribution by a member of the association in the field of antibiotic medicine." Capt. Calvy, a '33 graduate of the University, obtained his medical degree from Washington University School of Medicine.

**Henry W. Aufderhaar**, '57, finished his internship at Madison General Hospital this past summer and has joined **James C. Russell**, '46, in the practice of Medicine in Ft. Atkinson, Wis.

**Lowell J. Smythe**, '51, writes the Alumni Office that he and his wife, the former **Gwendolyn Swiggum**, '52, are leaving Middletown, Ohio, where they have been the past year. Lowell has now been made Director of Laboratories, St. Olaf Hospital, Austin, Minnesota.

We are sorry to hear that **Paul H. Hemphill**, '28, has had a series of retinal hemorrhages which destroyed his central vision and he has been forced to retire. His address is 105 Alberta Ave., Eugene, Oregon.

**John Barlow Youmans**, '19, was honored by having a symposia given in his honor at Vanderbilt University, Nashville, Tenn. Dr. Youmans is Dean of the Vanderbilt University Medical School.

**Richard Holder**, '55, has apparently decided in favor of Wisconsin's climate as he left South Carolina and returned to Black River Falls, Wisconsin where he joined the Krohn Clinic.

**Jack Wishart**, '41, writes the Alumni Office that **Donald M. Willison**, '41, has recently joined the staff of the Midelfart Clinic in Eau Claire, Wis. and that Dr. Willison has been elected President of the Eau Claire, Dunn, Pepin County Medical Society.

**Elizabeth Grimm**, '43, informs us that she will be out of the state of Montana for a year, beginning January 1, but we have no more details as to where she is going, or what she is going to do.

**Milton J. Senn**, '27, of New Haven, Conn., has been named a Vice-Chairman of the 1960 White House Conference on Children and Youth. Dr. Senn and other members of the Committee attended a preliminary planning meeting held in Washington, Dec. 16-18, at which time they met with the President of the United States.

**John Mielke** and **Patrick J. McCormick**, '57 graduates of the Medical School, have been appointed to fellowships at the Mayo Foundation in Rochester, Minn.

Friends of **Joe Lalich**, '38, Professor of Pathology at the Medical School, might be interested in his explanation of why he didn't get a deer during hunting season, but a slightly built secretary in the same department did. Obviously Dr. Lalich wasn't hunting in the right places.

**Donald B. Cohen**, '53, writes friends that he plans to finish a medical residency at Michael Reese Hospital, Chicago, July 1, 1959. His present address is 4845 Hull St., Skokie, Ill.

We are sorry to hear of the illness of **James S. Hess, Jr.** '24. He informs us that he is no longer in practice, due to a coronary two years ago. His address is 143 Division St., Mauston, Wis.

**Duane Block**, '51, and **John M. Schroeder**, '51, now at University Hospitals in Cancer Research Section, met recently in Detroit for a brief visit. Duane is an industrial physician and Director of the Medical Department at Ford River Rouge Automobile plant in Detroit.

**Thomas M. Gocke**, '47, is leaving the Erie, Pa. area, where he has so ably served as Area Chairman for the fund drive, as of Jan. 1. His new title and address is Director of Medical Education, St. Mary's Hospital, Rochester, N. Y. Congratulations, Dr. Gocke!

**W. A. Dittman**, '53, has finished a residency training in Hematology at Salt Lake City and is now with the Veterans' Administration Hospital in Albuquerque, New Mexico. Home address—2227 Inez NE.

**O. E. Tjoflat**, '29, has been working very hard on the Library Fund Drive in the St. Louis area and now reports being hospitalized — do hope these two facts are not relative. He was hospitalized in early December with a common duct obstruction and acute pancreatitis, with the possibility of surgery. Best wishes for a speedy recovery.

**Merna Mary Warne**, '38, Route No. 1., Falmouth, Virginia, writes "I am no longer in active practice. After having toiled for the VA. for nearly ten years, I retired because of illness last spring and my sole professional activity now is confined to reading medical journals."

**Wier Horswill**, '52, in Gyn-Ob residency at University Hospitals reports that **Emil Mueller**, '52, has moved his practice from Spooner to Boscobel, Wisconsin. Two additional members of the '52 class report completion of residencies. World War II veteran, **David A. Smith**, has completed his at Milwaukee Hospital and moved to Janesville, Wis., where he will practice internal medicine. **D. J. Freeman**, returned to Wausau to resume his medi-



cal practice with the Freeman medical group, having completed a four-year residency in internal medicine and cardiovascular diseases at the Wisconsin General Hospital.

**Mischa Lustok**, '35, informs us that **Sidney K. Wynn**, '39, has recently been appointed Chief of the Department of Surgery at Mt. Sinai Hospital in Milwaukee. Incidentally, Mischa is Chief of Medicine at the same hospital, which makes it "all U.W."

We wonder if **Robert L. Brisbin**, '55, chooses his areas of practice for their romantic sounding addresses. He moved from Opa Lacha, Florida to Wahiawa, Oahu, Hawaii. Sounds like a beautiful place to visit — his address is 129 Walker Ave.

**Arthur C. Hansen**, '29, who is Medical Director of the A. O. Smith Corp. in Milwaukee, is busy with the Lincoln Sesquicentennial Committee of Wisconsin. Dr. Hansen is Co-Chairman of the Committee, working on plans for the 1959 celebration.

**George Nitz, Jr.**, '54, informs us that he has accepted a residency in Ophthalmology at Leland Stanford Hospitals in San Francisco, Calif. He is married to the former **Carle Young**, '56, and they have two children, a girl — 3½ and a boy — 1½.

**Harry E. Kasten** of 419 Pleasant St., Beloit, Wis. has been ill since September of the past year. He has a circulatory disturbance and is not feeling quite up to par yet. Dr. Kasten is a 1919 graduate of the University and a '21 graduate of Rush.

**Jack Clifford**, '41, has returned to Madison and the University of Wisconsin for Cardiology training. Jack had been practicing Internal Medicine in Twin Falls, Idaho for the past few years.

**Stoughton White**, '39, wrote Joe Lulich from Kansas City, Mo. He would like information about U. of W. Alumni in the Kansas City area, and reports "about 5 kids or so."

## Faculty Capsules

It is with deep regret that we inform the many friends and former students of **Dr. T. H. Bast**, Profes-

sor of Anatomy, of his critical illness. Dr. Bast entered University Hospitals in late October.

**Hans H. Reese**, Neurology Department, was invited by the Federal Republic of Germany to a special study tour of German Universities, including Berlin (West). The program was prepared by the Public Health Division of the German Federal Ministry of the Interior at Bonn, and included undergraduate and postgraduate medical education and trends of researchers in medicine.

**Konrad Akert**, Physiology Department, gave one of the major addresses at the 50th Anniversary of the Swiss Neurological Association in Basel, Switzerland in November. The trip was sponsored by the American-Swiss Foundation for Scientific Exchange, Inc.

**Gerald A. LePage**, Oncology Department, has resigned his post here to accept a position at Stanford Research Institute. Dr. LePage received his Ph.D. from the University here, specializing in bacteriology and biochemistry.

**F. A. E. Eyster**, Emeritus Professor of Pharmacology and Physiology, has been awarded the Medical Research Association of California Senior Scientist Award for 1958. Dr. Eyster is now living in Florida, where he is pursuing his long-time interest in astronomy. His address is Matlatcha Rural Station, Fort Myers, Florida.

**Charles Heidelberger**, Oncology Department, has been appointed to a five-man committee to advise the U. S. Atomic Energy Commission on the Cancer Research Program of the A.E.C.

**O. Sidney Orth**, a 1942 Alumnus and Chairman of the Anesthesiology Department, was guest speaker at the Brazilian Congress of Anesthesiology in Recife during November. He visited with various members of the department now living in Rio de Janeiro and Sao Paulo.

**Chester M. Kurtz**, former member of the Medical School faculty, has been named Manager of the Veterans' Administration Hospital at Ft. Bayard, New Mexico. Dr. Kurtz has been Director of Professional Services at the V. A. Hospital at Albuquerque, New Mexico.

Congratulations are in order for **Herman Shapiro**, class of '32, Associate Clinical Professor in Medicine, and **Gwendolyn Harris**, Assistant Superintendent of Nurses.

They were married Dec. 4, 1958 in Dubuque, Iowa. Unfortunately they were involved in a traffic accident on their way to Miami, Florida. However, at last report, they were both recuperating nicely.

**Francis M. Forster**, Chairman of the Dept. of Neurology, was recently elected Vice-President of the American Board of Psychiatry and Neurology.

**Philip P. Cohen**, Chairman of the Physiological Chemistry Dept., has been appointed to the Biochemistry Section of National Institutes of Health.

The Alumin office has just heard that **Dr. Josephine Novak**, '47, has changed her name to Pallin. Apparently congratulations were in order sometime in the past.

**Greg L. Gallo**, '57, has begun practice in Oconomowoc, Wis. Dr. Gallo served a rotating internship at Parkland Memorial Hospital, Dallas, Texas, and recently completed a postgraduate course in Anesthesia in Madison.

**Wallace Marshall**, '33, moved his offices from Two Rivers, where he has practiced for the past nine years, to Watertown, Wis. Dr. Marshall is the author of a book, "Essentials of Medical Research."

Two 1956 graduates have recently completed their residencies and begun the active practice of medicine. **Lloyd M. Baertsch**, a native of Fountain City, has been added to the staff of the Hayward Clinic. He recently completed a general practice residency at Hurley Hospital, Flint, Mich. **Curtis C. Knight**, opened his first office at Verona in early August. Before locating in that city, Dr. Knight interned and served a year of surgery residency at Madison General Hospital.

## In Memoriam

Wm. P. O'Malley, '28,  
Milwaukee, Wis.

Alton J. Schmitt, '31,  
Sheboygan, Wis.

Howard M. Walker, '27,  
Dodgeville, Wis.

Robt. Y. Wheelihan, '28,  
Rivera Beach, Fla.