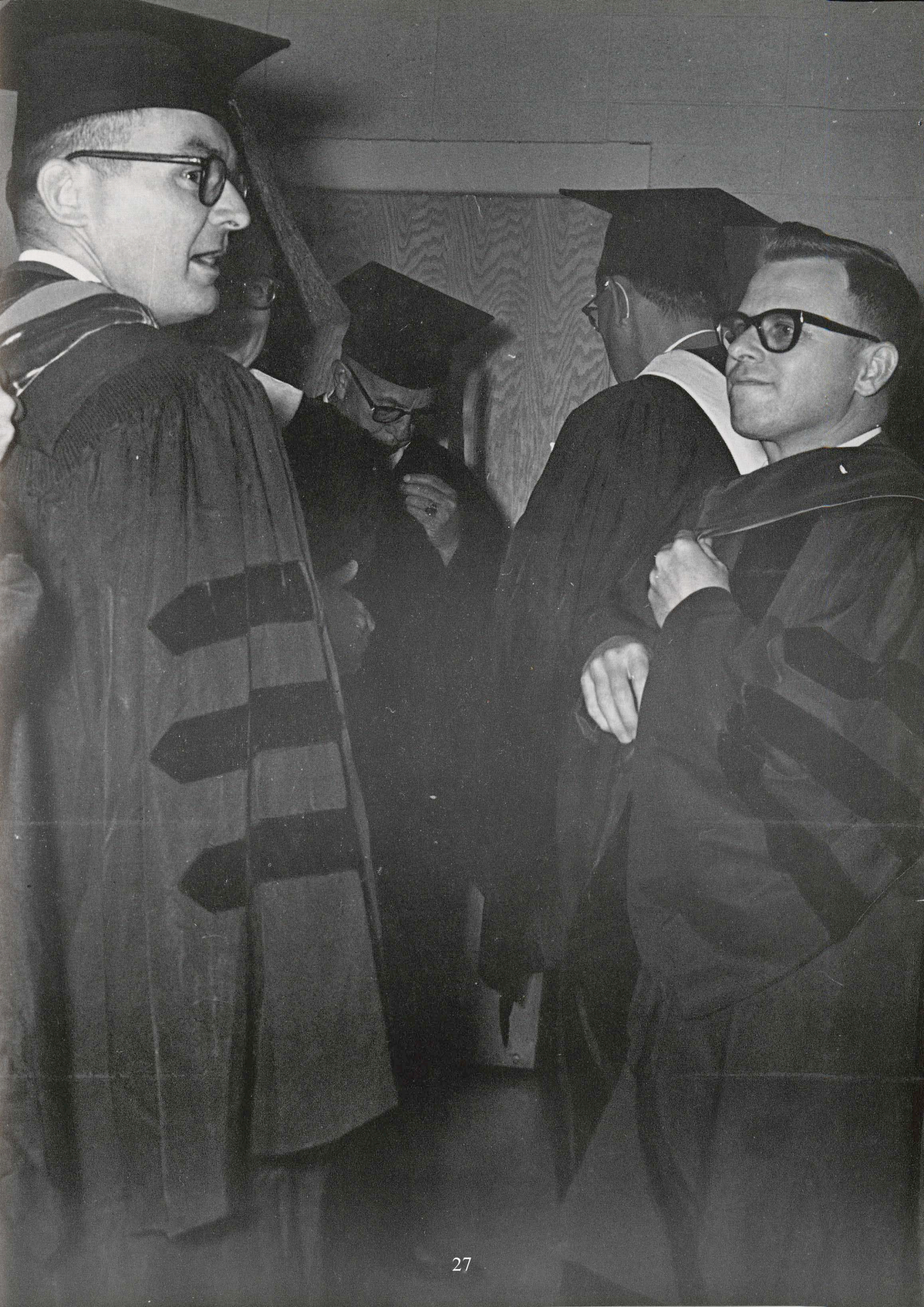




ADMINISTRATION

... Our shadow-selves, our influence, may fall
Where we ourselves can never be.

HAMILTON



The Administrative Officers



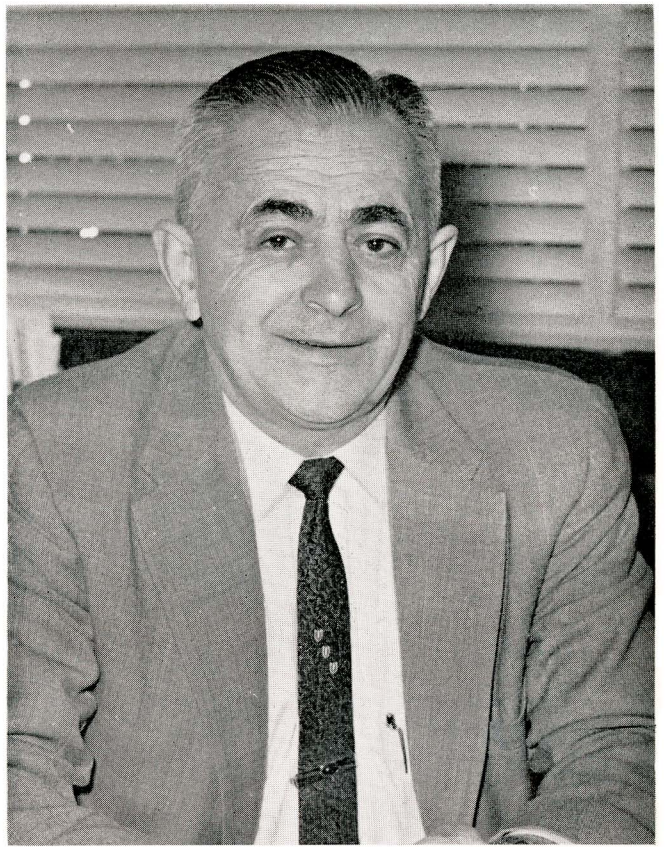
JAMES J. McLAUGHLIN
REGISTRAR, DEAN, SCHOOL OF ARTS AND SCIENCES



L. G. STONE
DEAN, SCHOOL OF TEACHER EDUCATION



RICHARD DELORIT
DEAN, SCHOOL OF AGRICULTURE



B. J. ROZEHNAL
DEAN OF STUDENTS



WAYNE WOLFE
ASSISTANT TO THE PRESIDENT



NANCY KNAACK
ASSOCIATE DEAN OF STUDENTS



GERHARDT BOHN

Division of Agriculture



The laboratory



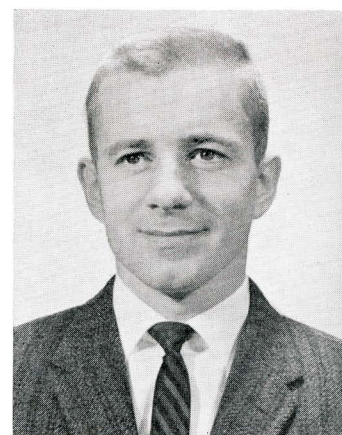
JAMES C. DOLLAHON



R. VERN ELEFSON



EDWIN P. EBERT



JOHN E. FOSS



and demonstration farm was dedicated in October



MELVIN L. WALL



RAYMOND WALL



MARVIN D. THOMPSON



THORVALD E. THORESON



LELAND S. WITTWER

Division of Arts and Sciences

Chemistry



WILLIAM C. KRUEGER



ROBERT H. POLZIN



O'NEAL MASON



THEODORE F. SETTERQUIST



PETER MUTO

Geography



JOHN G. MOSHER

Physics



EARL G. ALBERT



RUTH OLDENBURG



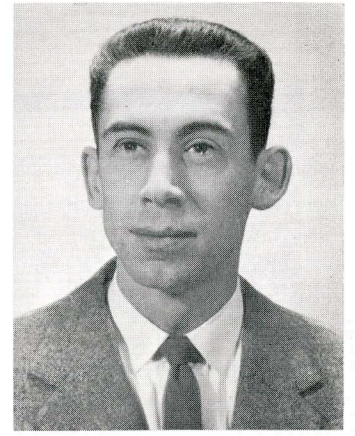
MARIE CAROLAN



LILLIAN GOUGH



GLEN P. JUNKMAN



ROBERT WILLSON



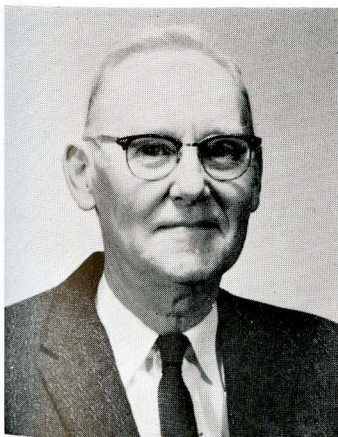
ERNA YACKEL

Mathematics



VIRGINIA AKINS

Biology



B. H. KETTELKAMP



MARTIN LAAKSO



CATHERINE M. LIENEMAN



ROBERT J. TONN

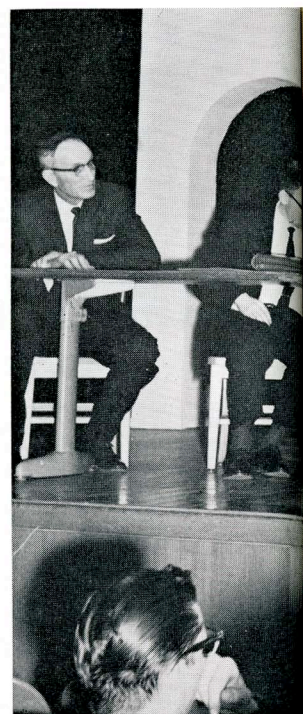
Political Science



ROBERT L. BERG



ALAN LOVE



This is the way



WALKER D. WYMAN

History

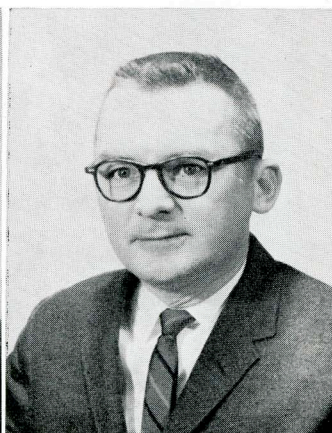


EDWARD N. PETERSON

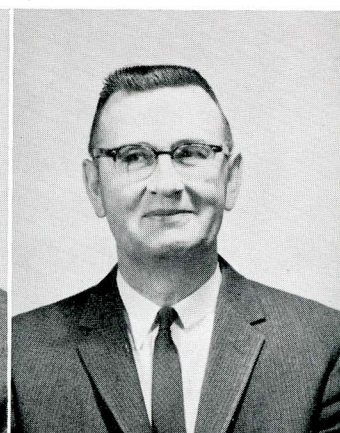
Economics



PERRY B. FREDERICKS



RICHARD K. DARR

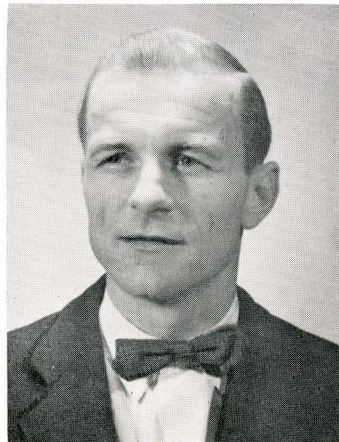


GILBERT N. SMITH

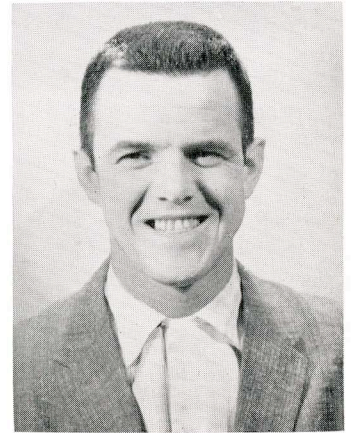
Physical Education



I see it — grass roots politics conference



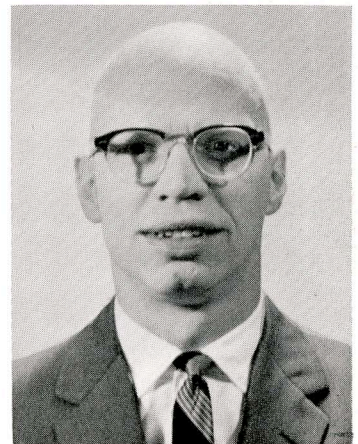
OWEN B. BERGRUD



BYRON D. JAMES



EMOGENE NELSON

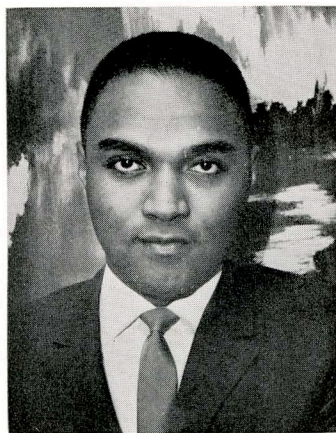


DONALD A. PAGE

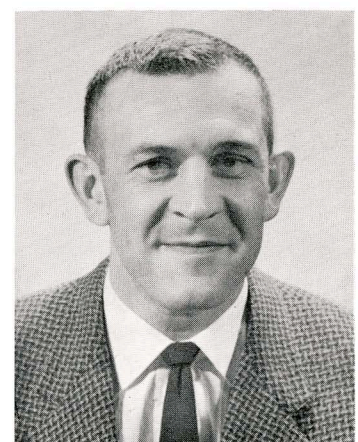
Sociology



CLARENCE A. STORLA



ROBERT B. BAILEY



FRANCIS C. POLSFOOT

Music



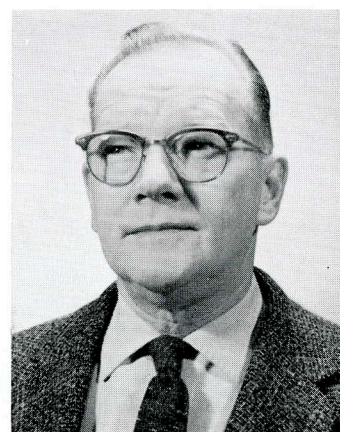
WILLIAM W. ABBOTT



CAROLYN DEJONG



CONRAD DEJONG



NICHOLAS J. JADINAK



CHAUNCEY B. KING



DONALD BORCHARDT

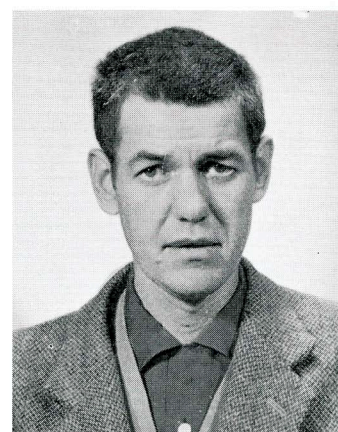


BLANCHE E. DAVIS

Speech



DIANE KERN



JOHN A. OOSTENDORP



JAY W. GOSSNER
French



ERNST F. JURGENS
German

Foreign Languages

Journalism



JAMES D. HARLESS



DONALD F. BROD



WILLIAM C. AMMERMAN



JAMES G. CRANE



KURT L. WILD

Art

English



FRANCIS P. CHISHOLM



WALTER J. ENGLER



MARION E. HAWKINS



VERA M. MOSS



EARL E. LEWIS

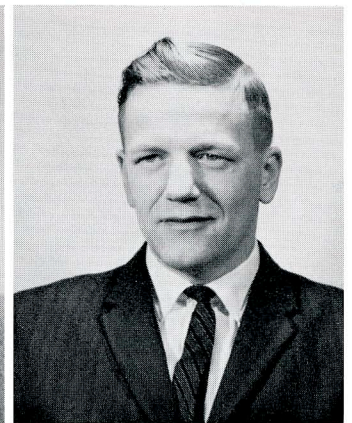


FLOYD E. OVERLY

Library



RICHARD A. COOKLOCK

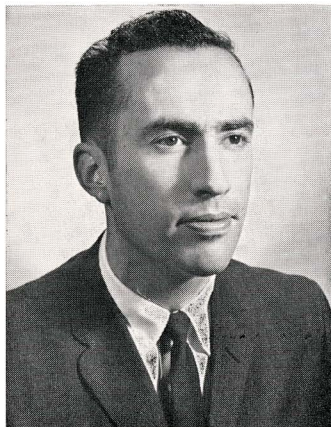


CLIFFORD FORTIN

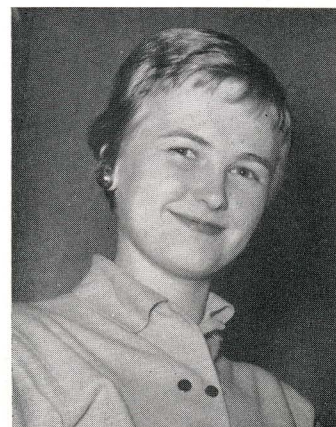
Special Services



ROBERT BROCK
Director, Student Center



RICHARD C. REYNOLDS
*Social Science
Director, Student Center*



LOIS E. BOWMAN
*English
Hathorn Hall Counselor*



AMY NELSON
Nurse



GEORGE W. CURTIS
*Psychology
Prucha Hall Counselor*



AUDREY ADAMS
Library



AMY FULLER
Library



WILLIAM G. MANNING
*Social Science
Stratton Hall Counselor*

Division of Education



Mexico — Via Student Teacher



PHILIP S. ANDERSON

Psychology



WILFRED C. HARRIS

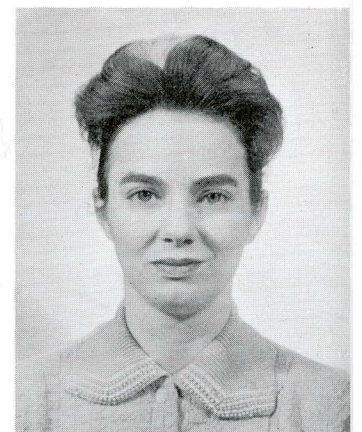
Secondary Education Supervisors



CARLTON E. BECK



ALLAN A. SIEMERS



GRACE B. HINRICHS

Elementary Education Supervisors



ROWLAND D. KLINK



ANN DUBBE



LEONA M. COOPER



RONALD L. LAYMON



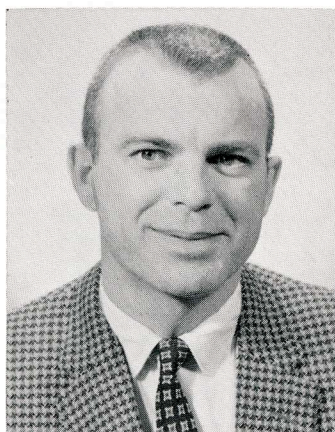
ROBERT B. KRUEGER



OPAL A. KNOX



NAUNDA TIETZ



JAMES P. MURPHY



WANDA MAURER



Office Staff

CLETUS HENRIKSEN
BUSINESS MANAGER



Row One: Linda Solie, Joyce Englebert, Mary Alice Cain, Betty Stoflet, Eunice Larson; Row Two: Laura Johnston, Martha Rundle, Alice Davison, Joanne Morrow, Thelma Franklin; Row Three: Bea Hanvelt, Janice Edlin, Leona O'Connor, Jerry Anderson, Judy Tostrud, Phyllis Czech, Melvin Germanson.



Row One: Henry Petersen, Willian Olson, Hans "Pep" Hanson, Floyd Fisher, Raymond Smith, Warren Deans, Knute Peterson; Row Two: Henry Smith, Herman Fritsch, Ray Foley, Russell Olson, Gordon Hanvelt, Ben Pechacek, Arnold Johnson, Raymond Meyer, Myrtle Robey, Leo Fischer, Florence Delander, Marvin Killian, Henry McKahan, Willis Schmidt.

Maintenance



NEIL BARRON
CHIEF ENGINEER



SPECIAL EVENTS

. . . Coming events cast their shadows before.

CAMPBELL



Homecoming 1960



It's up to us . . . Harland, Rog, and Mouse



Here come the girls . . .

Thursday, September 29
Kick-Off Convocation
Presentation of Queen Candidates

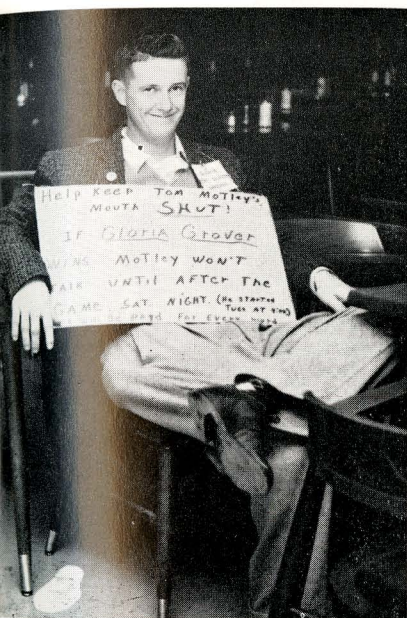
Tuesday, October 4
Judging of Window Decorations
Woody Herman Concert

Wednesday, October 5
Kangeroo Kourt

Thursday, October 6
Skit Convocation: Louis Daniel, guest speaker; Mel-O-Dons;
College Choir; Pep Band; Cheers; Organization Skits.

Friday, October 7
Judging of Window Decorations
Pancake Supper, Student Center
Pep Fest at Ramer Field: Jerry Moore, emcee; Cheers; In-
troduction of Football Players; Queen Coronation; Snake Dance;
Bonfire; Record Dance.

Saturday, October 8
Parade
Smorgasbord, Student Center
Homecoming Game with Oshkosh
Coffee Hour, Student Center
Homecoming Dance, featuring the music of Bobby Shannon
and his Orchestra.



And Motley WAS silent



Our Queen Candidates

*Glorie Grover, Nancy Fox, Sue Dorgan,
Kay Holmes, Edie Walker, Criss Jelen*

All sorts of contests . . .



We've only had fifteen . . .



Woody Herman



It was a 'grave' situation

Building spirit for . . .



The Vets added their cheer



The Mel-O-Dons harmonized



I dreamed I led the yells . . .



I crown thee . . .

Homecoming Eve . . .



Dr. 'A' lead the band



Queen Edie

Squash

"To thee River Falls, we pledge all our love, And to thy banner floating above. . ."

Opening with the pledge song at the kick-off convocation, the 1960 Homecoming, with its 'Squash Oshkosh' slogan, was a memorable event for students, faculty, friends, and alumni. The entire campus felt the spirit and knew that this was a special time — a week made for Homecoming.

Weeks of advance planning was done by co-chairmen Harland Carlson, Roger Christy, and Ray 'Mouse' Metzger.

There are many things we can't forget . . . frosh liming the R. F. on the mound . . . balloons floating over the field after the game kick-off. . . pancake eaters. . . red goblet days . . . putting last-minute touches on a float . . . sitting on the curb as the parade went by . . . beautiful Queen candidates . . . being pulled down Main Street with the snake dance . . . returning alumni . . . and Edie's smile.



Early Saturday morning



Traffic-stoppers

In the contest for the trophy to be awarded to the club acquiring the most points during the year, the first prize for window decorations was given to the Pinochle Club, second to the Sitzmarkers, and third to the Young Democrats.

The Pinochle Club received first prize for their lawn decoration, with the Sitzmarkers and Young Democrats receiving second and third respectively.

In the float division, the FFA was awarded first prize, Prucha Hall rated second, and the Sitzmarkers received third.



More traffic — stoppers . . .

Oshkosh

Enthusiatic Falcon fans cheered the team during the game with the Oshkosh Titans and, in spite of a R. F. defeat, everyone enjoyed dancing to the music of Bobby Shannon.

And suddenly it was all over, forcing students to return to the reality of classes and studies, with fond memories of the week locked in their minds.



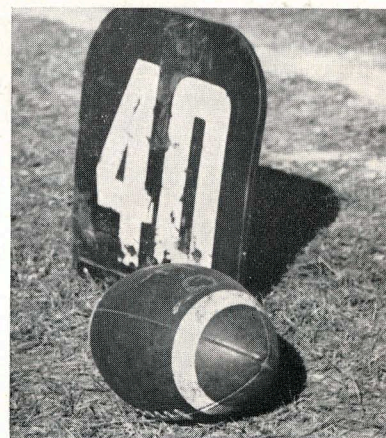
Now DO something



Falcons vs. Titans



Tension



And suddenly it was over

Winter Carnival

Our King Candidates



John Rassbach, Mick Rogers, Ray Metzger



Carl Huebner, Warren Rogers, Maurice LeBreck



Royalty — Mick Rogers and Criss Jelen, and Prucha Hall's sculpture

CARNIVAL CALENDAR

Thursday, February 2

F. F. A. Talent Show: Crowning of the King and Queen, Beard Judging.

Friday, February 3

Ski Outing at Trollhaugen, Dresser, Wisconsin: Supper, Song Fest, Dance.

Saturday, February 4

Treasure Hunt
Mixed Doubles Bowling Tournament
Carnival Midway, Student Center
Judging of Snow Sculptures
Chicken Supper, Student Center
Basketball Game, River Falls vs. Superior
Winter Carnival Dance, featuring the music of the Bluenotes.

Sunday, February 5

Church
Basketball Game, Intramural Team vs. W.R.A.
Water Ballet, Water Exhibition, Ice Skating
"Heaven Knows Mr. Allison," movie sponsored by the Social Committee.



*Of course it's going to snow . . .
Carnival chairwomen Judy Daft, Judy Monchilovich,
Nancy MacNeil*



Bowling — at this hour of the morning?

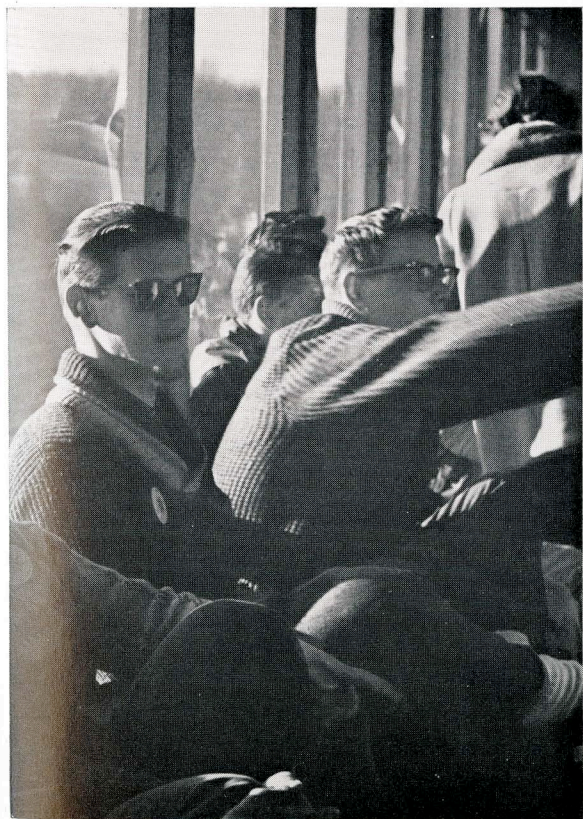
CONTEST WINNERS

Talent Show: *First*, Rodney Nelson, drum solo; *Second*, Clair Brohaugh, interpretive reading; *Third*, Duane Kuhn, organ music; *Most Entertaining*, Francine Cockett, hula dance.

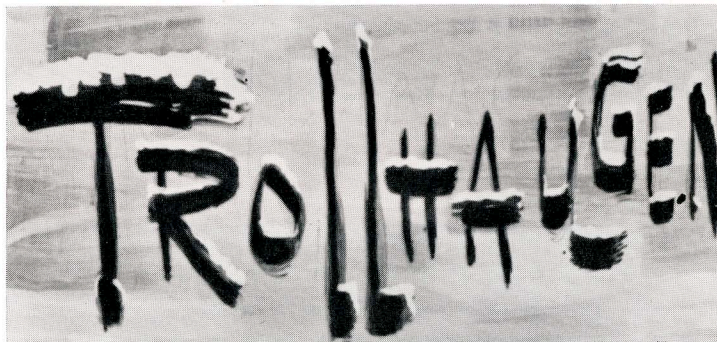
Beard Contest: *Longest*, Jim Lukasiewicz; *Heaviest*, Fred Colman.

Treasure Hunt: Pinochle Club

Snow Sculpture: *First*, Prucha Hall; *Second*, Vet's Club; *Third*, F.F.A.



This is fun — even without snow . . .



Criss and Mick

'Feed the Falcon'

With most of the building program on campus completed, the Student Foundation Committee devoted itself this year to putting on the finishing touches.

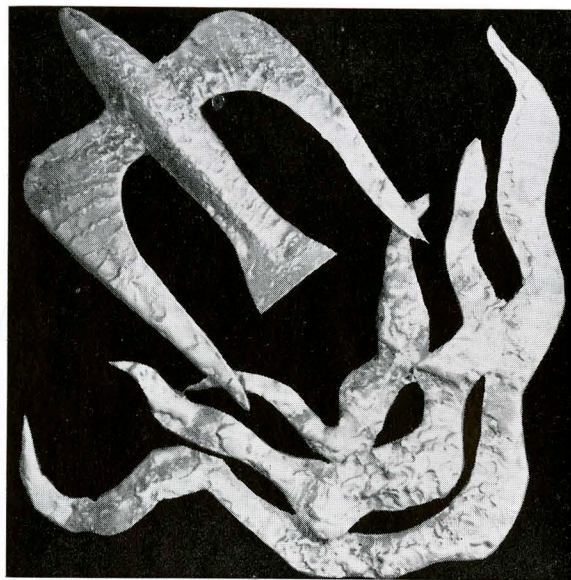
The Foundation goal was to "Feed the Falcon Fund" to "Bring B.B. to R.F." "B.B." of course, is the Bronze Bird, the name adopted by students and faculty for the proposed sculpture of a Falcon to be done by John Rood, internationally known sculptor, and placed on the north exterior of Karges Center.



The junior class added to the fund



Old 'face — full' Ace



The Falcon

Highlight of the Foundation Committee's drive was the fall auction in the Student Center. When auctioneers Ed Schlumpf and Pat O'Connell sold the last live chicken and after the last of the "gambling booths" had been closed, the final tally showed a Foundation Week (November 7-12) profit of \$319.03. A \$309 check from the junior class and proceeds from the A.W.S. Valentine Formal, approximately \$150, added to the fund.

In addition, dances, a "Pennies for Freddy" jar in the cafeteria, the College Bowl, and the Faculty Frolics, which netted an amazing \$826.01, brought the yearly total to more than \$1700 and the Bronze Bird winged closer to River Falls.



Now who will gimme two?

...And Variety



They danced at the Cabaret



Ronnie Eastman entertained



Waltzin' Matilda . . .



International songfest