

Research Images

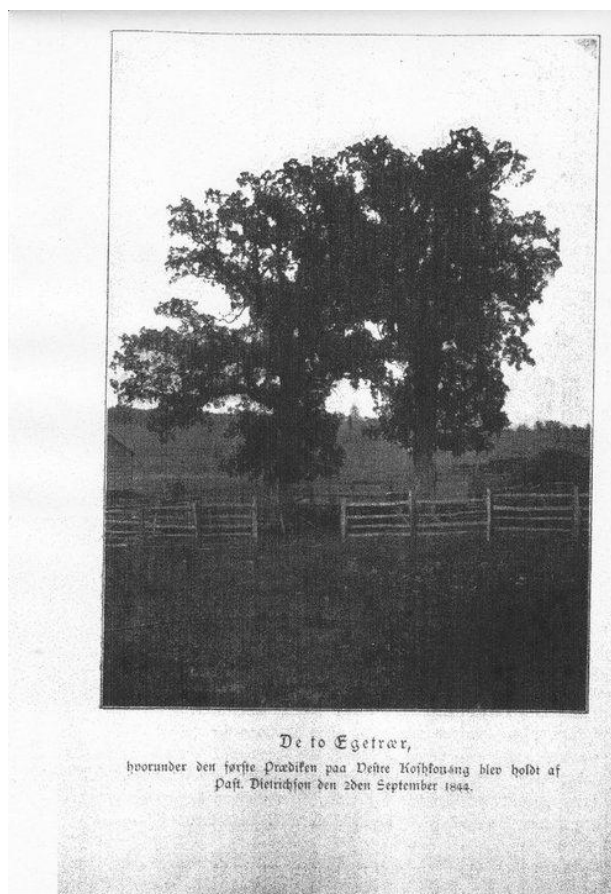


Figure 1. Image from "Minde fra Jubelfesterne paa Koshkonong" 1894. Oak trees on the Juve farm where Dietrichtson held his impromptu service.

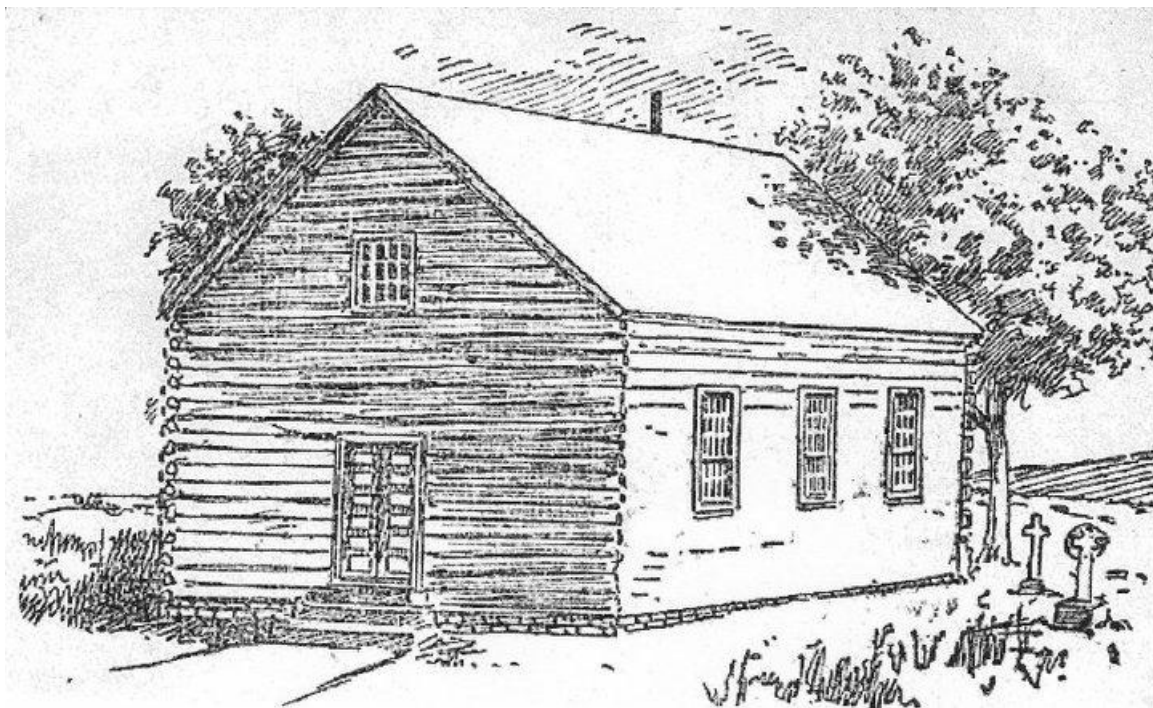


Figure 2. Sketch of the original log church in the western area of Koshkonong. The original Eastern Church was similarly constructed. (Chicago Tribune, December 2, 1894)



Figure 3. East Koshkonong Lutheran Church. Built in 1858, rebuilt in 1893. (Whi # 25479, Dahl Andreas Larson, 1874)



Figure 4. The octagon church at West Koshkonong replaced the original log church. (Whi # 35886, unknown, 1885)

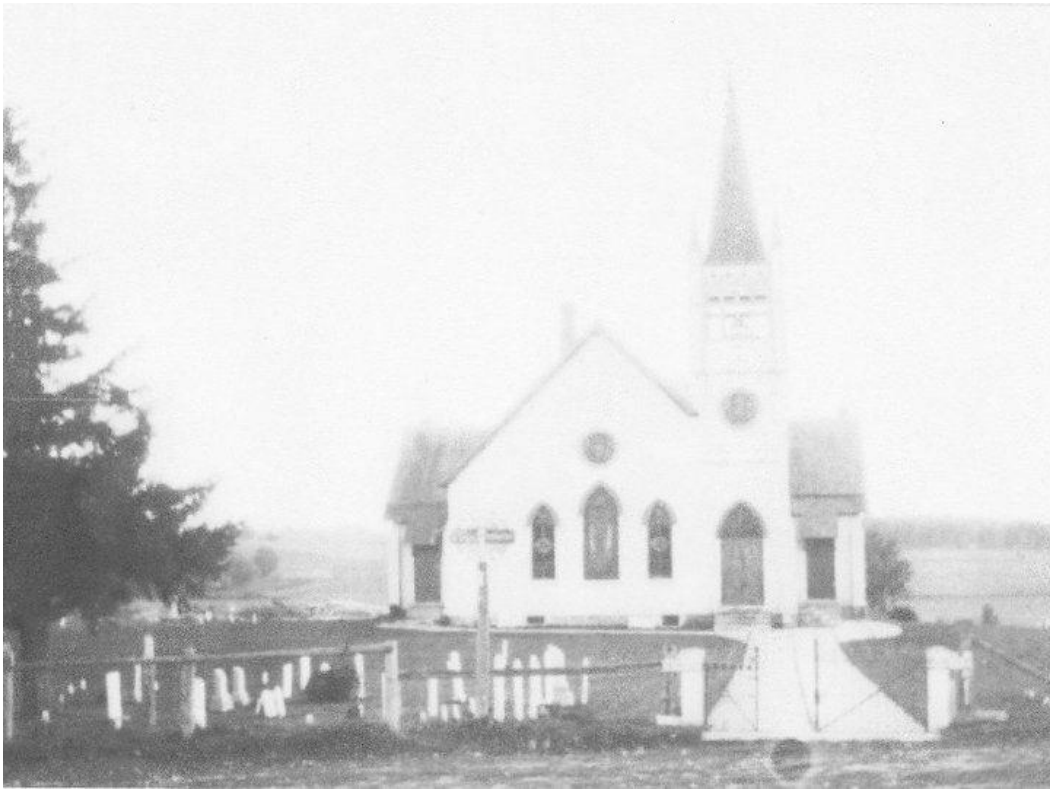


Figure 5. West Koshkonong Church. (Whi 35885, Unknown, September 1925)



Figure 6. The first West Koshkonong Church. (Photo Credit: Mandy Puntney. November 20, 2010)

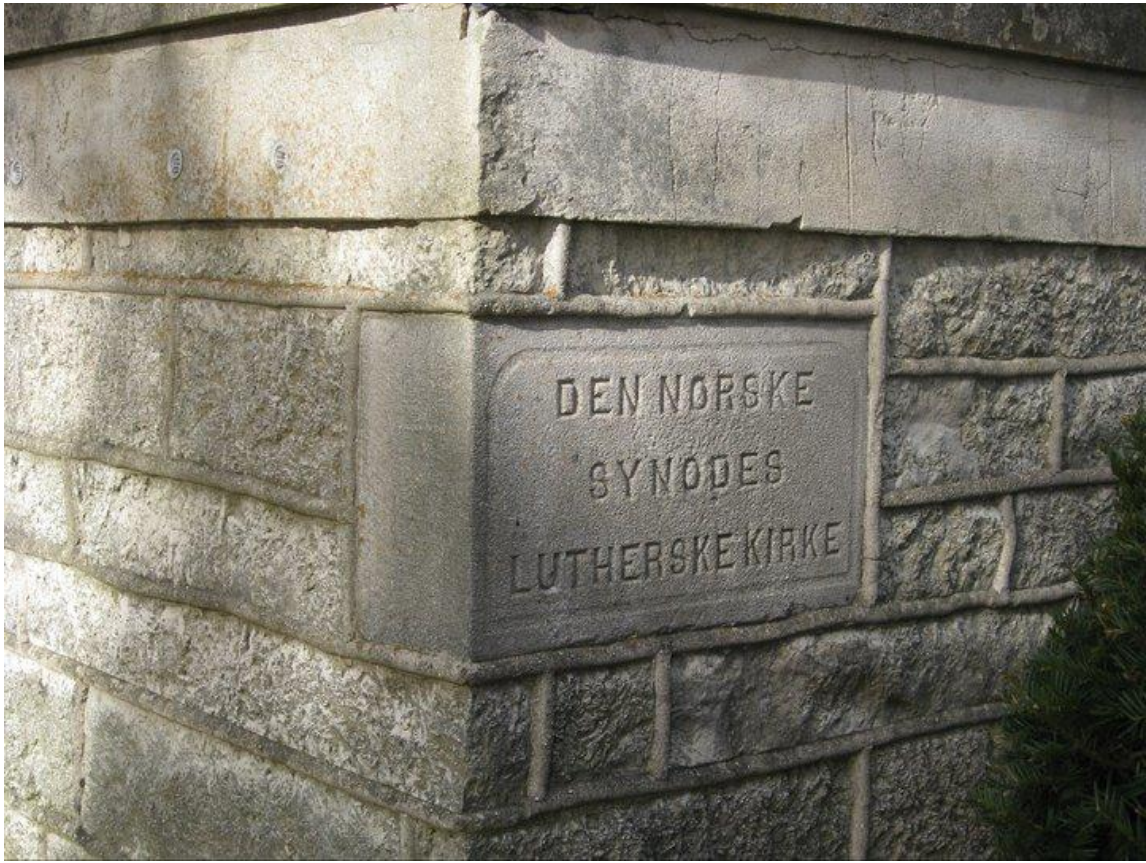


Figure 7. Cornerstone at the second West Koshkonong Lutheran church.

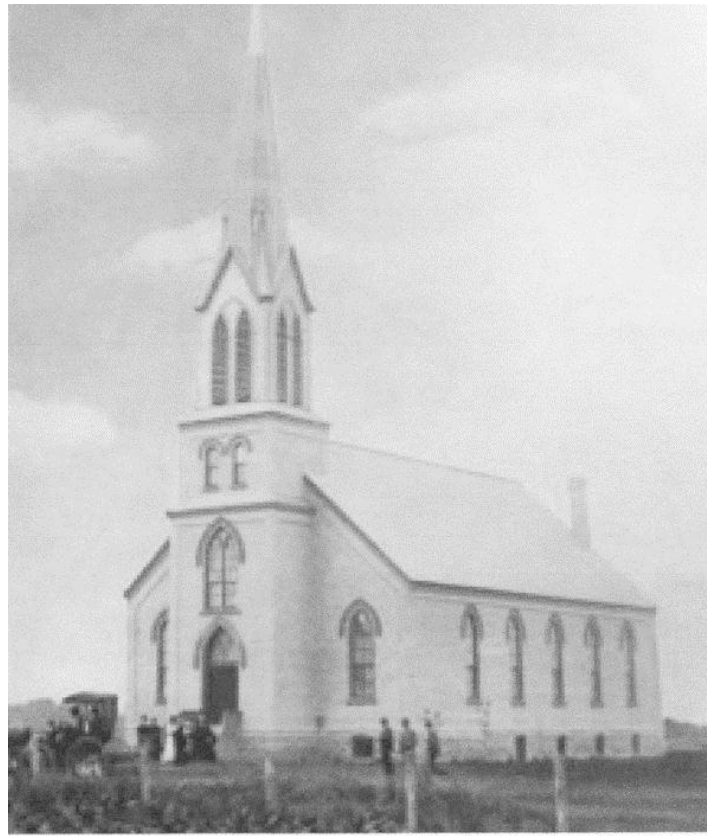


Figure 8. West Koshkonong Lutheran church. Photo taken from www.westernkoshkonong.org/church-history/



Figure 9. The second Western Koshkonong Lutheran church. (Photo Credit: Mandy Puntney. November 20, 2010)

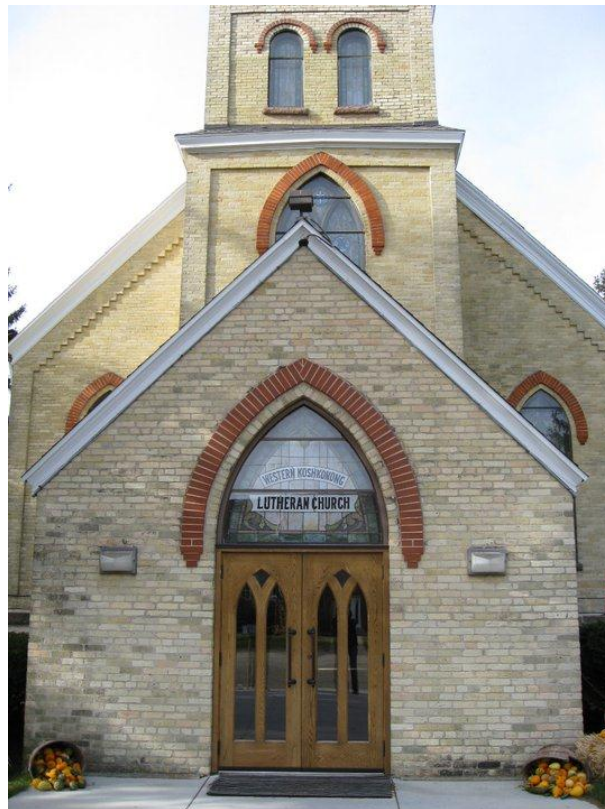


Figure 10. The second Western Koshkonong church entrance, added in 1961. The stained glass was supplied with protective coverings in 1974. (Photo Credit: Mandy Puntney. November 20, 2010)



Figure 11. The gravestone of Knud A. Juve, on whose farm Reverend Dietrichson held service under two great oak trees. Located at the first Western Koshkonong Evangelical Lutheran church graveyard. (Photo Credit: Mandy Puntney. November 20, 2010)



Figure 12. Juve gravestone at second Western Koshkonong church. (Photo Credit: Mandy Puntney. November 20, 2010)

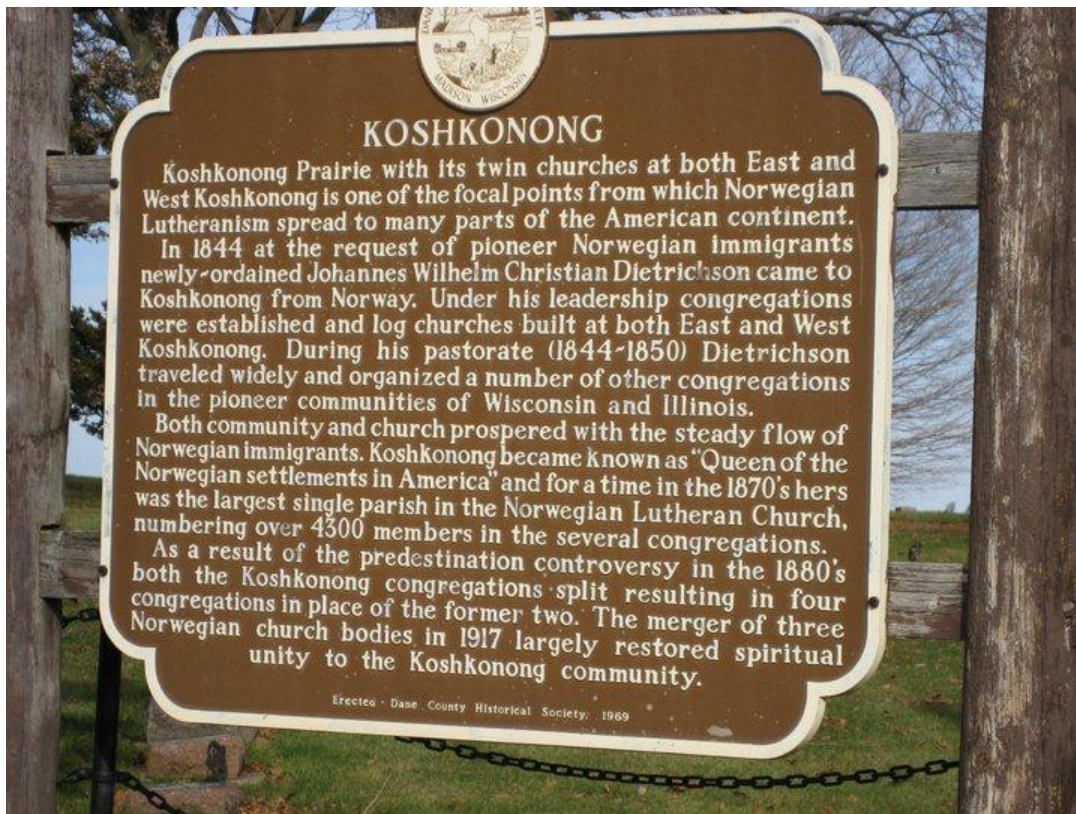


Figure 13. Historical marker between the two eastern churches. (Photo Credit: Mandy Puntney. November 20, 2010)



Figure 14. Image from *Minde fra Jubelfesterne paa Koshkonong* 1894. The first East Koshkonong Church.

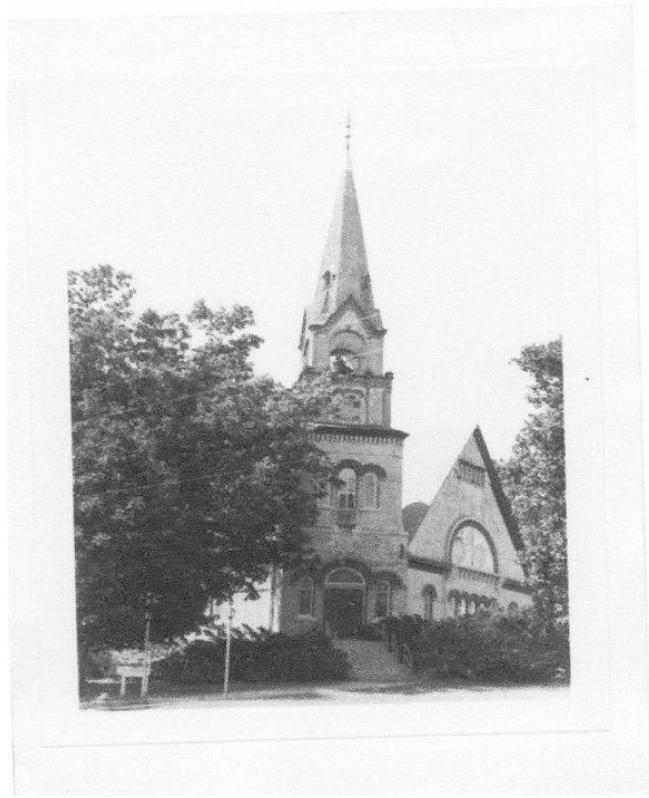


Figure 15. First East Koshkonong Lutheran Church. (Ahi # 4743 Wisconsin Historical Society photographer, 1979)

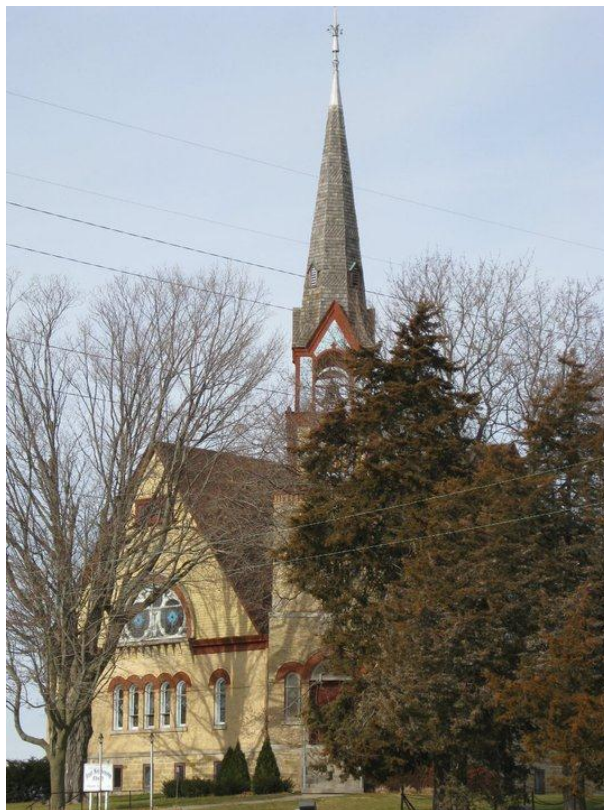


Figure 16. (Photo Credit: Mandy Puntney. November 20, 2010)



Figure 17. (Photo Credit: Mandy Puntney. November 20, 2010)

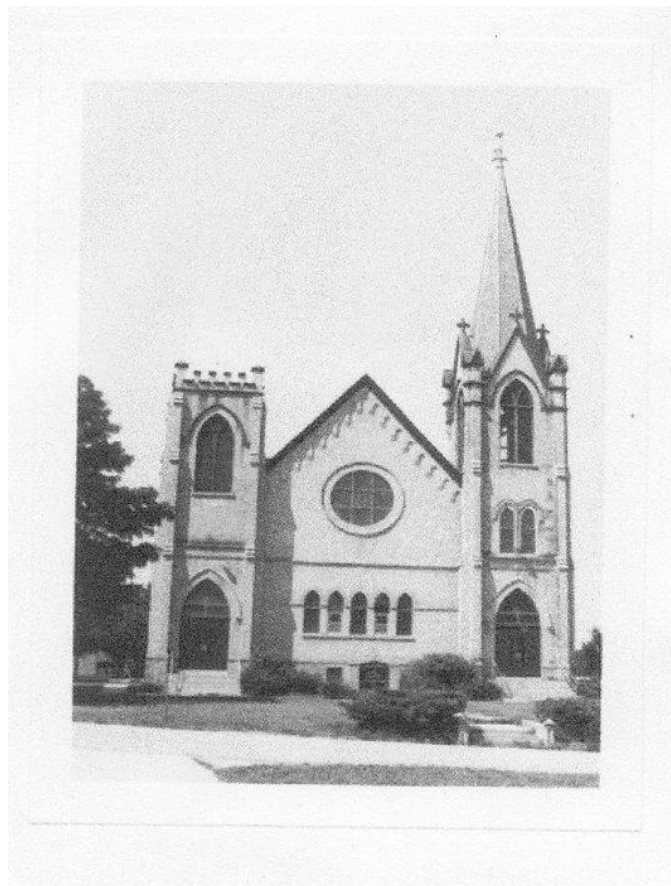


Figure 18. Second East Koshkonong Church. (Ahi # 4744, Wisconsin Historical Society photographer, 1979)



Figure 19. Second East Koshkonong Church today. (Photo Credit: Mandy Puntney. November 20, 2010)

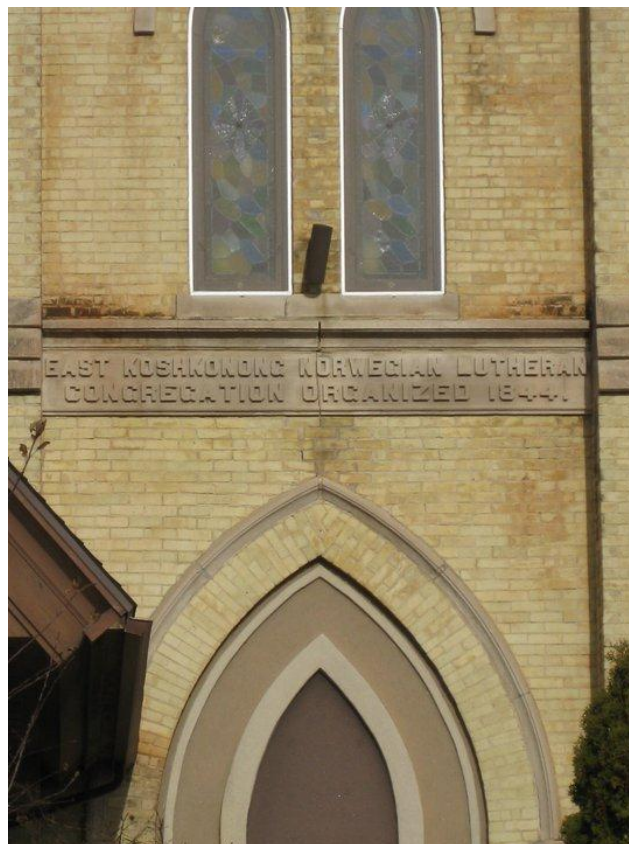


Figure 20. The West Koshkonong Church on the hill, organized by Reverend Ottesen in 1892. The inscription reads "East Koshkonong Lutheran Congregation organized 1844". (Photo Credit: Mandy Puntney. November 20, 2010)



Figure 21. Graveyard behind the east churches. (Photo Credit: Mandy Puntney. November 20, 2010)



Bedrud-Olson Farmstead Ahi # 4749

Figure 22. Bedrud- Olson farmstead, house. (Ahi # 4749, Della Rucker, 1997)



Figure 23. The home on the Bedrud-Olson farmstead. (Photo Credit: Mandy Puntney. November 20, 2010)



Figure 24. Bedrud-Olson farmstead, dairy barn. (Ahi # 4750, Della Rucker, 1998)



Figure 25. The dairy barn on the Bedrud-Olson farmstead has been renovated in recent years. (Photo Credit: Mandy Puntney. November 20, 2010)



Figure 26. This historical marking on the premises of the old Hauge Log Church describes the church's founding and construction. (Photo Credit: Patrick W. Smith. November 14, 2010)



Figure 27. This gravestone at the Perry Lutheran Church Cemetery shows the hardships that the settlers of the mid-19th century had to endure. (Photo Credit: Patrick W. Smith. November 14, 2010)



Figure 28. The gravestone of Hauge Log Church founder Arne Ruste has been restored. Old mingles with new, offering fresh perspective on the importance of historical monuments in America. (Photo Credit: Patrick W. Smith. November 14, 2010)



Figure 29. This plaque adorns the front of today's Perry Lutheran Church. The church wasn't completely finished until 1861, and wasn't used until 1858. (Photo Credit: Patrick W. Smith. November 14, 2010)



Figure 30. This plaque adorning the front of the old Hauge Log Church displays 1852, the year the structure was completed. (Photo Credit: Patrick W. Smith. November 14, 2010)

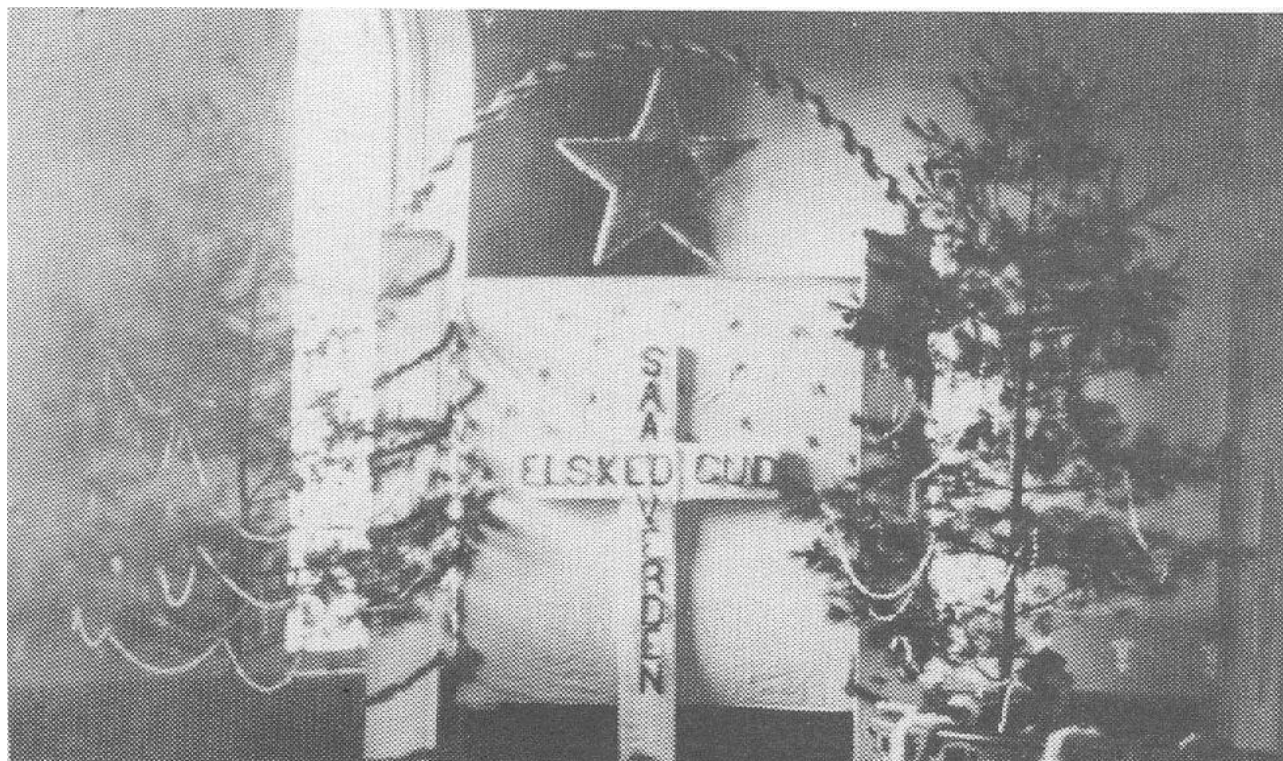


Figure 31. One of the first altars used at the Perry Lutheran Church. (Perry Historical Center, 1994, 192)



Figure 32. The altar of the old Hauge Log Church. (Photo Credit: Patrick W. Smith. November 14, 2010)



Figure 33. The altar of the Perry Lutheran Church in 1881. (Perry Historical Center, 1994, 193)



Figure 34. The altar of the Perry Lutheran Church in 2010. (Photo Credit: Patrick W. Smith. November 14, 2010)



Figure 35. Gravestone of Knut K. Syverud. (Photo Credit: Helen Boldt. November 20, 2010)



Figure 36. Syvrud family plot marker. (Photo Credit: Helen Boldt. November 20, 2010)



Figure 37. East Blue Mounds Lutheran Cemetery, former location of the church (Photo Credit: Helen Boldt. November 20, 2010)

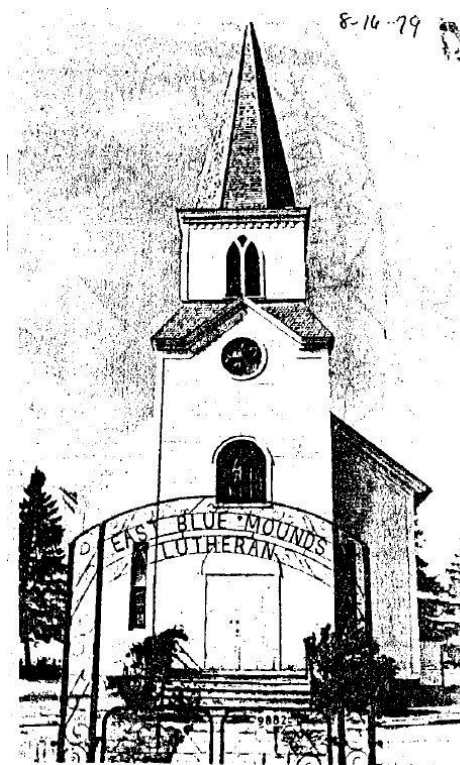
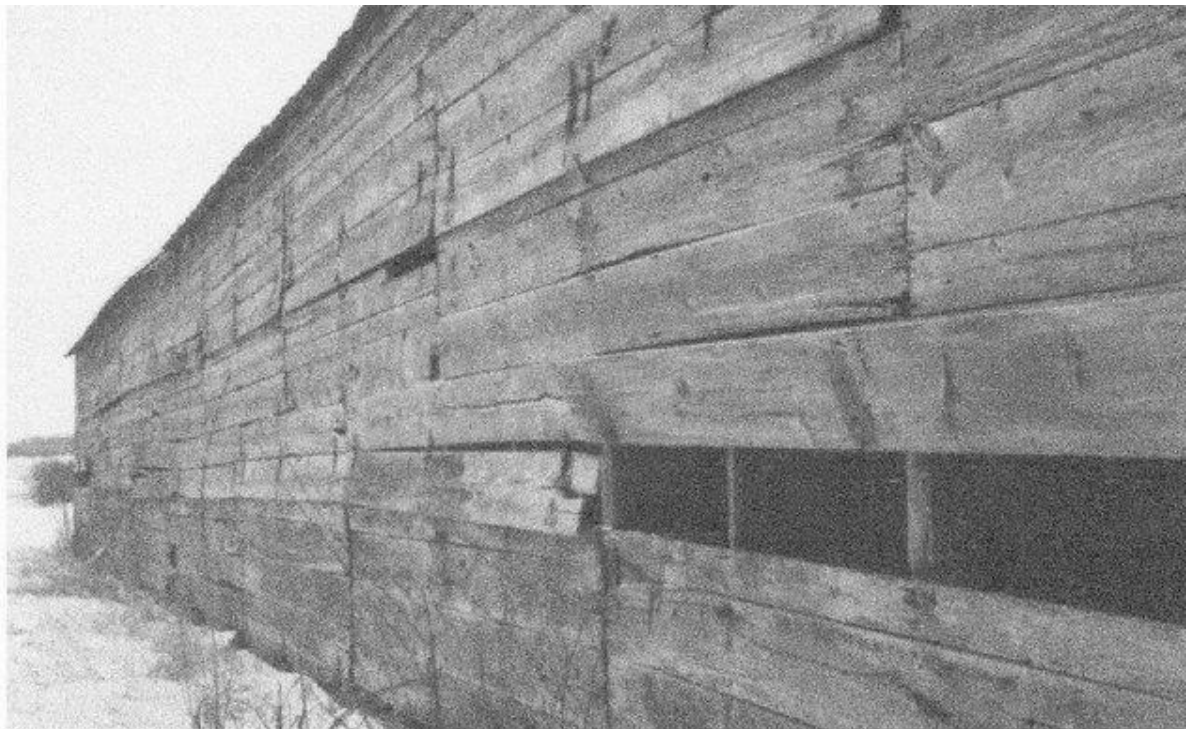


Figure 38. East Blue Mounds Lutheran church, early 1900s. (Retrieved from the Blue Mounds Historical Society, December 8, 2010)



Figure 39. Barton Road. (Photo Credit: Helen Boldt. November 20, 2010)



Bedrud-Olson farmstead, curing shed Ahi # 142599

Figure 40. Bedrud-Olson farmstead, curing shed. (Ahi # 142599)



Figure 41. The tobacco curing shed on the Bedrud- Olson farmstead. (Photo Credit: Mandy Puntney. November 20, 2010)



Figure 42. Bedrud-Olson farmstead, stripping shed. (Ahi # 142620)



Figure 43. The tobacco stripping shed and garage (in foreground) on the Bedrud- Olson farmstead. (Photo Credit: Mandy Puntney. November 20, 2010)



Figure 44. Contemporary expression of Norwegian culture. (Photo Credit: Helen Boldt. November 20, 2010)



Figure 45. Contemporary expression of Norwegian Culture. (Photo Credit: Helen Boldt. November 20, 2010)