

– Theatre
Thespians
Tired



The Little Theatre . . .

. . . is where the dimly seen faces in an audience are first a terror, then a world full of understanding to which you speak confidently.

. . . is where hard work, tiredness, and long hours contain an elusive excitement.

. . . is where stirring a pot of glue is an art known to few.

. . . is where mouse-brown hair becomes golden and glitters strangely.

. . . is where you say a line (that always fell flat at rehearsals) one night, and suddenly know what it always meant.



Now—this man is old, so we have to do something with that 20 year old chin!

. . . is where a needle and thread become as important as a star.
comes a person you and others know.

. . . is where a petite freshman carries a hammer and becomes a carpenter.

. . . is where a cultivated accent becomes second nature.

. . . is where a piece of canvas, a few boards and a great deal of paint becomes a flat.

. . . is where a many-times painted flat becomes the wall in an aristocratic home.

. . . is where stepladders, old clothes, paint hats and energetic arms become the setting for a musical.

. . . is where a play has life for one, two or three nights, and then is finished (except inside the people who produced it).



First Japanese, now Mexicans — why don't we do something Italian?

The Season – 1958-1959

Otra Primavera	Rodolfo Usigli
	directed by Dr. Blanche Davis	
Ghosts	Henrik Ibsen
	directed by John A. Phillips	
Hedda Gabler	Henrik Ibsen
	directed by Honey Berg	
Elizabeth the Queen	Maxwell Anderson
	directed by Dr. Blanche Davis	
The Four Poster	Jan de Hartog
	directed by Carol Naiberg	
The Flies	Jean-Paul Sartre
	directed by E. Michael Fleming	
Cinderella	Children's Play
	directed by Margie Olson	



Are you sure you want ME to trim your mustache?



A man must learn to continue . . . even after it seems all is ended.



Why don't you and all the rest just let me be myself? . . .



Careful—we'll trap him yet.

"The play's the thing . . ."



I really don't know what it is like to belong to something



You haven't missed much.

Alpha Psi Omega

NEW MEMBER: I'll never remember my lines! Somebody . . . cue me, will you?"

Alpha Psi Omega is a national honorary fraternity. To it belong students of theatre, recognized by their co-workers as worthy of membership in River Falls' cast, Iota Beta. It tries to achieve a professional atmosphere in college theatre and attempts to serve as a nucleus group in production of college plays.

Main activities of River Falls' chapter of Alpha Psi this year included two formal initiations of new members into the fraternity, the establishment of Alpha Psi and Masquers as separate campus organizations and the winter quarter production of "Elizabeth the Queen" by Maxwell Anderson.



Row One: Dave Blank, Beatrice DeGidio, Carol Naiberg, Mike Fleming, Talia Starr, Sue Christenson; **Row Two:** Bernie Brohaugh, Al Krause, Ora Fast, John Phillips.

OFFICERS

President Michael Fleming
Vice-President Carol Naiberg
Treasurer Gerald Johnson
Advisor Blanche Davis

Masquers

MEMBER: "In high school I had the lead in the Senior Class Play — this year I've painted twenty-five flats brown!"

The second organization on campus concerned with theatre as an art form, Masquers attempts to provide an opportunity for beginning students in acting, stage construction, make-up and play production.

This year, Masquers severed ties with the local chapter of Alpha Psi Omega and established itself as a separate campus drama organization. Although the organizations function separately officially, members from both work on campus productions. When a Masquer has earned enough points through work on and back stage, he is entitled to become an Alpha Psi initiate.

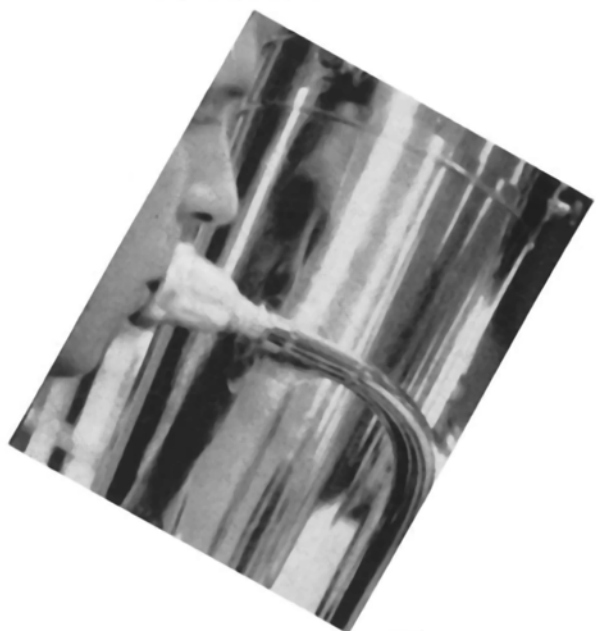
Officers

President James Hay
Treasurer Alan Case
Vice-President, Secretary Polly Knieff
Publicity Chairman Don Negard
Advisor Blanche Davis



Row One: Pauline Knieff, Mary Long, Lani Wolodko, Manley Olson; **Row Two:** Paul Kelly, Alan Case, Jim Hay, George Beestman.

— Music Maestro Musicians



Music majors and minors and all students interested in the field of music participate in the college's extra-curricular music activities. Students who are preparing for a career in music find band, choir, orchestra and the men's choir groups provide them with that necessary "practical" experience. Students who like music but can't find time to take courses in the field, join the music organizations.

The College Band, under the direction of William Abbott, is made up of a group of performers who secure a place in the organization by audition. This year, the band developed an extensive repertoire of modern instrumental music. The organization performs at college functions throughout the year, at football games, assemblies and at graduation in May. The band toured with the college choir this spring through northern Wisconsin.

The College Choir, directed by Chauncy King, also gains its members by audition. This year saw the choir presenting its annual Easter Sacred Music Concert, and singing the impressive "Emitte Spiritum" at Graduation.

The College Orchestra and Men's Chorus, under their director Nicholas Jadinak, are both relatively new organizations on campus. The orchestra, made up of interested students, faculty and townspeople, this year was mainly concerned with the development of its string sections. The Men's Chorus presented selections at several college functions this year.

Band

BAND PERSONNEL

OBOE
Patricia Grant
Irene Linde

FLUTE
Anne Adams
Karen Larson
Edith O'Mera

CLARINET
Marlene Czerwonka
Judy Daft
Roger Doty
James Esswein
Francis Granger
Meredythe Harris
Glen Hillestad
Joyce McKinley
Beverly Monette
Froydis Myhrwold
Jo Anna Paulson
James Poukey

Carol Reed
Mildred Seeger
Mary Suennen
Wayne Viitanen

BASS CLARINET
B. J. Rozehnal

ALTO SAXOPHONE
Harland Carlson
Jeanie Crownhart
Nancy Karras
Gloria Nilsen
Alan Webb

TENOR SAXOPHONE
David Nichols
Walter Skroch

MARJORIE WALLIN
BARITONE SAXOPHONE
Harold Havlik

BASSOON
Michael Drost

CORNET
David Bultman

Howard Heise
Doug Johnson
John Kirk
Jane McKinley
Marilyn Pearson
Vincent Peterson
Frank Rorvick
James Schwenk
Robert Winberg

FRENCH HORN
Kathleen Hartwig
Judith Johnson
John Rice
Virginia Rogers

PERCUSSION
Patty Ross
Janeth Taylor
Edward Thompson
Janet Whitmore

TROMBONE
Joseph Alms
Sandra Appleby
Dary Dado
William Holden

Neil Nordquist
BARITONE
Rae Buchholz
Thomas Gunderson
Verna Neumann
Elizabeth Wintermeyer

TUBA
George Berger
Gerhardt Fisher
Robert Johnson
Richard Muelemans
Charles Zellmer

STRING BASS
Donna Petterson

PERCUSSION
Judith Evenson
Kay Holmes
Marion Knipp
James Laue
Louis Pape



Choir

CHOIR PERSONNEL

FIRST SOPRANO
Millie Gustafson
Beverly Hanson
Kay Holmes
Bonita Jacobson
Janice Lundberg
Wilma Owens
Ardyth Soule
Marla Thompson
SECOND SOPRANO
Marilyn Gulickson
Jane Halverson
Meredyth Harris
Corinne Hribar
Diane Kuselik
Carol Murphy
Rita Murphy
Edith O'Mera
Judy Samuelson

Sandra Stoner
Patricia Wiff
FIRST ALTO
Delores Anderson
Bonnie Benson
Alma Bents
Carol Busch
Shirley Christenson
Lorraine Jacobson
Barbara Kraft
SECOND ALTO
Margaret Helgeson
Leila Johnson
Mary Long
Marge Olson
Sandra Paulson
Karma Utoft
Martha Wulff
FIRST TENOR
Bernie Feld
Marlin Feld
Howard Heise

John Phillips
SECOND TENOR
Joseph Alms
Clifford Danielson
Myron Jackson
Gordon Nordquist
FIRST BASS
Richard Muelemans
Dave Nichols
Neil Nordquist
Charles Norelius
Kenneth Shearrow
Bill Turner
Alan Voelker
SECOND BASS
Garry Blomberg
Lowell Mathison
Kurt Petersen
Norbert Teclaw
Edward Thompson
Charles Zellmer
Lynn Waterhouse



Madrigal Singers

*MAN ON THE END:
(Whispering) "Together! This
is close work . . . NOW!"*

The Madrigal Singers use a type of music which is uncommon. This music, which flourished in the 18th Century, usually sung by about eight people (the number in this College's madrigal group), requires great vocal skill for its performance.

Singing for their own pleasure, the Madrigal Singers become acquainted with this music and bring it to River Falls' campus. Their main concert, in addition to singing on tour, was given during the College's Fine Arts Festival in May.



Row One: Marge Olson, Phyllis Anderson, Marla Thompson, Millie Gustafson;
Row Two: Myron Jackson, Joseph Alms, Ed Thompson, Richard Meulemans.

Orchestra

SENIOR DIRECTING FIRST TIME: "I'm sure we can do this together."

Organized to provide students with the opportunity to hear and play music from many periods of musical history, the college's orchestra is relatively new to the campus. The group performs both orchestral and string arrangements.

The Orchestra gives one concert a year and meets once each week. It makes as a feature of its activities Senior Directing in which senior music majors and minors direct the Orchestra.

OFFICERS

President Richard Meulemanns
Vice-President Louis Pape
Secretary Pat Grant
Advisor Nicholas Jadinak



Row One: Oliver Humphrey, Catharine Abbott, Patricia Grant, Harland Carlson, Joseph Alms, Louis Pape; Row Two: Richard Meulemans, Ed Thompson, Wilma Owens, Carol Reed, Janice Lundberg, Merry Harris, William Abbott, Mike Drost, David Bultman.

Music Educator's National Conference



Seated: Phyllis Anderson, Meredythe Harris; **Standing:** Louis Pape, Joseph Alms, Ed Thompson, Charles Zellmer, John Kirk, Richard Meulemans, Harland Carlson.

*MEMBER: "Little
kids! Sing? Naturally?
They learn it! Pick it up!
Hear it places!"*

Music Educator's National Conference — is made up of future teachers of music, in the grades, high school. Problems that arise in teaching music are the concern of the M.E.N.C. Among its members, awareness of the goals of music education, what the music teacher can do, for and with his students, these are purposes.

Minneapolis Symphony Orchestra concerts were attended by this college's M.E.N.C. A dance, the Post Vacation Hop, sponsored by M.E.N.C., livened up a cold River Falls winter.

Officers

President	Charles Zellmer
Vice-President	Dixie Olson
Secretary-Treasurer	Marge Olson
Advisor	William Abbott

Words Words — Words

Saturday Morning 'B' Tournament New Debator



Good morning and welcome to River Falls. We hope you had a pleasant drive from Eau Claire.

Who ever heard of giving a speech at 8:00 on a Saturday morning — and they had to drive ninety miles for it — careful I can't laugh aloud.



We are here this morning to discuss the question —
Resolved: How can we best . . . umm . . . How can we best improve . . .

Improve - improve . . . I must relax - relax. Oh, yes now I remember! Improve our relations with Latin America — where!



The importance of this situation cannot be overlooked.

If Nixon wouldn't gallivant around creating riots, this wouldn't have happened to me.

The First Debate



In the August, 1958, issue of Newsweek, John Foster Dulles stated that . . .

Where is that */&*/& card — it must be here. Oh, no — when I straightened my card file this morning and threw . . .



The strained relations between the United States and Latin America are definitely hindering further . . .

I must have talked eight minutes. Why doesn't that stupid timer hold up the card.



And so you can see that good will tours by political leaders . . .

At last I'm finished. Why didn't I stick with ping-pong tournaments.

Pi Kappa Delta



Row One: Joseph Falkner, Bud Bergquist, Muriel Peterson, Mr. Oostendorp, advisor;
Row Two: David Madis, Louis Pape.

Public speaking, discussion, debate are the areas of forensics. Pi Kappa Delta is a fraternity honoring students who have performed in these with skill.

A special "Novice Debate Tournament" was sponsored by River Falls' chapter of Pi Kappa Delta in January. Managed by Pi Kap members, the tourney gave a chance for practice to new debaters here, from other schools.

Pi Kappa's Homecoming Luncheon for alumni members was held in November and of course, the chapter's annual Spring Banquet in late spring following the formal initiation.

DEBATOR: (To Partner) "This guy is slow on the rebuttal . . . Knock him flat with the Dulles quote."

Officers

President	Dave Madis
Vice-President	Kenneth Bergquist
Secretary	Muriel Peterson
Publicity Chairman	Louis Pape
Advisor	John Oostendorp

– Copy Coffee Cigarettes

From the other side of the door publications look like all gaiety and little work, little accomplishment except two cluttered offices, a great number of coffee cups and cigarette stubs, and often, some very late hours.

But once inside that door, working on the newspaper, magazine or yearbook, you know publications mean work, worry, deadlines that you nearly kill yourself to meet, and sometimes miss anyway, hours of planning, endlessly racking your brain for ideas.

The gaiety and cigarette stubs are the romance of publications and the cluttered office is its trademark. Behind all of this, behind that door are work and deadlines. These make newspapers, magazines and yearbooks, coffee cups, cigarette stubs and cluttered offices.



Pat Lind
Editor, Fall and Winter



Warren Rogers
Editor, Spring

Student Voice

Student Voice Staff



Seated: Anne Adams, Carol Truttchel; **Standing:** Ed Schlumpf, Pat O'Connell, Fred Gilbertson, Jim Laue, Judy Johnson.



William Finlan
Editor

Prologue

Along with the weekly newspaper and the yearbook (which sometimes takes a whole year to finish), students also write and publish a magazine which appears at the end of each quarter.

The **Prologue** contains graphic and literary art that is contributed voluntarily by the students. The editing is also a voluntary non-payment job. The magazine is something special to those who write, draw and edit and the payment is full when each issue is stacked ready for reading.

Although the Prologue is run differently than the other two publications, the following remark made by its editor is quite common to all editors. "This just won't work . . . Not at all. Not a soul around here would even look at it. Oh well, we'll run it anyway and see what happens."

'59 Meletean



Harriet Kettelkamp



Sue Christenson

Co-editors



Wayne Wolfe and James Harless
Advisors



Jim Laue
Sports Editor



Don Negard
Recording Technician, Narrator



Barbara Brickner
Editorial Assistant



William Hagestad
Editorial Assistant



Carolyn Brown
Editorial Assistant



Fred Gilbertson
Editorial Assistant



Wayne Harmann
Photographer



Beatrice DeGidio
Editorial Assistant



Don Blegen
Photographer

– Campaigns Constitutions Criticism

Student Senate

OFFICER: (To the Group) "You talk about student responsibility . . . What have students got to be responsible for? This I ask you now. Can we give them something to be responsible about?"

Much of the student end of River Falls' administration is held in the hands of the campus Student Senate. Made up of class officers, representatives at large, the Senate numbers some eleven students. It acts as representative of the students and their needs to River Falls administration, the Deans and President. Meeting every week in a usually smoke-filled room, basement of South Hall, the Senate handles its business, heads up the student body.

Curt Larson, Charles Swann, Mike O'Connell, Jim Benson, Jim Laue.





Patty Ross, Curt Larson, Sandy Kins, Arnold Kaluzny, Bob Nelson, Clarence Dulek.

As the Senate Constitution has it, "We, the students of Wisconsin State College at River Falls, aim through this Student Senate to promote the best interests of the college, and to develop a spirit of cooperation and good fellowship throughout the school." This, of course, is its purpose. Long meetings, much personal initiative and responsibility, this, they say, makes the Senate go.

Officers

President	Clarence Dulek
Vice-President	Curt Larson
Secretary	James Laue
Treasurer	Arnold Kaluzny

Hathorn Hall Council

*DORM GIRL AT DORM MEETING:
(Whispering) "Frankly, I'd rather go to
bed . . . NOT ME! PRESIDENT? Oh, no!"*

The "dorm," the first on River Falls' campus is run by the Hathorn Hall Council. Dorm activities, of its residents and the campus at large are planned and carried out by its Council. Hathorn Hall's famous post-football game warm-ups and dances are handled by the Council, it holds the Dorm's annual Town Girls' Slumber Party, for women students from River Falls—pillows, pajamas and all.

Dorm living, something new for about all Dorm residents, other problems personal and social, are discussed in weekly meetings. These programs are Council concerns.

Officers

President	Patty Ross
Vice-President	Gwen Schlough
Secretary	Kathy Hartwig
Treasurer	Dorothy Braun
Resident Counselor	Sylvia Fleming



Row One: Patty Ross, Miss Fleming, advisor, Dorothy Braun, Lani Wolodko; **Row Two:** Gwen Schlough, Jean Lindquist, Kathy Hartwig, Jane McKinley.

Stratton Hall Council



Row One: Lutifali Ansari, Curt Larson, Chuck Norelius, Mr. Sidles, advisor, Dale Wyss, Sherwin Gronlund, Arnold Kaluzny; Row Two: Jim Brill, Glenn Anderson, John Flentje, Wayne Sukow, Bob Vermillion, Gerald Mielke, John Gitter, Tom Overman.

DORM BOY: "This gets me, this does . . . How we going to hold meetings down here with no place to sit? The floor?"



Stratton Hall, River Falls' second dorm, gets its collective business done via its Council. Dorm policy, what to do for Homecoming, skits, who makes the posters, these: Stratton Hall Council concerns.

A float that came in second place last November, a Winter Carnival booth, Dad's Day Coffee Hour, Homecoming Open House, all things under the hand of the Council—dorm life and problems get their day too.

Officers

President	Charles Norelius
Vice-President	Arnold Kaluzny
Secretary	James Brill
Treasurer	John Flentje
Social Secretary	Lutifali Ansari
Resident Counselor	Craig Sidles

Foundation Committee

MEMBER AT FIRST MEETING: "Now we've got to make giving money sound like fun."

Composed of students and faculty members the Foundation Committee is mainly a money-raising organization. Its purpose is not quite so mercenary as it sounds — the Foundation Committee promotes fund-raising campaigns for campus additions and improvements.

Each year one week is set aside as Foundation Week. During this week various activities are planned which will be interesting and also bring in money.

This year the theme of Foundation Week was 'Sound As A Dollar,' and its main purpose was to raise money for a public address system for the new Student Union. Always a success financially and socially, Foundation Week is planned and promoted almost entirely by the Foundation Committee.



Jean McMillan, Dr. Klink, Dr. Knaak, Marion Haugen, Nancy Ingwell, Rae Buchholz, Dean Loree, Mr. Murphy.

Officers

Chairman	Dean Loree
Secretary	Rae Buchholz
Treasurer	Bob Nelson
Advisors	Nancy Knaak
	Rowland Klink

Social Committee

MEMBER: (Aloud) "This is what the Senate wants, so this is what the Senate'll get. Any questions?"

An organization established by the Student Senate, River Falls' Social Committee is concerned with this campus's all-school activities. Promotion and coordination of these is the Committee's business. And this, they say, is most certainly what it is.

Dances, end-of-term, Foundation Week, Winter Carnival, the Freshman Talent Show, jazz, the Chris Barber Concert, movies, "Animal Farm" and "Desire Under the Elms," all were sponsored by the Social Committee.



Row One: Carol Naiberg, Muriel Peterson, Karen Gatten; **Row Two:** Delores Anderson, James Bastian, Carol Jennings; **Row Three:** Carl Duch, Chuck Norelius, David Johnson, Dean Loree.

Officers

Chairman	Carl Duch
Secretary	Carol Naiberg

Union Board

BOARD MEMBER: "All right. It's a nice place, nice bricks, nice windows, nice rooms and all that. But just what are we going to do with it? That's the question."

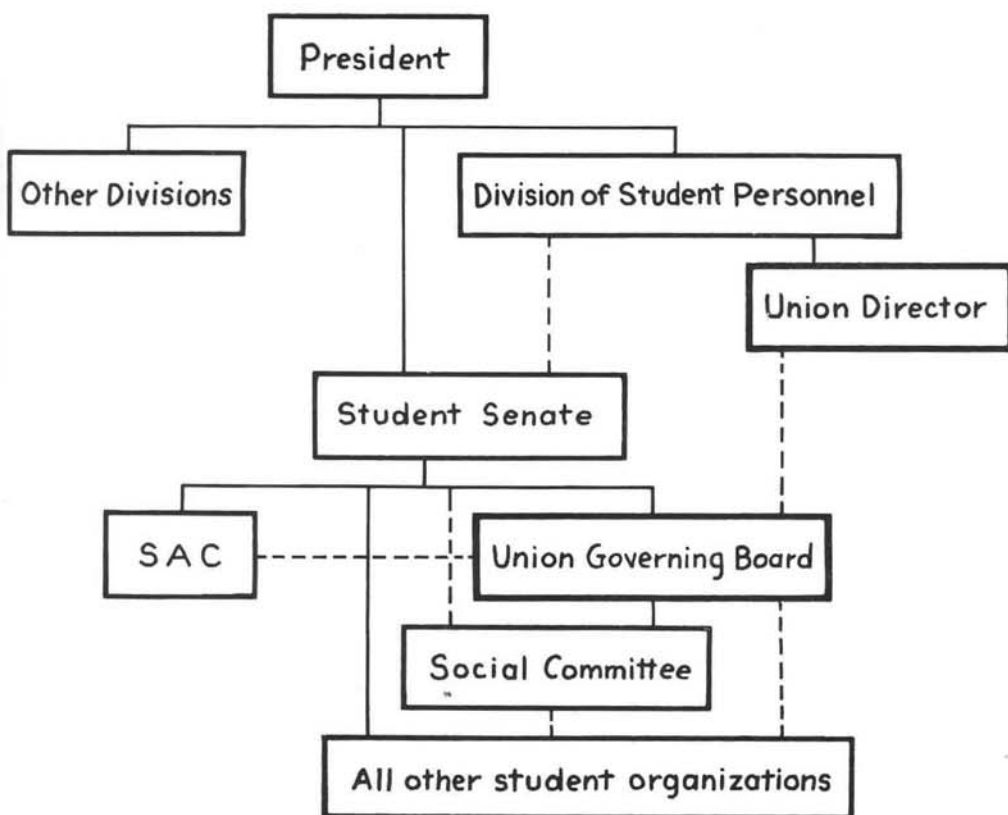
The name of the building itself implies some of the functions it serves: "Union." And in the formal statement of the Wisconsin State College Union, these functions are spelled out: "To provide a common life and a cultivated social program for students, to serve as an informal educational medium, to centralize and integrate college community effort and activity." The building is to be maintained as an instrument for realizing these functions.



Left to Right: Ed Pronchinski, Charles Norelius, Dean Knaack, Pat Lind, Craig Sidles, Dean Rozehnal.

What's inside the Union? Students will no longer have to eat their breakfasts, lunches and suppers in the basement of South Hall. The Union's dining room, seating about three hundred people, resembles a modern restaurant. A view of the campus through the east windows makes the new cafeteria a really pleasant center of this aspect of student life. Lounge areas, many times the size of what River Falls students have been accustomed to, meeting rooms, offices for the Student Senate and Union Governing Board, and a college bookstore, new to the campus, are all Union facilities.

Offices of **The Student Voice**, **Meletean** and **Prologue** will be found in the Union, as well as the college's central game area. Additionally, a snack bar, much needed on campus will be part of the Union, too.



The group which will supervise operations of the new Union is the Union Governing Board. At least three student members, three faculty members, the Union Director, and the Vice President of the Student Senate, will be members of the Board. Faculty members have voluntarily withdrawn voting privileges in Governing Board affairs; this enables the relationship between the Governing Board, the Student Senate and the Student Social Committee to be more easily clarified. Faculty members will, of course, have a voice in the establishment and implementation of Union policy. The Union gives promise of being truly a "Student Union."

Union Governing Board
 Patricia Lind
 Charles Norelius
 Edward Pronchinski
 Craig Sidles
 Dean Rozehnal
 Dean Knaack
Union Director

– Service Services Socializing

Since college comprises the entire life of a student while he is attending, there must be more than classes, social life and extra-curricular activities. For many this extra need is met by interest and participation in one of the several religious organizations.

If a student at River Falls holds the Christian religion or is interested in it, there is an organization for him on campus. Sponsored by local Christian churches, these student religious organizations are designed to meet the needs of college students.

Religious services, prayer, discussion, evening dinners, programs featuring speakers from all fields, trips and socializing are things one will find on the religious organizations' yearly calendars. The famous "cost suppers" of these groups begin the week for many students with a pleasant combination of religion, good food and pleasant atmosphere.

The organizations listed in the following section all have different ideological emphasis. They are alike, however, in that they serve the needs of students.

Canterbury Club



Row One: Helen Fall, Sue Carol Dorgan, Sandra Finn, Sylvia Fleming, advisor; Row Two: Mary Leschisin, Charlene Bitney, Judy Johnson; Row Three: Arnold Kaluzny, Mr. Setterquist, advisor, Rev. C. R. Dahlen, advisor.

River Falls' Canterbury Club is organized to stimulate fellowship among students and faculty of the college who are members of the Episcopal Church. Churches other than the Episcopalian are the concern of the Canterbury Club in this fellowship which its members seek to promote.

Attendance at religious conferences in Menomonie and Chicago have been high points of the Club's activities this year. In addition, Club members have represented their viewpoint in religious discussions on campus, and have participated as an organization in campus activities, Homecoming and Winter Carnival.

OFFICERS

President	Charlene Bitney
Secretary-Treasurer	Helen Fall
Publicity Chairman	Mary Leschisin
Advisors	Ted Setterquist
	Sylvia Fleming

Covenant Club

Composed of members of the Covenant Church, River Falls' Covenant Club sets out to promote fellowship among its youth and others of similar convictions. Opportunity for leadership of Christian youth is provided by the Club as one of its purposes.

Special events in which the Club as a body participated this year included a Valentine Banquet last winter, interdenominational studies of religious problems and a concert by the Covenant Club Choir, at Easter, of the sacred cantata, *No Greater Love*, by John Peterson.

OFFICERS

President Bob Winberg
Vice-President Chuck Norelius
Secretary Martha Wulff
Treasurer Russ Vermillion
Advisor C. B. King



Row One: Treva Solum, Edith O'Mera, Janet Kahabka, Pat Wiff, Maye Almquist, Faye Almquist, Gloria Nilson; **Row Two:** Gretchen Mallory, Marlene Northrup, Carolyn Sheldon, Mildred Gustafson, Janice Braker, Virginia Rogers; **Row Three:** Roger Doty, Chuck Norelius, Orron Thomas, Russell Vermillion, Leslie Bocksell; **Row Four:** Jim Kahl, Vaughn Halling, Bob Winberg, Jack Kilmer, Charles Nybo, Mary O'Mera.

Gamma Delta

Gamma Delta is a group of students who are members of the Lutheran Church, Missouri Synod. Their purpose, to bring Christian fellowship to all Lutheran students, is in part accomplished in weekly meetings at Gamma Delta House on Fourth Street.

Special Matin services were sponsored by the Club this year in addition to its Senior Banquet. The Gamma Delta built a Homecoming float last fall and club members sold College car decals as a fund-raising project.

OFFICERS

President Allen Rosenthal
Vice-President Lloyd Danke
Secretary Charlotte Hentsch
Treasurer Carol Klapel
Program Chairman Bill Hermann
Advisor Gerhardt Bohn



Row One: Carol Klapel, Charlotte Hentsch, Judy Steffenhagen, Lois Steffenhagen, Carol Hentsch; **Row Two:** Roger Poff, Richard Quast, Lyle Lueck, Allen Rosenthal, Dan Teetzen, Lloyd Danke, Ken Kickbusch, Ron Gehler, Louis Pape, Rev. Raymond Geist; **Row Three:** Gerald Mielke, Sherman Stoflet, Roger Piehl, Wayne Sukow, Lowell Baltz, Jerry Suset, Wilbert Herrman.

Lutheran Student Association

Made up of students who belong to the Evangelical Lutheran Church, River Falls' L.S.A. seeks to meet the religious and social needs of its members. Meeting Sunday and Tuesday evenings, services and discussions are parts of the L.S.A. program.

A feature of the group's calendar this year was a series of speakers, from the college, theological seminaries, professions, brought in to discuss religious problems in terms of the secular college student.

The annual L.S.A. Banquet, held in April this year featured Dr. Theodore Hugginvik, theology professor from St. Olaf College. His speech, "New Life," typifies the kind of program the L.S.A. concentrated on this year.

OFFICERS

President	Gordon Waller
Vice-President	Dick Danke
Secretary	Kathy Hartwig
Treasurer	Donald Hall
Publicity Chairman	Shirley Christenson
Executive Council	Dale Wyss
	Patty Ross
	Marge Wallen
Faculty Advisors	Phillip Anderson
	Gerald Bisbey
	Richard Swenson



Row One: Karen Engebret, Marjorie Wallen, Donna Lou Berg, Joyce Kersten, Diana Steen, Carolyn Brown, Janet Butterfield, June Orne, Don Olson; **Row Two:** Beverly Nielson, Ruth Fick, Gayle Wernberg, Esther Skoug, Carol Myhre, C. Beyl, Sandra Paulson, Elaine Christensen, Jane Halverson, Shirley Christenson, Carol Busch; **Row Three:** Douglas DeBoer, Kurt Peterson, Clifford Danielson, Jay Bergstrand, Neil Nordquist, J. Nelson, Gerald Marlette, Cal Romsos, Myron Jackson, Warren Stenberg.



Row One: Jeanie Crownhart, Joan Kuechler, Dorothy Vobornik, Bonnie McManus, Sherryl Brinkman, Corrine Hribar, Mabel Miller; **Row Two:** Joe Frankenberg, John Brey, David Cook, Barb Buck, Barbara Rose, Hal Tritz, Clare Hewitt; **Row Three:** George Berger, William Boetsch, Robert Dietsche, Mathias Felber, Leonard Kaczmarzyk, Sylvester Socha, Norbert Kramer.

Newman Club

River Falls' Newman Club is an organization of students who are members of the Roman Catholic Church. Its purposes are educational, in furthering the Catholic student's knowledge of his religion's teachings, and religious, in providing him with a place near the campus, Newman Center, where he may go for services. The Newman Club attempts to produce better secular leaders among its members through its program here.

In November and December of this year, the Club sponsored an Apologetics Course in Catholic teachings for students and other interested persons. The St. Johns University Chorus was brought to River Falls by the Newman Club, and its own choir and dance band were active this year.

Most notably, the story of River Falls' Newman Club this year was the acquisition of a chapel addition to Newman Center. Several fund-raising drives by the Club made the chapel a reality after long planning. In it, Club services are held.

OFFICERS

President	Jim Dougherty
Vice-President	Tony Koss
Secretary	Bernice Amundson
Treasurer	Dave Teclaw
Chaplain	Rev. Joseph Higgins



Row One: Mick Rogers, Gerald Mertens, Bill Hansen, Edward Pronschinske, Jon Hillstead, Jim Meier, Sam Thompson, John Steber; **Row Two:** Jim Dougherty, Jan Kuechler, Gloria Grover, Criss Jelen, Marcy Campos, Rosie Kapusta, Jean Anne Kotts, Marlene Czerwonka, Lucy Hofacker, Jane Aide, Barbara Brickner, Helen Glesnes; **Row Three:** Monica Feyereisen, Carol Murphy, Mary Suennen, Marion Knipp, Edmund Germain, Marlin Seifert, John Wiskerchen, John Ruemmele, David Teclaw, Lois Kochenderfer, Jean McMillan.

United Student Fellowship



Seated: Jean Holub, Irene Lunde, Karl Schmid, Mary Fuller; **Standing:** Mary Ellen Walters, Shirley Parker, David Moore, Jim Meacham, Jim Segerstrom.

Made up of members of the Evangelical and Reformed, Congregational and Presbyterian churches, River Falls' U.S.F., the United Student Fellowship, treats the relationship between the college student and his church. Meetings are held Sunday evenings and include a cost supper, recreation, program and a worship service.

Events this year organized by the U.S.F. included spring and fall picnics, a fall retreat, a spring planning retreat and a Lenten Ecumenical Study. The U.S.F. won the Winter Carnival Snow Carnival snow sculpture contest and as a group participated in a number of campus activities.

OFFICERS

President	Karl Schmid
Vice-President	Dave Moore
Secretary	Mary Ellen Walters
Treasurer	Jerry Derleth
Worship Chairman	Shirley Parker
Publicity Chairmen	Jim Segerstrom
	Jean Holub
Advisor	Rev. John Merner
Faculty Advisor	Gilbert Smith

YM - YW

River Falls' chapter of the national YM-YWCA organization, the Young Men's — Young Women's Christian Association, carries as its purpose fellowship among its members. Four delegates from River Falls' chapter attended the annual fall Y conference at Camp Idhuhapi in Minnesota.

The College Y sponsored this year's Freshman Mixer, the Queen's Float at Homecoming and in a fund-raising drive sold the famous Wisconsin Historical Society Calendars.

OFFICERS

President	Verland Norton
Vice-President	Gary Rodhe
Secretary	George Lewerenz
Treasurer	Shirley Christenson
Advisors	Wilfred Harris
	Arthur Elfring
	John Mosher
	James Crane



Row One: Dr. Harris, advisor, David Anderson, John Phillips, Verland Norton; **Row Two:** Mr. Mosher, advisor, Kay Holmes, Carol Myhre, Shirley Christenson, Carol Klapel; **Row Three:** Mr. Crane, advisor, Chuck Wendt, Sandy Paulson, George Lewerenz, Gary Rhode.

Wesley Foundation

The Wesley Foundation is made up of students who are members of the Methodist Church. Meeting religious and social needs of Methodist students at River Falls is its purpose. Close cooperation with other religious organizations is a hallmark of the College's Wesley group.

Special Easter activities of Wesley this year included services, Lenten Breakfasts and the final "Meal in the Upper Room." Study of the Bible and Understanding Major Methodist Beliefs are part of Wesley's annual calendar.

Meeting officially every Sunday and Tuesday evening, the organization, in addition to its religious and social functions, attempts discussion of ideological matters.

OFFICERS

President	Griff Howell
Vice-President	Rae Bucholz
Secretary	Wilma Owens
Treasurer	Russell Helwig
Worship Chairman	David Julian
Program Chairman	Carl Zache
Publicity Chairman	Bob Vermillion
W.C.C.	Jane McKinley
Historian	Anne Adams
Faculty Advisors	Charles Graham Marvin Thompson



Row One: Carole Lagerstrom, Fred Hunter, Tom Johnson, Carol Truttschel, Jim Schwenk, Roy Labs, Jane McKinley, Judy Daft, Verland Norton; **Row Two:** Karen Larson, Griff Howell, Wilma Owens, Gene Kirk, Charles Smith, Dennis Lindquist, Bob Johnson, Herman Weinert, Ariyn Baumgarten, Roger Schaller, Howard Doe, Charles Swann, Ron Williams, Anne Adams, Bob Vermillion, Frank Bartz, Harland Carlson, JoAnn Schwenk, George Pederson, Ray Kozub; **Row Three:** Bill Vasey, Neal Prochnow, Herman Boettcher, Rae Buchholz, Judy Harman, Mary Long, Marlene Rudquist, Marilyn Gulickson, Nancy Solum, Sandy Appleby, Karmon Joneson, Bev Monette, Kim Kilyoung, Jim Orr, Kay Holmes, Howie Hofschild, Mrs. Edna Ritchey, advisor; **Row Four:** Bonnie Benson, Lois Farmer, Georgeann Younggren, Cathy Anderson, Barbara Nelson, JoAnn Whitmore, John Doyle; **Row Five:** Val Hansen, Judy Riter, Earl Finder, Harry Beggs, Liz Wintermeyer, Georgia Bosman, Judy Monchilovich, Dale Ducklow, Sandra Stoner, Roger Cook; **Row Six:** Joyce McKinley, Merry Harris, Marion Schmidt, Dawn Bergstrom, James Schlaugh, Sandra Finn, Sylvia Smith, Carol Jennings, Joan Gilbertson, Roberta Farmer, Bruce Stafford, Bill Turner; **Row Seven:** Min Sun Cho, Russ Helwig, Jo Paulson, Lorain Anderson, Dale Holman, Jim Hubin, George Lerverenz, Eddie Fisk, Merlyn Folz, Jon Fisk, George Beestman, Gary Drohman, Frank Fox, Jerome Rodewald, Rog Dotey, Loren Albert, Rev. John McCartney, advisor, Dr. Graham, advisor.

— Professions Participation Plenty of work

Association of Childhood Education



Row One: Mabel Miller, Judy Monchilovich, June Orne, Lorraine Jacobson, Helen Monchilovich, Phyllis Anderson, Marie Forman, Rita Murphy, Sandy Kins; Row Two: Marion Haugen, Shirley Christenson, Mary Dougherty, Pat Peichel, Jan Kuechler; Row Three: Jean McMillan, George Johnson, Rae Buchholz, Marjorie Wallen.

MEMBER: (Afterwards) "You know, I think it was the big rabbit that made the whole show a success."

Officers

President	Helen Monchilovich
Vice-President	Marie Forman
Secretary	Mary Dougherty
Treasurer	Rita Murphy
Publicity Chairman	Marilyn Elliott
Faculty Advisor	Ann Dubbe

Pledged to serve the interests of persons who intend to go into elementary education, River Falls' A.C.E. — Association of Childhood Education — concerns itself with problems in the field. Desirable conditions in the nursery school, elementary grades, programs for children are all discussed by the A.C.E.

Meetings attempt to bring together individuals and other groups interested in the education of children, and seek ways to inform the public of the job of elementary education. Speakers, discussions, panels, exhibits of teaching materials are integral parts of the group's calendar.

Easter Wonderland, organized and sponsored by the A.C.E., this spring featured a program entirely for the children of River Falls. Movies, refreshments, a booth where you could get your picture drawn and a huge white rabbit caught about everyone's imagination. Money raised from the undertaking was used to send a delegate to the A.C.E. convention in St. Louis.

Associated Women Students

MEMBER: (To Another) "One more tea,
one more I tell you, and I'll . . . I'll . . ."

Women students as a group at River Falls are represented by the A.W.S. A governing body, Associated Women Students protects and serves the interests of the College's co-ed's, seeks also to promote friendship among its members.

Entering freshmen women are immediately part of the A.W.S. and a student remains in the organization until she graduates. Responsibility to themselves and to the College are deemed desirable by the organization, to these ends the group works.

Sponsorship of the Valentine Formal, Mother's Day Banquet, Faculty Women-Student Informal Party, all were part of A.W.S.'s program and in addition, it sent two delegates to the National Convention in Tempe, Arizona this year.



OFFICERS

President	Sandy Kins
Vice-President	Phyllis Anderson
Secretary	Alma Bents
Treasurer	Kari Gatten
I.A.W.S. Co-ordinator	Barb Brickner
Advisor	Nancy Knaak



Row One: Alma Bents, Dr. Knaak, advisor, Margaret Helgeson, Rae Buchholz, Sandy Kins, Phyllis Anderson; Row Two: Patty Ross, Judy Monchilovich, Barbara Jean Brickner, Helen Monchilovich, Karen Gatten, Dorothy Braun.

Agrifallian



Row One: Harry Beggs, David Anderson, Roger Poff, Ronald Gehler, Jim Orr, Robert Richardson; Row Two: Jerry Huset, Bill Boetsch, Gary Madson, Larry Peterson, William Jensen, Edmund Germain.

MEMBER: "If you have not got the ed courses, they say you can't get a job in this field . . . Well, that's where they're wrong."

New this year, River Falls' Agrifallian fulfills a purpose unique to the college's function as a liberal arts institution.

Made up of students in agriculture who are not planning to teach the subject in high schools or elsewhere, the group seeks to inform itself of opportunities in the field.

A special feature of the Agrifallian program each month is a speaker usually from outside the College who discusses employment possibilities in agriculture for B. S. degree-holders.



Row One: Bill Dobson, Marlin Feld, Mr. Johnson, advisor, Dick Patin, Fred Gilbertson; Row Two: Dan Gaeu, Allen Rosenthal, Norman Lang, Kenneth Bergen, Bernie Feld; Row Three: Art Lurndal, Ron Zirbel, Bob Winberg, Bob Day.

OFFICERS

President Marlin H. Feld
Vice-President Dick Patin
Secretary Bill Dobson
Treasurer Fred Gilbertson
Advisor Arthur Johnson

Atelier

MAN WITH BRUSH: "This selling stuff can't be part of art . . . must be though . . . business, too . . ."

Atelier is River Falls' organization for students interested in art. Several things are attempted by the group. At monthly meetings new mediums and techniques of painting, sculpture, print-making, understanding of the creator of works of art and his creation—these are discussed.

The organization attempts to bring to the campus new ideas in art, exemplified in the work of its members and in the creations of artists brought here by the club. This year, Atelier sponsored Miss Lisbeth Anderson, designer from Sweden, in connection with the Rural Life Conference, and made a large contribution to the Fine Arts Festival in its sponsorship of painter and print-maker Mary Barrett, and its sale of Japanese prints.



Row One: Bernetta Oebser, Helen Fall, Mary Leschisin, Charlene Bitney;
Row Two: Mr. Crane, advisor, David Julian, Dexter Mayfield, Bill Armbruster, Gary Derksen, Mr. Ammerman, advisor.

OFFICERS

President Gary Derksen
Vice-President Ralph Ryan
Secretary Mary Leschisin
Treasurer Bill Armbruster
Advisors James Crane
William Ammerman

Chemistry Club

MEMBER: (Whispering to Another) "I don't know much about this part of it but he seems convinced enough . . ."

An Affiliate Chapter of the American Chemical Society, the college's Chemistry Club attempts to promote a professional interest in chemistry and inform itself of opportunities in the field. Socially, the organization works toward a familiar atmosphere among its members.

Additionally, the Chemistry Club provides programs of strictly professional interest, with members reading short papers in areas of their personal interest. This presentation of one's work is thought to be important by the Club, the experience to prove valuable when the student's career has begun.

OFFICERS

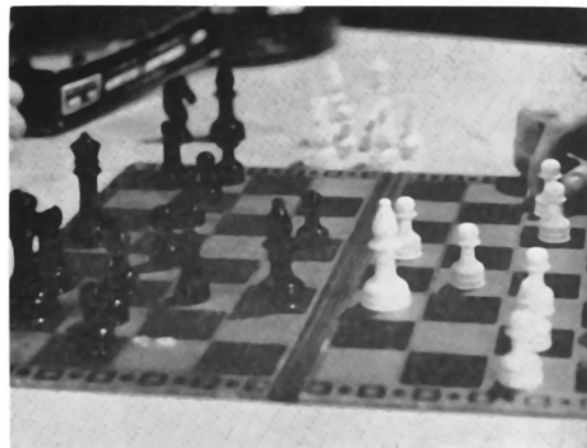
President Carl Duch
Vice-President Leon Thompson
Secretary-Treasurer Jean Beiderman
Program Chairman Jim Burton
Advisor O'Neal Mason



Row One: Bill Johnson, John Wiskerchen, Jon Fisk, Willy Grubbs, Lyle Hofacker; **Row Two:** Marlene Czerwonka, Leroy Lindquist, Russell Helwig, Carl Duch, Jean Beiderman, Robert Nelson, Tom Steele, Mr. Mason, advisor; **Row Three:** Lucy Hofacker, Neil Nordquist, Fred Hunter, Jon Belisle, Jim Burton, Dave Stodola, Edward Gorks.

Chess Club

PLAYER: "That of course means
you're in trouble . . . Sunk . . .
Checkmate!"



"The Sport of Kings" — chess, is the thing in the college's Chess Club. The organization sets out to establish an appreciation of chess among its members and the student body.

Weekly meetings at which chess is played and discussed are features of Club activity. Additionally, it sponsors campus tourneys, publishing results in *The Student Voice*.

River Falls' Chess Club is noted for its activity in this year's inter-collegiate chess tournaments. Last fall, it sent a team of five players to Wartburg College, Waverly, Iowa, where a River Falls record of seven wins against three losses was established.

OFFICERS

President	Alan Krause
Vice-President	Manley Olson
Secretary	Dave Madis
Advisor	Peter Muto



Row One: Dave Madis, Al Krause, Manley Olson; Row Two: John Solie, Russ Lee, Wayne Funk.

Economics Club



Row One: Dr. Smith, advisor, Jim Durning, Ron Skone, Ken Zahorski, Dr. Darr, advisor; **Row Two:** Darrell Peterson, Arnold Kaluzny, Roy Irwin, Shewin Grondlund, Valmer Barrows, Joe Frankenberg; **Row Three:** Dean Loree, Warren Rogers, Lowell Dague, James Bastian, Leland Skog, Leroy Goodenough; **Row Four:** Neil Tollerander, Eldon Liebzelt, Keith Ronningen, Jim Nelson, Sheldon Bearrood.

MEMBER: "Now as I see it, with about twenty-five thousand in utilities, another twenty-five in something that's split every five years, I can . . ."

River Falls' Economics Club is made up of majors and minors in economics. It seeks through its programs to stimulate a broader interest in the field by positive action. The organization brings in practicing economists as speakers for its meetings and films, this year on automation and advertising, to accomplish this.

An outstanding event in the year's history of the Economics Club was its field trip in March to Minneapolis. There members observed this district's Federal Reserve Bank and the Grain Exchange.

Additionally, the Club seeks to inform itself on positions in economics and business, and makes as one of its features the obtaining of information about graduate schools for its members.

OFFICERS

President	Jim Durning
Vice-President	Ron Skone
Recording Secretary	Halsey Halls
Treasurer	Ken Zahorski
Corresponding Secretary	Dave Knott
Advisors	Gilbert Smith Richard Darr

Future Farmers of America

MEMBER: "A Saint Pat's Day dance doesn't seem to me to have much to do with ag, but . . ."

River Falls' chapter of the F.F.A. — Future Farmers of America — holds a number of objectives. The development of leadership in rural life, the field of agriculture, and the F.F.A. itself is its first goal. Participation in cooperative effort toward the improvement of rural life and agriculture, another.

The encouragement of scholarship among its members and training for useful citizenship are things the organization seeks to accomplish.

River Falls' F.F.A. Talent Show is an annual event. The Winter Semi-Formal, St. Patrick's Day Dance and the F.F.A. Banquet were all sponsored and promoted by the group this year.



Row One: Charles Bishop, Glen Ertel, Thomas Pfaff, Fran Cobian, Howard Nelson, George Pederson, Marvin Caspersen, Art Lurndal, Donald Hendrickson, Carl Huebner, Harold Brown, Jim Dunn; **Row Two:** Wilber Larson, Allen Wienke, Lawrence Davenport, Neil Sutherland, George Cipov, Bill Shimel, Robert McGarvey, Dick Danke, Dale Wyss, John Ruemmele, Roger Swanson, David Moore, George Calvert, Erland Ukkola, David Olson; **Row Three:** Phil Lindeman, George Beestman, Don Klemme, Ronald LaGrandier, Gerald Scholze.



Row One: Mr. Delorit, advisor, John Gregorich, Wayne Harmann, Adolf Schmidt, Dick Pudas, Mike O'Connell, Allen Skroch, Gary Dado, Allen Hangartner, Roger Christy, Jerome Bambenek, Neal Jorgenson, Elroy Johnson, Maynard Sexe, Wilbert Herrmann, Alfred Lehman; **Row Two:** Edward Knipp, Truman Everson, Wayne Tomfohrde, Jim Meacham, Frank Fox, Dan Teetzan, Bill Shaw, Dan Porfilio, Dick Coen, Gerald Palesh, Charles Redmond, Donald Webert, Arlen DeMars, Allan Hjelsand, Dale Mahlum, Bill Pickering; **Row Three:** Dale Henning, Lyle Henning, Ronald Christopherson, John Holmes, Erwin Kraemer, John Steber, Carlyle Helstad, Sylvester Socha, Kenneth Shong, Vernon Reinert, Roger Piehl.

OFFICERS

Fall

President Bill Pickering
Vice-President Lyle Henning
Secretary Anthony Koss
Treasurer Tom Pfaff
Sentinel Kenneth Shong
Advisor Truman Everson
Reporter Bob McGarvey

Winter

..... Mike O'Connell
 Allen Wienke
 Richard Pudas
 George Peterson
 Richard Cohn
 Marvin Gasperson
 Howard Nelson

Spring

..... Ivan Greutzmacher
 Jim Johnson
 Dale Wyss
 Sam Perry
 Kenneth Dusso
 Wm. Shimel
 Severt Olson

Le Cercle Francais

MEMBER: (To Stranger) "Parlez vous Francais?" STRANGER: "Nein." MEMBER: "Danke Schon."

River Falls' French Club, Le Cercle Francais, is made up of students in French. Use of the language in a social atmosphere is an end the group holds as one of its goals.

Discussion of French culture is a feature of the organization's meetings. Its sponsorship of films, readings of plays, lectures, and the campus events it promotes are main activities of the organization.

OFFICERS

President Michael Cotter
Vice-President Robert Vermillion
Secretary-Treasurer Dawn Bergstrom
Advisor Jay Gossner



Row One: Jim Laue, Judy Johnson, Carol Jennings, Pat Lind, Gloria Grover, Patty Ross, Mike Cotter; Row Two: Alan Case, Dr. Gossner, advisor, Anne Adams, Judy Gilbertson, Dawn Bergstrom, Diana Steen, Cris Jelen, Janeth Taylor; Row Three: David Julian, Joan Gilbertson.

Die Deutsches Gesellschaft



MEMBER: "Parlez vous Francais?" STRANGER: "Ach Nein!" MEMBER: "Sehr gut! Haben Sie ein Zigarette, bitte?"

Deutsches Gesellschaft, River Falls' German Club, attempts to inform itself about Germany, the language, the culture. Monthly meetings of the organization hear German records, songs, discussions, and are frequently held in members' homes.

Main events in the Club's activities this year included the annual picnic last fall, Christmas caroling and a song fest this spring.

OFFICERS

President Ella Woodbury
Vice-President Jay Bergstrand
Secretary Margaret Helgeson
Advisor Ernst Jurgens

Left to Right: Barb Brickner, Margaret Helgeson, Carolyn Brown, Jay Bergstrand, Ella Woodbury, Shelby Ludwig, Marion Knipp, Gayle Wernberg, Carol Karsmo, Mary Suennen, Janet Butterfield, Ruth Fick.

Kappa Delta Pi

MEMBER: "Kids are kids as
I see it, standards or no standard.
Still . . ."

River Falls' chapter of Kappa Delta Pi is made up of juniors and seniors in education who have high averages. A national honorary fraternity, Kappa Delta seeks to promote a professional attitude toward education.

Eta Lambda, River Falls' chapter initiates its new members in January and holds an annual formal banquet in May, in addition to regular monthly meetings.

Sponsorship of a regional Kappa Delta conference in March by this campus' organization was a high point in this year's activities. Special programs included talks on graduate school and religion in the public schools.

OFFICERS

President Jim Laue
Vice-President Bob Gifford
Secretary Marilyn Elliott
Treasurer Shelby Ludwig
Historian Bill Shimel
Advisor Walker Wyman



Seated: Jim Laue, Phyllis Anderson, Marie Forman, Shelby Ludwig, Janet Kuechler, Dick Enstad; **Standing:** Clarence Dulek, Dr. Wyman, advisor, Marilyn Elliott, Helen Glesnes, Jim Benson, Wayne Tomfohrde.

Math Club

MEMBER: (To Novice)
"The square on the hypotenuse
is equal to the sum of the squares
on the two sides. Got it?"
NOVICE: "Got it."

The Mathematics Club, open to everyone interested in mathematics, seeks to promote a broader understanding of the field among its members.

Main events in Club activities are monthly meetings at which topics in mathematics and related fields are discussed by speakers and members.

An annual Christmas Party, this year held jointly with the Chemistry Club and an annual picnic in May were part of the organization's calendar this year.

OFFICERS

President Wilford Parnell
Vice-President David Skoug
Secretary-Treasurer Nan Bergquist
Advisor Lillian Gough

National Council of Teachers of English



Row One: Carol Naiberg, Kathy Hartwig, Shelby Ludwig, Sue Christenson, Lucy Darr, Anne Adams, Carol Jennings; Row Two: Barbara Brickner, Delores Anderson, Judy Johnson, Pat Lind, Janeth Taylor, Bob Vermillion.

MEMBER: (To Another) "You think there's a possibility of us getting too professional?"

A junior affiliate chapter of the National Council of Teachers of English, the first in the nation in fact, River Falls' NCTE is made up of English majors and minors. Most of its members plan to enter elementary and secondary school teaching of English, but increasingly the organization serves its majors who intend to enter graduate school.

A social and professional organization, the NCTE proposes to foster a professional spirit and interest in Language Arts. Meetings feature discussions of problems in the teaching of English, readings and discussions of poetry, book reviews and the like.

Handling the sale of books by Howard Nemerov this year, in connection with River Falls' annual Fine Arts Festival, the NCTE worked in promotion of this part of the Festival additionally by organizing an autographing session with Nemerov, coffee hours and a luncheon.

Officers

President	Carol Naiberg
Vice-President	Al Phillips
Secretary-Treasurer	Dawn Bergstrom
Program Chairman	Judy Johnson
Advisors	Francis Chisholm
		Walter Engler

Physics Club



Row One: Dora Holst, David Skoug; Row Two: James Poukey, Wayne Sukow.

MEMBER: (To Himself)
*"These papers . . . When'll I give
 one, I wonder."*

River Falls' Physics Club is organized to give its members an opportunity to perform research on some problem in physics. The report to the Club, which accompanies this research, is a main feature of the organization's activities.

Senior physics majors, members of the Physics Club, are given membership in the American Association of Physics Teachers by the group. Work on River Falls' Science Fair is an annual affair with Club members.

OFFICERS

President Wayne Sukow
 Advisors Earl Albert
 Richard Swenson

MEMBER: "Now you steps into the booth here and you puts you hand on the lever there . . . there. And then you pulls and you gets a score. Pull. Now . . . Hm . . . Idiot, it says."

New this year, River Falls' Psychology Club is established to give an opportunity to students to advance psychology as a science and profession. A desirable adjunct to its professional activities, the group sees the promotion of human welfare as a goal of the organization.

Featuring speakers from psychology, counseling and education, Psych Club's monthly meetings saw discussions of main problems in the field.

Members' activities included special project reports and the operation of a booth in the Winter Carnival Midway. The booth, featuring psychological testing devices, made a name for the organization this year.

OFFICERS

President Janeth Taylor
 Vice-President Karen Johnson
 Secretary Marlys Meulemans
 Treasurer Judy Johnson
 Publicity Chairman Nancy Ingwell
 Sponsors Wilfred Harris
 Samuel Saden

Psychology Club



Row One: Ted Verhaagh, Karen Johnson, Janeth Taylor, Nancy Ingwell, Judy Johnson;
 Two: Richard Smith, Clinton Holst, Jerry Mertens.



Row One: Jim Turnquist, Phil Lindeman, Emery Crowley, Griff Howell, Duane Teska, Mick Lauber, Peter Hubin, Dan Teetzen, James Meacham; **Row Two:** John Gregorich, Allen Winke, Fred Schmit, Mick Collins, Dick Shimel, John Rassbach, Fred Colman, Jack Omar, Darrell Hart; **Row Three:** John Lynch, Larry Hanson, Tom Shield, Manley Olson, Roger Piehl, Marvin Hanson.

"R" Club

MEMBER: (At the Half) "So you hit him about shoulder-height and I'll take him below . . . 230 pounds is 230 pounds I say."

The "R" Club, made up of students holding River Falls "R's," aims to perpetuate a spirit of good will and cooperation among faculty, student body and campus organizations.

Outstanding as athletes and students, River Falls' "R" Club members set out to build healthy and strong minds. Work in college athletics, the Club says, helps accomplish this.

Annually, the organization presents the Philip Belfiori Scholarship to a deserving student, and at Honors Day awards the Belfiori Trophy to an outstanding football player here.

OFFICERS

President Duane Teska
Vice-President Jim Hallen
Secretary-Treasurer Al Suezaki

Rural Life Club

MEMBER: "I never thought I'd have to learn how to shovel coal in order to teach school."

Made up of students planning to enter rural teaching, the Rural Life Club sets out to establish social relations on campus between these individuals.

Features of the organization's programs are educational experiences and the presentation of information in the field to members. A professional attitude is seen as desirable by the group.

A New Year's Party brought the group together early this year. May saw the Rural Life Club's annual picnic and the Sophomore Get-Together for two-year rural graduating sophomores.

OFFICERS

President Joyce Draeger
Vice-President Judy Bille
Secretary Judy Coen
Treasurer Donna Petterson
Advisor Glen Tinkham



Row One: Dorothy Hunter, Bonnie Benson, Joyce Draeger; **Row Two:** Jean Holub, Glenda Rundhammer, Donna Petterson; **Row Three:** Sandra Stoner, Mr. Tinkham, advisor, Sue Gaynor.

Sigma Chi Sigma



Row One: Jan Kuechler, Alma Bents, Karen Gatten, Delores Anderson, Gwen Schlaugh, Judy Johnson; **Row Two:** Helen Monchilovich, Marjorie Wallen, Marilyn Elliott, Shelby Ludwig, Marie Forman, Judi Axtell, Margaret Helgeson, Nancy Ingwell, Mary Finley; **Row Three:** Phyllis Anderson, Jane Aide, Carol Korsmo, Barbara Brickner, Shirley Christenson, Kathy Hartwig, Pat Lind, Muriel Peterson, Anne Adams, Janeth Taylor, Sandy Kins, Patty Ross, Marlys Matzek.

MEMBER: "I don't know who the sweetheart of Sigma Chi is but we could sure use one . . ."

Made up of members who have been invited to join, River Falls' Sigma Chi organization has a three-fold purpose. Service to the community and its members, the maintenance of cultural activities and sociability, all are ends of the group.

Members of Sigma must possess a high grade-point average and have desirable personality and character traits in order to gain entrance to the organization.

Each year, Sigma serves the College by presenting a scholarship to an outstanding freshman girl. Undertaking the Easter Seal Drive on Campus is an annual event on Sigma's calendar also.

Sigma members attend ballet presentations and concerts and bring to the campus speakers, for their own meetings and for the College. A spring Smorgasbord and a year's-end dinner party climaxed this season's Sigma Chi Sigma activities.

OFFICERS

President	Phyllis Anderson
Vice-President	Mary Finley
Secretary	Shelby Ludwig
Treasurer	Margaret Helgeson
Advisors	Vera Moss
	Dorothy Kleinpell
	Peggy Wells

Sitzmarkers



Row One: Gwen Schlough, Rae Buchholz, Margaret Helgeson; **Row Two:** Miss Fleming, advisor, Tom Barry, Harry Beggs, Dan Clemmons, Ronald Taylor, Leonard Dravis, Phyllis Fiedler, Dorothy Braun; **Row Three:** Ed Foss, Jay Bergstrand, Jim Gropp, David Moore, John Neuenfeldt, Dave Wolfert, Stan Carlson, Paul Coons; **Row Four:** Dick Healy, Carol Korsmo, Bruce Foster.

*MEMBER: (With Broken Leg)
 "Now I sees this tree coming at
 me as I makes this turn and I turns
 too, and . . ."*

"Place in the Snow," the meaning of "Sitzmarker," implies spills are taken by these, River Falls' skiers. Seeking to promote skiing on campus, the organization makes the most of the little snow which falls around here, makes much of the snow at nearby ski areas.

Main feature of Sitzmarker activities is the arrangement of trips to ski resorts in northern Wisconsin and Minnesota. During this year's Winter Carnival, the organization took over "Ski Mac," a ski resort, set up races for students and worked the ski patrol.

OFFICERS

President	Thomas Barry
Vice-President	Delward Jenson
Secretary-Treasurer	Carol Korsmo
Advisors	Sylvia Fleming Richard Darr



Row One: Lois Farmer, Sandra Finn, Joyce McKinley, Lorraine Jacobson, Mary Lischisin, Georgia Bosman, Joyce Draeger; **Row Two:** Wilma Owens, Donna Lou Berg, Joyce Kersten, Helen Fall, Rae Buchholz, Liz Wintermeyer, Millie Vienendall; **Row Three:** Marlene Morse, Dawn Bergstrom, Jane McKinley, LaVerna Brown, Wayne Anderson, Neil Nordquist, Willy Grubbs, Phillip Thurston, Russell Helwig.

Student National Education Association

MEMBER: "And a lot can be done by you personally if you belong, you know . . . A profession is a profession."

SNEA, Student National Education Association, seeks to further and develop the interests of its members in the teaching profession. Attempting to acquaint itself with the history, ethics and programs of the organized teaching profession, SNEA works closely with state and national educators' organizations.

Monthly meetings feature programs designed to accomplish these ends. The SNEA views active professional membership in teachers' organizations as most important. To enrich the personal experiences of its members is a goal of River Falls' SNEA, to better prepare them for the teaching profession.

OFFICERS

President	Jane McKinley
Vice-President	Marilyn Elliott
Secretary	Helen Fall
Treasurer	Rae Bucholz
Publicity	Wilma Owens
Co-Sponsors	Samuel Saden
	Naunda Tietz



Row One: Dan Gaeu, Tony Koss, Norbert Kramer, David Becker, Howard Nelson; **Row Two:** Charles Redmond, Leonard Kaczmarzyk, David Schmid, George Pederson, Larry Peterson, Ivan Gruetzmacher.

Utilizing a Sergeant - at - Arms (even) River Falls' Toastmasters Club sets out to improve the speaking ability of its members. It attempts to do this by providing detailed guidance and friendly and helpful assistance at its regular meetings.

The organization, a branch of the Eau Claire Toastmasters Club of Toastmasters International, makes its main feature a speaking contest. Beginning in February and running through the final meeting (the Spring Banquet), the tournament produces a winning speaker chosen by popular vote.

SPEAKER: (Finger Up-raised) "And furthermore, direct economic aid to foreign countries is something we can not afford. We ought to give direct economic aid to our own country. How about that?"



Row One: Dick Shimel, Dick Danke, Wayne Harmann, John Gregorich; **Row Two:** Fran Cobian, Dr. Kettelkamp, advisor, Walter Skroch, Don Klemme, Vernon Reinert, Harold Brown.



Row One: Mathias Felber, Edward Pronschinske, Truman Everson, David Olson; **Row Two:** Severt Olson, Lyle Henning, Gordon Waller, Bruce Harris, Olin Fimreite, Bob Aebly, Sam Perry.

President Tony Koss
Vice-President Gary Solum
Secretary James S. Johnson
Treasurer Ivan Gruetzmacher
Sgt. at Arms Dick Danke
Advisor B. H. Kettelkamp

..... Lyle Henning
 George Cipov
 Gordon Waller
 Howard Nelson
 Gary Solum
 B. H. Kettelkamp

..... Bill Shimel
 Larry Peterson
 Dave Becker
 George Cipov
 Dale Wyss
 B. H. Kettelkamp



Row One: Robert Aggranoff, John Lynch, Warren MacKnight, Bernie Feld, Philip Knuf, Larry Hanson, Mike O'Connell, John Gregorich; **Row Two:** George Banta, Ken Goldsmith, Larry Julien, John Doyle, Ron Zirbel, Truman Everson, Dick Pudas, Leon Miller, Conrad Wolodko, Dean Loree.

VET: (To Another) "It wasn't very long ago . . . I still remember a lot about it . . . Seems quite a while back though, now that you do think about it."

Vets Club

Working closely with the local American Legion, River Falls' Veterans' Club seeks to bring ex-G.I.'s on campus together for social and professional purposes. Information pertaining to veteran's affairs is gathered by the organization and distributed to its members and discussed at monthly meetings.

A most important item on the Vets' Club calendar is the Children's Day which it sponsors every year. Bringing in underprivileged children for a day at the college where the group plays host, a parade, games, prizes are given.



Row One: Robert McGarvey, Neal Jorgenson, LuVerne Anderson, Allan Hjelmsand, James Schlough, Allen Hangartner, Gordon Nelson, Marlin Feld, Marvin Casperson; **Row Two:** Ron Isaacson, John Eisele, Neil Tollander, John Steber, George Sekaney, Floyd Lindquist, George Lamke, Don Negard, Warren Rogers, Lowell Mathison, Richard Faulkner; **Row Three:** Roy Labs, John Johnston, David Jacobson, Dexter Mayfield, Richard Patin, Rolfe Rodlyn, Mike McEvoy, Bernard Berger.

OFFICERS

President Dean Loree
Vice-President Ted Ver Haag
Secretary Truman Everson
Treasurer Robert McGarvey
Advisor Gerhard Bohn

Women's Recreation Association

MEMBER: "You know, when it comes to playing basketball, the faculty just hasn't got it!"



Seeking to promote a permanent personal interest in recreational activities among its members, River Falls' W.R.A. — the Women's Recreational Association — does a number of things on campus to accomplish this end.

Archery, bowling, basketball, volleyball and swimming are all activities which this campus' W.R.A. sponsors throughout the year. The group recognizes participation in women's athletics as an important part of its members' college careers.

In addition to its recreational activities, the W.R.A. sold corsages at Homecoming, Foundation Week fund-raising buttons, and school stationery throughout the year.

The famous W.R.A. — Faculty Men Basketball Game, High School Playday and a formal candlelight initiation for new members rounds out the organization's yearly calendar.

OFFICERS

President	Gwen Schlough
Vice-President	Ginny Rogers
Secretary-Treasurer	Edie O'Meara
Business Manager	Dodie Brown
Publicity Manager	Jitter Anderson
Advisors	Adeline Levin Emogene Nelson



Row One: Jean McMillan, Pat Kane, Pat Peichal, Gwen Schlough, Shirley Parker, Helen Monchilovich, Marie Forman; **Row Two:** Carol Klapel, Dorothy Vobornik, Mary Phillips, Judy Monchilovich, Mary Suennen, Rae Buchholz, Delores Anderson, Georgia Bosman.

Young Democrats

MEMBER: (Provoked) "Politics! Why don't people just wise up and vote straight Democratic."

Attempting in the first place to acquaint students with the whys and wherefores of American politics, River Falls' Young Democrats seeks also to perpetuate the ideals of the Democratic Party. Attempting to meet the need for more young people in politics, the Young Dems actively recruit members from among the student body.

Playing an important part in the college's annual Grassroots Political Conference, sending delegates to the Young Dems State Convention in Fond du Lac, campaigning for Democrats in the last election, all were activities in the group's calendar this year.

OFFICERS

President	Manley Olson
Vice-President	Carl Duch
Secretary	Leon Thompson
Treasurer	Norb Teclaw
Publicity Chairman	John Ruemmele
Advisors	Richard Darr Clarence Storla



Row One: Don Rohl, Dan Porfilio, James Meacham; **Row Two:** Lucy Hofacker, Carol Jennings, Lyle Hofacker, Lawrence Gansluckner, Gerald Scholze, Sherwin Gronlund, Dr. Darr, advisor, Dr. Storla, advisor, Mike Cotter; **Row Three:** Anita Munson, Jay Bergstrand, Carvel Hase, Ronald LaGrandier, Gene McNamara, Sam Thompson, David Teclaw, Manley Olson, John Ruemmele, George Beestman, Carl Duch, Gayle Moen.

Young Republicans



Row One: Clifford Danielson, Ted VerHaagh, Yousif Al-Jabouri, John Solie, Fred Gilbertson, Bob Enstad, Jack Woodbury, Ella Mae Woodbury, Ed Schlumpf; **Row Two:** Elroy Johnson, Gary Fischer, Allen Webb, Abbass Saadi, Dale Johnson, George Banta, Alan Krause, Larry Peterson, Gary Madson, Jim Sorenson.

MEMBER: "And I say, why don't people wise up and vote straight Republican."

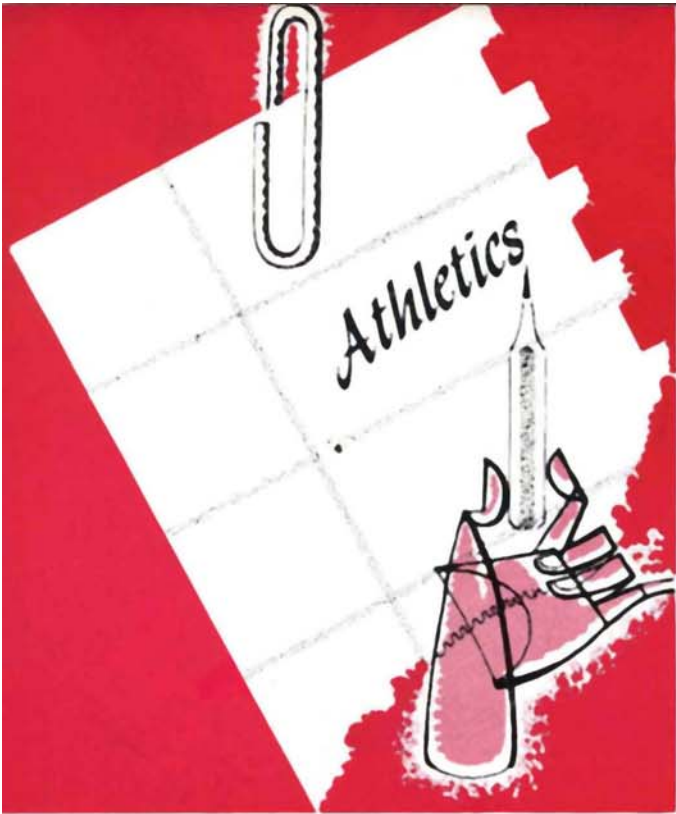
Attempting first to promote and stimulate the growth of political thought from a non-partisan standpoint, River Falls' Young Republicans provides its members with an opportunity to actively participate in state and national election campaign activities.

The Young Republicans feature at their meetings speakers on political matters, state and national and play an active role, consistent with their aims, in election campaigns.

River Falls' group was instrumental in the formation of a Young Republican group at Northland College, Ashland, Wisconsin this year and played an important part in the Grassroots Political Conference here last fall.

OFFICERS

President	Jack Woodbury
Vice-President	Gary Madsen
Secretary	Margaret Helgeson
Treasurer	Ted Ver Haagh
Publicity Chairman	Fred Gilbertson
Advisor	James McLaughlin







Fran Polsfoot



Owen Bergsrud



Don Page

Wisconsin State

This was the season everyone had been waiting for.

Head Coach Fran Polsfoot had lost only two regulars from a 1957 Falcon grid team which lost only one conference game. Twenty lettermen were returning, among them end Jack Neurer and fullback Jack Omer, all-conference selections. The most promising crop of freshmen in years was on hand at the opening practice.

And, it was well worth waiting for in the eyes of River Falls football fans. The Falcons nailed down their first Wisconsin State College conference gridiron championship since 1947, and did it with an unblemished 6-0 league record. They also marked themselves as the team to beat for the next season, for there were only four seniors on the 1958 championship squad.

It was a combination of determined line play, inspired coaching and split-second backfield timing that brought the title to River Falls. The Falcon line consistently gave away five to ten pounds per man, yet took charge in every game. Vicious blocking and tackling was led by Neurer, tackle Jim Carew and guard Dick Shimel, all of whom were later selected for the all-conference team. Carew, who started his college career as a guard, led the Falcons in number of tackles in half of their games. Other linemen who contributed a large share to the team's success were ends Tom Shield and Bob Brunette, tackles Ed Olund, Howie Madsen and Larry Julien, guards Al Wienke, Phil Lindemann and Tom Sackett, and centers Gordie Hoff, Roger Piehl and Dave LeClaire.

Coach Polsfoot, assisted by Ben Bergsrud and Don Page, meshed the forward wall with a backfield that showed surprising speed, drive and deception. The year's outstanding performance came from 180-pound sophomore halfback Mick Lauber, who developed into one of the conference's finest kick-returners and broken-field runners. Lauber finished second in league scoring, picking up most of his points on long scoring runs. But Mick was just one of a dependable array of halfbacks from which the coaching staff could draw. Speedster Frank Sprenger, a 10-second man in the 100, gave the fans many edge-of-the-bleacher thrills with his scoring dashes. Hard-running Jack Delahunt, paired with gridiron veteran Curly Hanson, gave the Falcons reserve halfbacks with equal running and scoring potential. Freshmen Mick Rogers, Howie Hofschild and Duane Jenson also saw their share of action.

Champions of the Wisconsin State College Conference for the 1958 football season are, **Row One:** Duane Jenson, Fred Coleman, Bob Dawson, Mick Lauber, Jack Omer, Karl Schmid, Curly Hanson, John Rassbach, Tom Everson, Hank Smith, Jack Delahunt; **Row Two:** Dick Shimel, Pete Hubin, Bob Brunette, Frank Sprenger, Phil Lindemann, Tom Shield, Gordon Hoff, Al Wienke, Jim Hallen, Howie Madsen, Ed Olund, Jack Neurer, Lloyd Gilbert; **Row Three:** Tom Hinke, Glynn Anderson, Chuck Bolder, Roger Piehl, Brad Manor, Chuck Swann, Ernie Blaisdell, Duane Tollefson, Martin Stelter, Dale Holman, Fred Schmidt, Mick Rogers, Tom Sackett, Jon Hillstead, Dale Pittman; **Row Four:** Jim Mausolf, Herman Boetcher, Wayne Johnson, Leon Thompson, Larry Julien, Howie Hofschild, Jim Killian, Dave LeClaire, Jim Carew, John Lynch, Jim Brill, Ron Williams, Jim Hubin, Dave Swan, Head Coach Fran Polsfoot.



College Champs - 1958

Grandstand quarterbacks hastened to agree that a big reason for the team's success was the presence of three of the league's top quarterbacks — Jim Hallen, Tom Everson and Bob Dawson. Hallen's dependable field-generalship, coupled with the extraordinary running and passing ability of Everson and Dawson, proved to be an unbeatable combination for every conference opponent. Veteran fullbacks Omer and Pete Hubin carried the brunt of the pile-driving chores.

River Falls' easy 31-6 victory over Augsburg in the non-conference opener on that humid night in early September was an omen of things to come. Spirits were dampened by a 12-2 loss to Stevens Point in a non-league tussle the next week, but a 14-0 victory over Whitewater in the conference kick-off tilt put the Falcons on their way. Jarring line play led by Wienke, Carew and Piehl paved the way to a 25-0 victory over a highly-rated Superior team which could muster only 97 total yards to 411 for the Falcons. After the Falcons easily handled Stout for number three, the school packed up for the biennial trek to Eau Claire and were not disappointed. Trailing 6-0 at halftime, the Falcons cashed in on every second-half scoring opportunity to win going away, 27-6. The La Crosse game was easier than expected (21-6), but it was a needed tune-up for the championship battle with Platteville, the team which had dampened Stevens Point's title hopes via a 14-14 early season tie. A Homecoming crowd of 4,000 watched runs of 45, 62 and 71 yards by Lauber and unbeatable defensive play led by Neurer as the red and white held off a second-half rally to win the title, 28-26. A 20-14 loss to Mankato, Minnesota College conference champs, ended the season a week later.

All in all, it was one of those rare sports seasons with all of the elements — a winning team, dazzling plays, close games, good sportsmanship — which make football an integral part of college life.

FINAL STANDINGS — 1958
WISCONSIN STATE COLLEGE CONFERENCE

	W	L	T	Pts.	Opp.
River Falls	6	0	0	147	51
Stevens Point	5	0	1	142	82
Oshkosh	4	2	0	129	78
Whitewater	4	2	0	156	82
Eau Claire	3	3	0	70	167
La Crosse	3	3	0	113	89
Platteville	1	4	1	68	83
Superior	1	5	0	74	80
Milwaukee	1	5	0	76	137
Stout	1	5	0	47	175

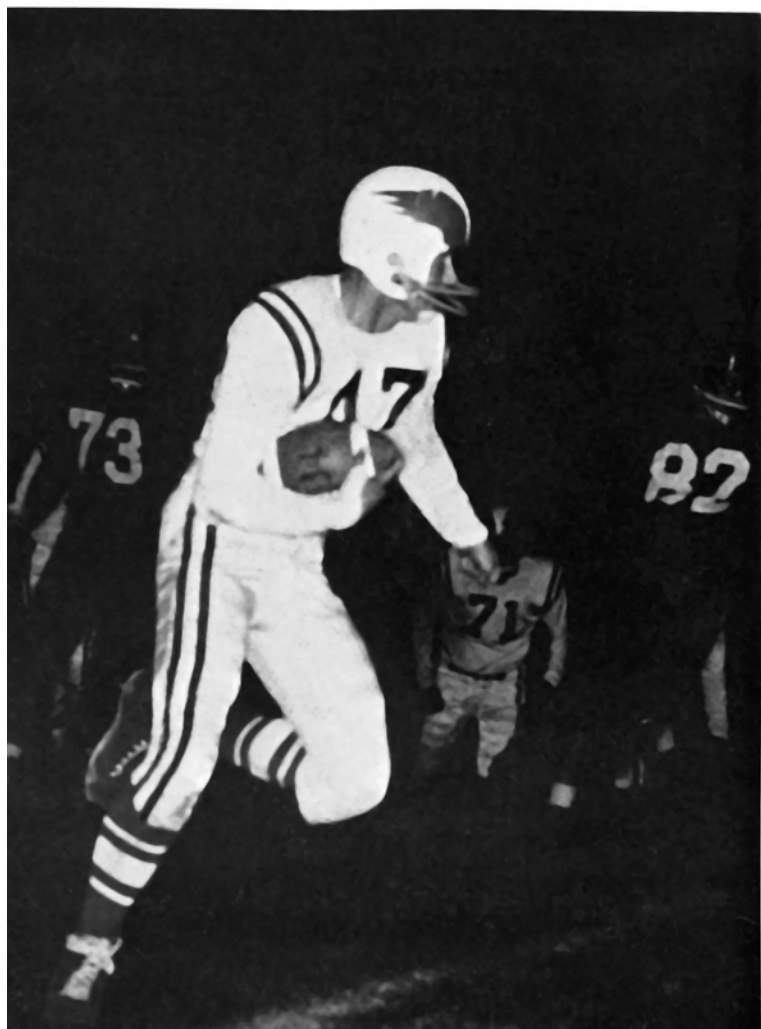


SEASON'S RECORD

River Falls 31, Augsburg 6
 River Falls 2, Stevens Point 12
 *River Falls 14, Whitewater 0
 *River Falls 25, Superior 0
 *River Falls 32, Stout 13
 *River Falls 27, Eau Claire 6
 *River Falls 21, La Crosse 6
 *River Falls 28, Platteville 26
 River Falls 14, Mankato 20
 *Conference Games
 Season's Record: Won - 7, Lost - 2
 Total Points: RF - 194, Opp. - 89
 Ave. Per Game: RF - 21.6, Opp. - 9.9



Polsfoot gets a ride after Eau Claire falls



Sprenger, alone and running



All Conference

For the fourth consecutive year, the Falcons placed four men on the all-conference football team to lead the league in number of players selected for the honor squad. The 1958 WSC football champs landed three junior linemen and a sophomore halfback on the all-star aggregation.

The selection of three Falcon linemen — end Jack Neurer, tackle Jim Carew and guard Dick Shimel — to the honor team, was a fitting tribute to the fine line play which led River Falls to the title. For Neurer, a 175-pound fireball from Cumberland, it was the second year as an all-league selection. He has led the team in pass receiving for two years and is also its top defensive end. Carew led the Falcons in tackles in five of the nine games, while Shimel is rated as the finest Falcon guard in many years.

Fourth Falcon to land on the honor squad was Mick Lauber, a 180-pound sophomore from Glenwood City. Lauber placed second in conference scoring with 56 points and pleased the fans with his electrifying open field running. He scored on touchdown runs of 34, 47 and 71 yards from scrimmage, pass receptions of 29, 33 and 45 yards and turned in kick returns of 52 and 62 yards.



Jack Neurer



Jim Carew



Dick Shimel



Mick Lauber



INDIVIDUAL SCORING

	TD	PAT	PTS
Mick Lauber, hb	10	3	63
Frank Sprenger, hb	5	0	30
Jim Hallen, qb	1	9	15
Tom Everson, qb	2	0	12
Pete Hubin, fb	2	0	12
Jack Neurer, c	1	6	12
Jack Omer, fb	2	0	12
Bob Brunette, c	1	2	8
Tom Shield, e	1	2	8
Bob Dawson, qb	1	0	6
Jack Delahunt, hb	1	0	6
Howard Hofschild, hb	1	0	6
Curly Hanson, hb	0	2	2
Jim Carew, t		(Safety)	2
TOTALS	28	24	194

Shield saves a long gainer



Neurer
cradles
game-
winning
extra
point
in
Platteville
title
tilt



Basketball

The 1958-59 Falcon basketball team, in the second season under Coach Don Page, finished seventh in the Wisconsin State College conference race with a 4-8 record. River Falls compiled a 7-14 mark for the entire season.

It was a season of ups and downs for the Pagemen, who were able to win two consecutive games only once. There were sparks of promise—like the 77-55 revenge defeat of Mankato, the 83-77 victory over La Crosse and the 82-78 thriller over Superior. These moments were tempered by inability to function smoothly, though, as the mid-January slump in which the Falcons equaled the weather with a two-week cold streak, and lost four straight games.

Bright spot of the year for the Falcons was the performance of Manley Olson. The 6-8 center started slowly, but came into his own with 20 points against Platteville early in January, and hit in double figures in every succeeding game. Olson hit his peak in the La Crosse game, when he poured in 37 points to pace the Falcons to one of their four conference victories. Olson, who was seventh in conference scoring, averaged 14.6 points per game for the season, second only to freshman guard John Lauber. Lauber scored at a 14.8 clip, also hitting 37 points in his top single game performance.

A highlight of the season for both the team and Falcon fans was the second annual alumni scrimmage, for the benefit of the Phil Belfiori scholarship fund. A star-studded alumni team, with such former all-conference choices as Nate DeLong, Newman Benson, Rog Kuss, Dave Herum and Don Fick, handed the varsity an 85-83 loss. DeLong, despite frequent trips to the bench for breathing spells, hit from every angle to roll up 26 points. Benson, who amazed the crowd with his passing wizardry, hit 22 points and set up many more alumni scores.

The close of the 1958-59 cage campaign marked the end of an era in River Falls State College athletics. The Superior game on February 21 marked the last intercollegiate basketball to be played in old North Hall gym, which was the latest thing in basketball palaces in 1914. During the 1959-60 season, the Falcons will play their pre-holiday games in the parochial school gym, expecting to move into their new, 2,500-seat fieldhouse shortly after January 1.

There were only three seniors on the 1958-59 Falcon cage squad—center Tom Shield and forwards Griff Howell and Rock Hanson. Coach Page will have a sound nucleus for next year, built around Olson, John Lauber, Mick Lauber, Mike Collins, Bob Brunette, Jack Omer, Darrell Hart and Mike Rice.



Seated, left to right: Tom Shield, Griff Howell, Manley Olson, Mike Collins, Darrell Hart, Coach Don Page. **Standing:** Mike Rice, Jack Omer, Bob Brunette, Gene Kirk, John Lauber. Absent when picture was taken: Rock Hanson, Tom Everson.

1958-1959

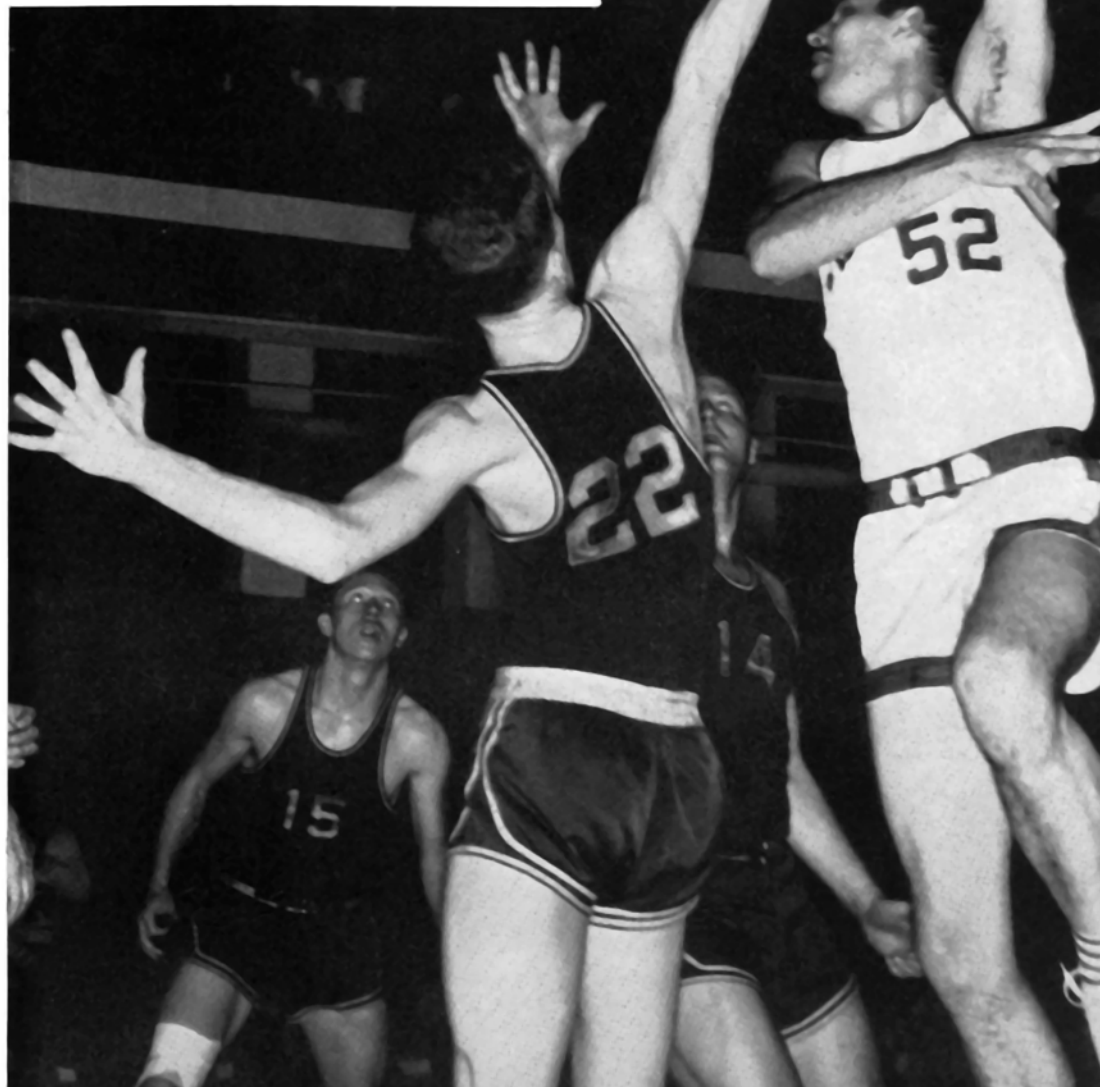
ya' tryin' to touch the ceiling?

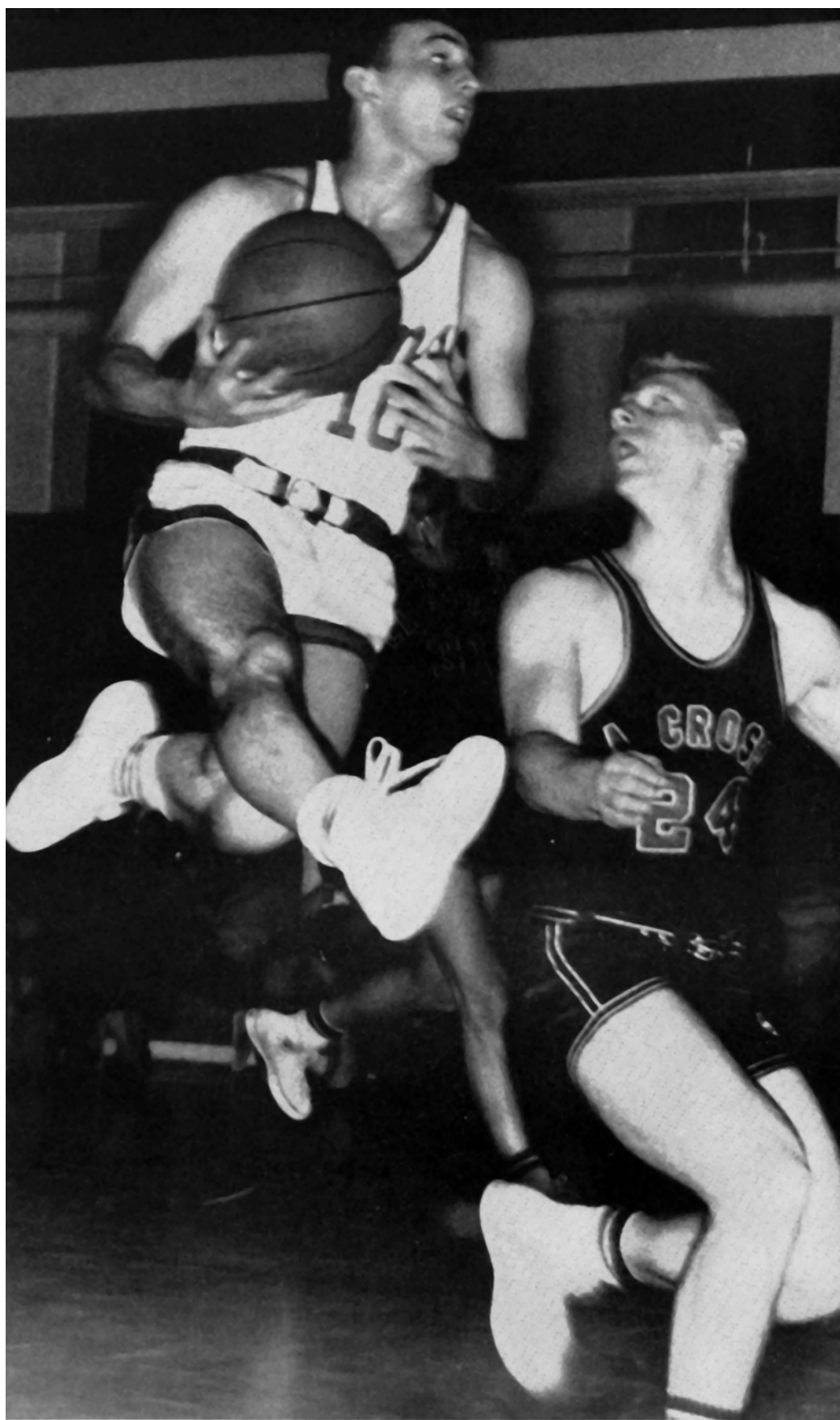
INDIVIDUAL SCORING AND REBOUNDING TOTALS

Name and Position	G	FGA	FGM	Pct.	FTA	FTM	Pct.	Pts	Ave.	Rbd.
John Lauber, g	20	296	102	.345	129	91	.705	295	14.8	53
Manley Olson, c	21	269	114	.424	128	79	.617	307	14.6	298
Mike Collins, f	20	166	66	.398	59	42	.712	174	8.7	93
Mick Lauber, f	16	197	53	.269	51	27	.529	133	8.3	96
Griff Howell, f	20	148	52	.351	53	38	.717	142	7.1	89
Bob Brunette, g	21	112	47	.420	53	31	.585	125	6.0	56
Jack Omer, g	20	135	45	.333	35	21	.600	111	5.6	64
Rock Hanson, f	16	101	32	.317	20	11	.550	75	4.7	41
Gene Kirk, g	2	3	1	.333	6	4	.667	6	3.0	3
Tom Shield, c	19	39	13	.333	27	17	.585	43	2.4	33
Darrell Hart, f	18	46	13	.283	22	15	.682	41	2.3	59
Larry Chelberg, f	1	3	0	.000	3	2	.667	2	2.0	0
Mike Rice, g	16	25	8	.320	12	8	.667	24	1.5	21
Em Crowley, f	3	5	1	.200	1	0	.000	2	0.7	2
Tom Everson, g	3	7	1	.143	2	0	.000	2	0.7	4
Bob Kochenderfer, g	1	1	0	.000	0	0	.000	0	0.0	0
Duane Jensen, f	2	0	0	.000	0	0	.000	0	0.0	0
Totals	21	1553	548	.353	603	387	.642	1483	70.6	912

SEASON'S SCORES

RF 41, St. Thomas 59
 RF 75, Bethel 73
 RF 62, Mankato 63
 RF 70, Stout 75*
 RF 90, Eau Claire 96*
 RF 60, Carleton 54
 RF 77, Mankato 55
 RF 60, Superior 73*
 RF 71, Oshkosh 90*
 RF 61, Plateville 96*
 RF 74, St. Cloud 79
 RF 83, La Crosse 77*
 RF 58, Bethel 76
 RF 76, Stout 66*
 RF 83, Eau Claire 93*
 RF 73, Augsburg 85
 RF 86, Whitewater 78*
 RF 83, Milwaukee 89*
 RF 82, Superior 78*
 RF 50, St. Cloud 85
 RF 68, La Crosse 81*
 RF Total Points — 1,483
 Ave. Per Game — 70.6
 Opp. Total Points — 1,621
 Ave. Per Game — 77.2
 Won - 7, Lost - 14
 Conference: Won - 4, Lost - 8





one of Jake's famous flights

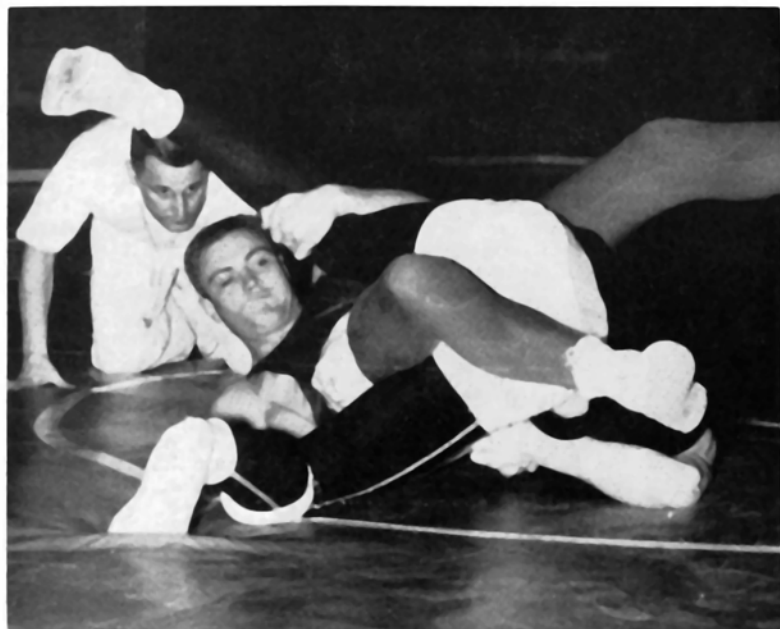
WISCONSIN STATE COLLEGE BASKETBALL STANDINGS

	Won	Lost
Platteville	11	1
UW - Milwaukee	10	2
Eau Claire	8	4
La Crosse	8	4
Superior	6	6
Stevens Point	5	7
River Falls	4	8
Stout	3	9
Oshkosh	3	9
Whitewater	2	10



two for Griff

Wrestling



Under Coach Ben Bergsrud, wrestling came into the foreground as an intercollegiate sport at River Falls this season. The Falcon grapplers took part in 10 dual meets, scoring victories in two of them — 16-14 over Stout and 17-13 over Superior. Bergsrud's squad also took part in the Wisconsin State College Conference meet.

Larry Julien, 198-pound freshman from Fairchild, turned in an amazing record in his first year as a collegiate wrestler. The tackle-turned-heavyweight won eight of 10 matches during the regulation season, most of them by pins. At the state collegiate wrestling meet he won two more matches before losing to the University of Wisconsin's heavyweight in the championship match. He scored three straight victories in the WSC meet to take the heavyweight title, and later added three more triumphs to become the Wisconsin AAU champion. His final competitive mark for the season was 16 victories and three losses.



Left to right: Jerome Braun, Dave Crockett, Ed Schlumpf, Dale Diedrich, Lloyd Danke, Pat Mrotek, Ron LeGrander, Chuck Swann, Bob Brett, Arvid Flannum, Jim Drummy, Tom Overman, Chuck Wedyt, Larry Julien.

Baseball: Doubleheaders . . .



. . . the top Falcon moundmen

With 16 games of a 20-game schedule completed by the middle of May, Coach Don Page's baseball team had split even with eight foes. In compiling an 8-8 record, the Falcon diamondmen swept a doubleheader from Macalester, split a pair of games each with Bemidji, Winona, Stout, Bethel, Eau Claire and Superior, and lost a twin bill to defending champion La Crosse. Many of the games were hampered by wind, dust or rain as pitchers and batters both battled the elements of an inclement spring.

In number of runs scored, the Falcons had split almost even with their opponents. River Falls had tallied 86 times for a per-game average of 5.38, while the opponents had crossed the plate one more time for a 5.46 average. Continuing the statistical balance, Falcon batsmen had come to the plate 437 times, while opposing hitters had counted 436 official times at bat. This was where the analogy ended, however, for the Falcons had rapped out 112 hits for a .256 team batting average, compared to 87 hits and a .200 team mark for the opponents.

Golf

May 13—With 10 victories against seven defeats, in addition to a third-place finish in a 13-team invitational meet, Coach Ben Bergsrud's golf team has already turned in a busy spring. One more meet and the Wisconsin State College conference tournament remain on the linksters' spring agenda.

The 10-7 won and lost record was compiled in nine meets, several of them including three instead of two teams. Bergsrud's crew finished only 10 strokes off the pace in the St. Cloud Invitational tourney.

Two of the most spectacular victories came against a pair of Twin Cities colleges—Bethel and Augsburg. Early in April, the Falcons flashed to a 15-0 triumph over Bethel, then followed it two weeks later with a 16½-1½ victory over the Auggies.

Jim Hallen sports the best average to date—77.4. Ralph Ryan, who had the best individual round with a 69 on the local course, is second man with 77.7. Val Barrows' average is 80.5, Jerry Stern and Jack Baldwin 82.9, and Jerry Derleth 85.1. Hallen has carded 19 birdies—more than any other man on the team. Ryan has taken medalist honors four times, and Hallen twice. Best nine-hole round of the spring was turned in by Barrows at Winona, but perhaps the top thrill went to Stern, who rammed home an eagle on a par five, 540-yard hole at Winona.

GOLF TEAM members, kneeling in front, are Jack Baldwin, Val Barrows and Jerry Stern. Standing: Jim Hallen, Coach Ben Bergsrud, Ralph Ryan. Not pictured: Jerry Derleth, Dave LeClaire.



and Dust!'

Leading River Falls hitter was Mick Lauber, with 10 hits in 25 trips to the plate for a .400 mark. Outfielders Frank Gombold and Bill Halverson rounded out the trio of top batsmen with averages of .366 and .353 respectively.

Freshman Bill Freeman led the pitchers with a 4-2 record, while Lauber had a 2-2 mark, Charlie Johnson was 2-3, and Jim Turnquist 0-1.



watch out, it's hot . . . Swanson grabs pick-off throw too late

Tennis



Tennis came into its own as an intercollegiate sport at River Falls this spring as a Falcon court crew participated in six meets. As of May 13, the tennis team had battled Eau Claire and Stout once and Bethel twice, losing all four matches. Return engagements against Stout and Eau Claire rounded off the season.

The Falcon court jesters, under student coach George Johnson, turned in their top effort in the first match against, losing 4-3.

Top man for the red and white tennismen was Steve Sandburg, followed by number two man Keith Ronningen. Others on the team were Bill Hanley, Al Rosenthal, Duane Swanson, Jim Segerstrom and Roger Raguse.

CHEERLEADERS, playing a big part in the fortunes of Falcon athletic teams, were Rolfe Rodelyn, Mary Dougherty, Marie Forman, Phyllis Anderson and Sue Dorgan.



Track

As the Meletean went to press early in May, the Falcon track and field team had already completed six meets and was looking toward participation in two more such events before the end of the year. Coach Fran Polsfoot's thinclads had lost a dual meet to Carleton, finished second in a pair of triangular meets and third in another, and scored two victories in the meets through May 9. The red and white speedsters outscored St. Thomas and Eau Claire, 86 11/12 - 59 1/3 - 15 3/4 in April, then rolled up 115 1/2 points on the second Saturday in May to romp over Stout (45), Bethel (40 1/2) and Eau Claire (20).

Two records had already fallen and a third was tied. Frank Sprenger reeled off a 21.9 time in the 220 at La Crosse to break Roger Huser's old mark of 22.0. Sprenger also tied

Huser's 100 record of 10.0 the same day. Del Mottaz rounded out the day with an 11'3" pole to break the old mark of 11'0".

Sprenger was the leading point-getter through the first three-fourths of the schedule, rolling up 49 points. Huser had 47, Mottaz 43 1/3, distance-man Dan Teetzen 41 and middle-distance runner Fred Coleman 40 1/2. Next high for the Falcons was Dale Henning, who scored 20 1/2 points competing in only one event—the high jump. Others who had tallied the eight points necessary to earn a letter were: Ed Fisk and Bill Shimel (distance); Glenn Anderson, Bob Radatz and Gary Wegenbach (weights); Tom Pride, Duane Jenson and Neil Nordquist (440 and relay); Dick Zamjahn (hurdles and broad jump); and Ron Durand (pole vault).





Coleman out of the blocks



Huser takes 220 by big margin



the two mile—a long grind



he's over!



blast-off

Intramurals

The intramural athletic program claims a record of membership that cannot be matched by any other student organization or program. The distinction? Just this—over half of the male students in school participated in the intramural program during the 1959-60 school year. Under the leadership of Ben Bergsrud, intramurals at River Falls have brought the world of sport to the student body for active participation—a healthy sign in the mid-twentieth century world of passive recreation and entertainment. A total of 412 students participated in the 10 activities—many of them in two or more team or individual sports.

Two leagues were necessary to accommodate the 116 boys who turned out for intramural football in the fall. Crowned champs in a spirited tussle held on Homecoming Friday were Aunt Emma's Boys. Members of the team were Duane Teska, Ed Schlumpf, Rusty Titel, Em Crowley, Frank Gombold, Dave Olson, Bill Halverson, Roger DeSmith, John Lauber, Jim Larson, Rock Hanson, Don Swanson and Al Suezaki.

The number of participants and number of leagues doubled as basketball season rolled around. Four leagues operated with 202 participants, with the Bumble Bees emerging as champions early in March. On the title-winning squad were Jim Turnquist, Val Barrows, Gene Kirk, Falton Fisher, Bill Halverson, Gary Rhode, Olin Fimreite and Em Crowley. The annual free throw contest was won by Tom Trainer, who hit 35 of 40 shots from the foul line.

No sooner was the cage season over when the volleyball teams took over North Hall gym. Eighty-four boys took part in the volleyball action, with the Volleywags winning the team championship for the second consecutive year. Volleywaggers were Sheldon Bearrood, Curt Larson, Chuck Norelius, Dave Peterson, Ron Bosman, Bob Beeson, Gary Nelson, Jim Kahl, Jim Tostrud and Al Voelker.

All the winter intramural activity was not centered in the gym—however. Pins had been falling all winter at Collins' lanes, where 94 bowlers were felling the maples. The Free-loafers copped the title by bowling over the Grubbs, the Jokers and the Lakers in tourney play after winning the A League championship during the regulation season. Ralph Green and Phil Knuf led the way in the tournament, Green blasting his way to games of 200, 201, 203, 204 and 231. He also led the bowlers during the season with a 178 average. Other members of the champion keggers' crew were John Nelson, Gordie Nelson, Ron Losness and Curly Hanson.

The biggest turnout in River Falls history—244 students—kept two softball leagues running at full speed. The diamond champ had not been decided at Meletean press-time.

In the individual sports, JoAnn Paulson won the girls swimming title, while Jim Cuskey was named the top male aquatic star. In early May, Paul Anderson was leading the I-M tennis enthusiasts, and Sherwin Gronlund was top man in golf. As for table tennis, this year was no exception. The old reliable, Fred Kalantari, successfully defended his title against a field which totaled 130 ping pong players. Rounding out the program, 23 students had signed up to compete in an archery tourney to be held late in May.



Larry Julien at bat . . .



Fred Kalantari—
ping-pong champ



CHAMPIONSHIP INTRAMURAL BASKETBALL TEAM—the Bumble Bees



CHAMPIONSHIP INTRAMURAL FOOTBALL TEAM was Aunt Emma's Boys. Kneeling, left to right: Duane Teska, Ed Schlumpf, Rusty Titel, Em Crowley, Frank Gombold and Dave Olson. Standing: Bill Halverson, Roger DeSmith, John Lauber, Jim Larson, Rock Hanson and Don Swanson. Not pictured: Al Suezaki.